

POWDR ONE ARRIVAL  
(POWDR.POWDR1) 30JAN20

DENVER APP CON  
120.35 379.3  
APA ATIS  
120.3  
BJC ATIS  
126.25  
CFO ATIS  
119.025  
DEN D-ATIS ARR  
125.6 379.9  
KBKF ATIS\*  
119.675 259.3

GILL  
114.2 GLL  
Chan 89  
N40°30.23' W104°33.18'

NORTHERN  
COLORADO  
RGNL

GREELEY-WELD  
COUNTY

MILE HIGH  
114.7 DVV  
Chan 94  
N39°53.68' W104°37.46'

ROCKY  
MOUNTAIN  
METRO

SLOPE  
N39°47.69'  
W104°47.86'

DENVER  
INTL

DENVER  
117.9 DEN  
Chan 126  
N39°48.75' W104°39.64'

COLORADO AIR AND  
SPACE PORT

BUCKLEY  
SPACE FORCE  
BASE

HILLIE  
N39°35.05'  
W105°09.60'

CENTENNIAL

FALCON  
116.3 FGF  
Chan 110  
N39°41.41' W104°37.26'

POWDR  
N39°23.71' W105°28.89'  
VERTICAL NAVIGATION  
PLANNING INFORMATION  
TURBOJETS: Expect FL190 250K  
or as assigned by ATC.

KREMMLING  
113.8 RLG  
Chan 85

RED TABLE  
113.0 DBL  
Chan 77  
N39°26.36' W106°53.68'  
L-9, H-3

JNETT  
N39°21.14'  
W106°28.77'

COLAS  
N39°20.58'  
W105°34.19'

SKPEED  
N39°17.47'  
W105°39.44'

BASEE  
N39°12.37'  
W105°48.00'

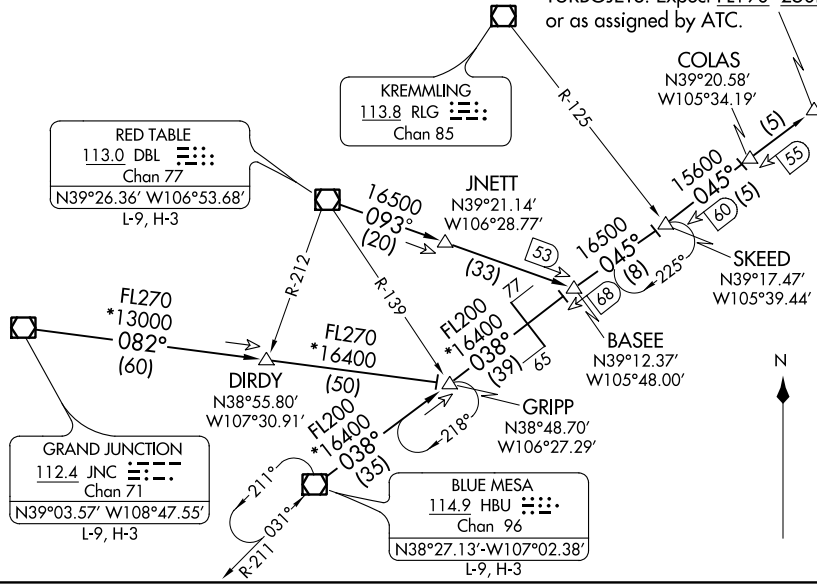
GRIPP  
N38°48.70'  
W106°27.29'

BLUE MESA  
114.9 HBU  
Chan 96  
N38°27.13' W107°02.38'  
L-9, H-3

DIRDY  
N38°55.80'  
W107°30.91'

GRAND JUNCTION  
112.4 JNC  
Chan 71  
N39°03.57' W108°47.55'  
L-9, H-3

DENVER, COLORADO



NOTE: DME required.  
NOTE: Adjacent STAR is LARKS ARRIVAL.  
NOTE: Chart not to scale.

(NARRATIVE ON FOLLOWING PAGE)

POWDR.POWDR1) 22307

AL-9077 (FAA)

DENVER, COLORADO

ARRIVAL ROUTE DESCRIPTION

BLUE MESA TRANSITION (HBU.POWDR1): From over HBU VOR/DME on HBU R-038 to GRIPP then on HBU R-038 and DVV R-225 to BASEE then on DVV R-225 to POWDR. Thence. . . .

GRAND JUNCTION TRANSITION (JNC.POWDR1): From over JNC VOR/DME on JNC R-082 to GRIPP; then on HBU R-038 and DVV R-225 to BASEE then on DVV R-225 to POWDR. Thence. . . .

RED TABLE TRANSITION (DBL.POWDR1): From over DBL VOR/DME on DBL R-093 and DVV R-225 to POWDR. Thence. . . .

. . . .from over POWDR on the DVV VORTAC R-225 to HLLIE, then on DVV VORTAC R-225 to SLOPE, then on DVV VORTAC R-225 to DVV. Expect RADAR vectors to the final approach course at or before DVV VORTAC.

SW-1, 18 MAY 2023 to 15 JUN 2023

SW-1, 18 MAY 2023 to 15 JUN 2023