

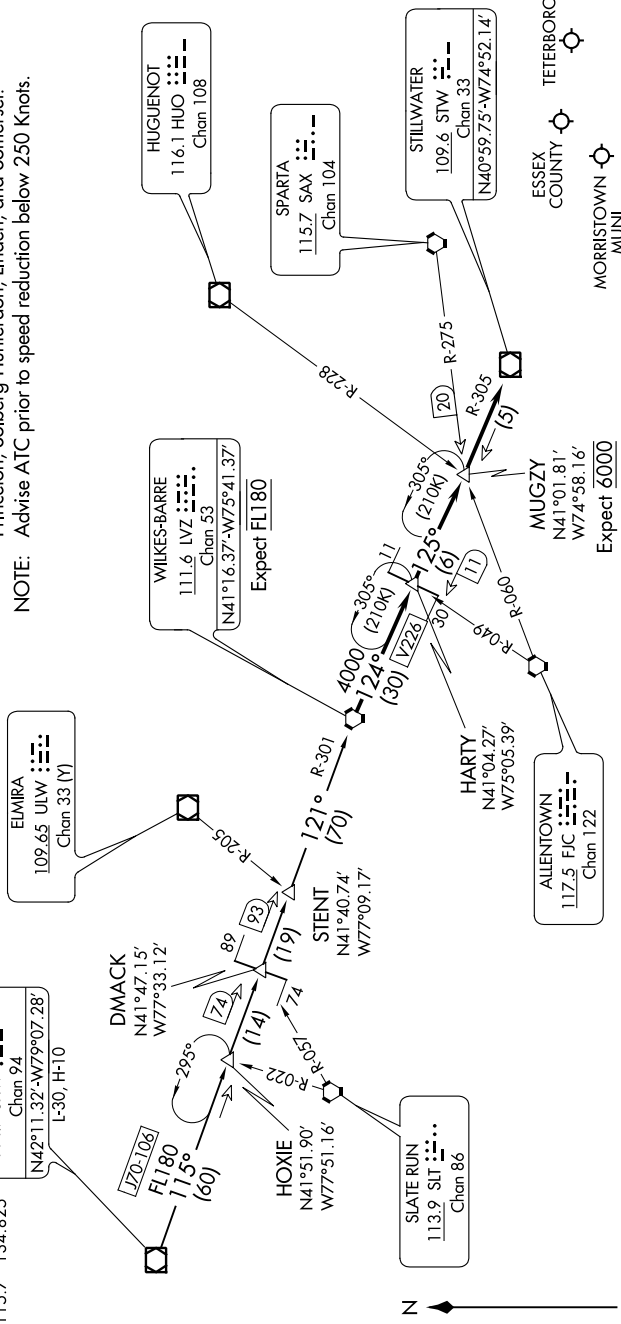
# WILKES-BARRE FOUR ARRIVAL

TETERBORO, NEW JERSEY

NE-2, 07 SEP 2023 to 05 OCT 2023

NEW YORK APP CON  
127.6 379.9  
EWR D-ATIS  
115.7 134.825

NOTE: This STAR applicable to all aircraft capable of 250 KIAS or greater landing at Teterboro, Morristown Muni, Essex County, Princeton, Solberg-Hunterdon, Linden, and Somerset.  
NOTE: Advise ATC prior to speed reduction below 250 Knots.



## ARRIVAL ROUTE DESCRIPTION

JAMESTOWN TRANSITION (JHW.LVZ4): From over JHW VOR/DME on JHW R-115 and LVZ R-301 to LVZ VORTAC. Thence . . . .

. . . . from over LVZ VORTAC, on LVZ R-124 and STW R-305 to STW VOR/DME. Expect radar vectors to final approach course.

NOTE: Chart not to scale.

# WILKES-BARRE FOUR ARRIVAL

TETERBORO, NEW JERSEY

NE-2, 07 SEP 2023 to 05 OCT 2023