

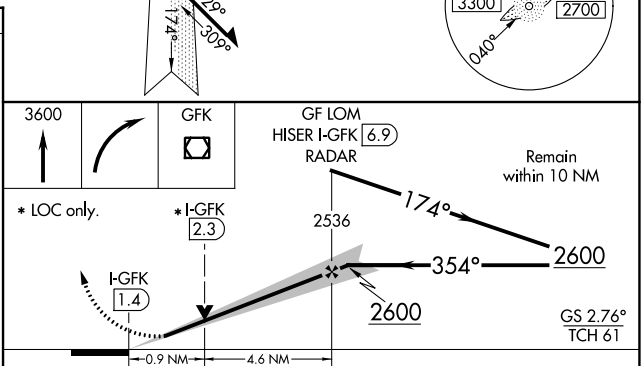
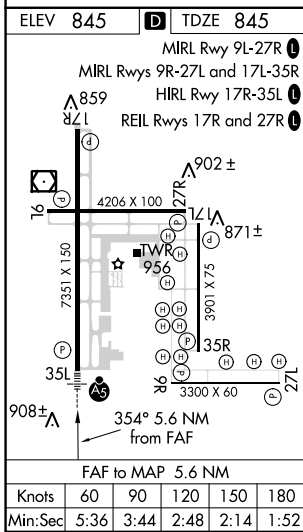
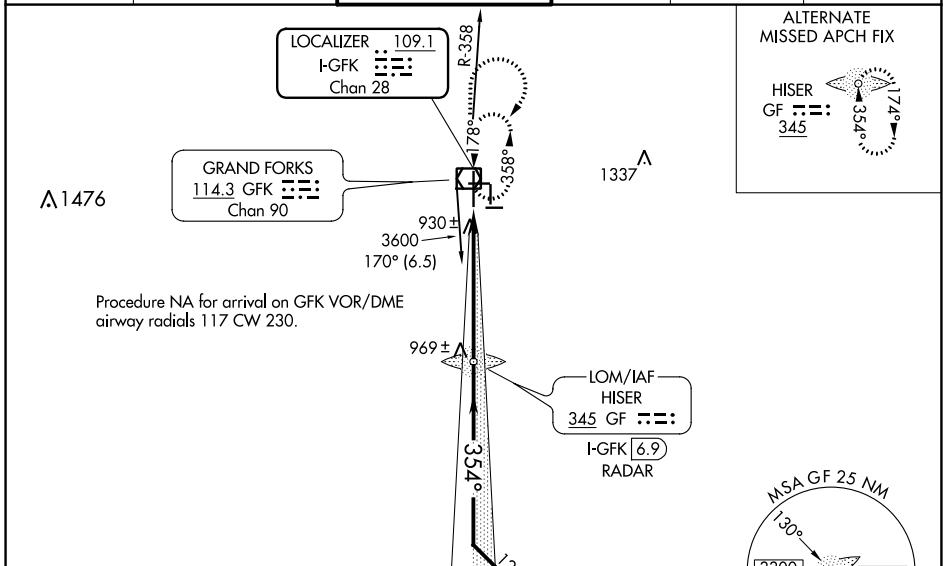
|  |                        |   |
|--|------------------------|---|
| LOC/DME I-GFK<br><b>109.1</b><br>Chan 28 | APP CRS<br><b>354°</b> | Rwy Idg <b>7351</b><br>TDZE <b>845</b><br>Apt Elev <b>845</b> |
|--|------------------------|---|

# ILS or LOC RWY 35L

GRAND FORKS INTL (GFK)

|   |  |  |   |
|---|--|--|---|
| ADF or DME or RADAR REQUIRED.   |  |  | <b>MISSED APPROACH:</b><br>Climb to 3600 then right turn direct GFK VOR/DME and hold. |
| VDP NA with Crookston altimeter setting. When local altimeter setting not received, use Crookston altimeter setting and increase DA to 1107 feet and all MDA 80 feet; increase S-LOC 35L Cats C/D/E visibility to RVR 4000 and Circling Cats C and E visibility ¼ SM. For inop ALS, increase S-ILS 35L Cat E visibility to RVR 4000 and S-LOC 35L Cat E visibility to RVR 5000. For inop ALS when using Crookston altimeter setting, increase S-ILS 35L all Cats visibility to RVR 4500 and S-LOC 35L Cat C/D/E visibility to RVR 6000. Procedure turn NA for Cat E aircraft, Radar required. |  |  |   |

|                      |   |  |                           |                            |                         |
|----------------------|---|--|---------------------------|----------------------------|-------------------------|
| ATIS<br><b>119.4</b> | GRAND FORKS APP CON *<br><b>118.1 318.1</b> | GRAND FORKS TOWER*<br><b>118.4 (CTAF) 350.35</b> | GND CON<br><b>124.575</b> | CLNC DEL<br><b>135.725</b> | UNICOM<br><b>122.95</b> |
|----------------------|---|--|---------------------------|----------------------------|-------------------------|



|           |                       |                       |                         |                       |                         |
|-----------|-----------------------|-----------------------|-------------------------|-----------------------|-------------------------|
| CATEGORY  | A                     | B                     | C                       | D                     | E                       |
| S-ILS 35L | 1045/24 200 (200-½)   |                       |                         |                       |                         |
| S-LOC 35L | 1180/24               | 335 (400-½)           | 1180/26 335 (400-½)     |                       |                         |
| CIRCLING  | 1260-1<br>415 (500-1) | 1300-1<br>455 (500-1) | 1400-1½<br>555 (600-1½) | 1400-2<br>555 (600-2) | 1520-2½<br>675 (700-2½) |

NC-1, 07 SEP 2023 to 05 OCT 2023

NC-1, 07 SEP 2023 to 05 OCT 2023