

# RNAV (GPS) RWY 27R

GRAND FORKS INTL (GFK)

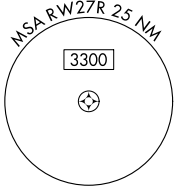
WAAS CH <b>78104</b> <b>W27A</b>	APP CRS <b>264°</b>	Rwy Idg TDZE <b>843</b> Apt Elev <b>845</b>	<b>4206</b> <b>843</b> <b>845</b>
--	------------------------	---	---

RNP APCH.

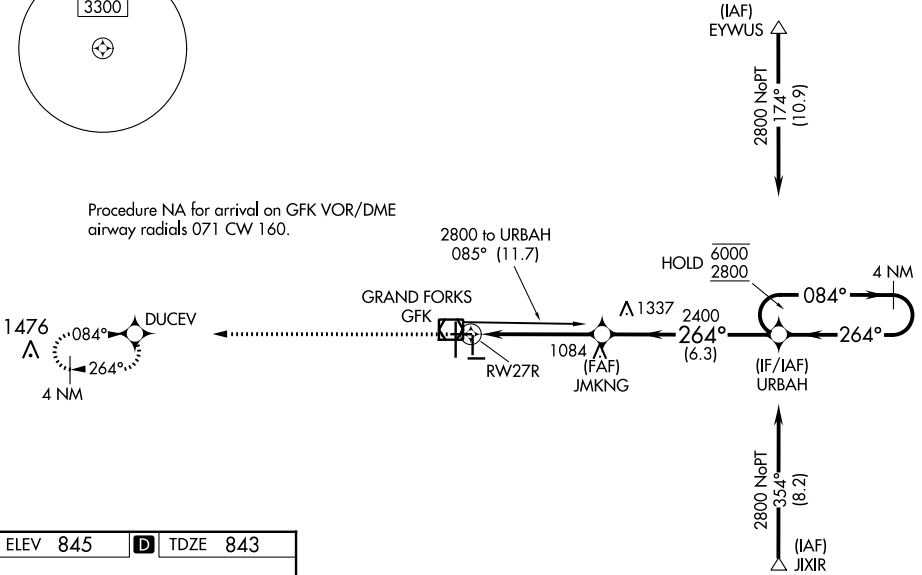
▼ VDP NA when using Crookston altimeter setting.  
 ▲ When local altimeter setting not received, use Crookston altimeter setting and increase all DA 62 feet and all MDA 80 feet. Increase LNAV and Circling Cat C and D visibility 1/2 SM.

MISSED APPROACH: Climb to 4000 direct DUCEV and hold, continue climb-in-hold to 4000.

ATIS <b>119.4</b>	GRAND FORKS APP CON ★ <b>118.1 318.1</b>	GRAND FORKS TOWER★ <b>118.4(CTAF) 350.35</b>	GND CON <b>124.575</b>	CLNC DEL <b>135.725</b>	UNICOM <b>122.95</b>
----------------------	---	---	---------------------------	----------------------------	-------------------------



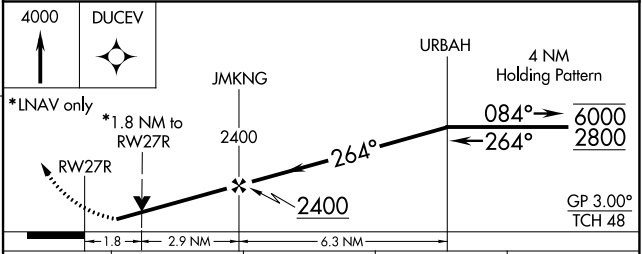
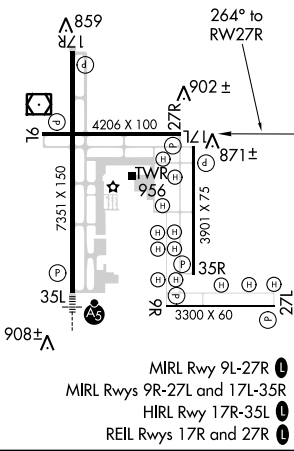
Procedure NA for arrival on GFK VOR/DME airway radials 071 CW 160.



NC-1, 07 SEP 2023 to 05 OCT 2023

NC-1, 07 SEP 2023 to 05 OCT 2023

ELEV <b>845</b>	<b>D</b>	TDZE <b>843</b>
-----------------	----------	-----------------



CATEGORY	A	B	C	D
LPV DA	1093-1 250 (300-1)			
LNAV MDA	1460-1	617 (700-1)	1460-1 <sup>3/4</sup> 617 (700-1 <sup>3/4</sup> )	1460-2 617 (700-2)
<b>C</b> CIRCLING	1460-1	615 (700-1)	1460-1 <sup>3/4</sup> 615 (700-1 <sup>3/4</sup> )	1460-2 615 (700-2)