

(PIKES2.DEN) 20030
PIKES TWO DEPARTURE

AL-5677 (FAA)

NORTHERN COLORADO RGNL (FNL)
 FORT COLLINS/LOVELAND, COLORADO

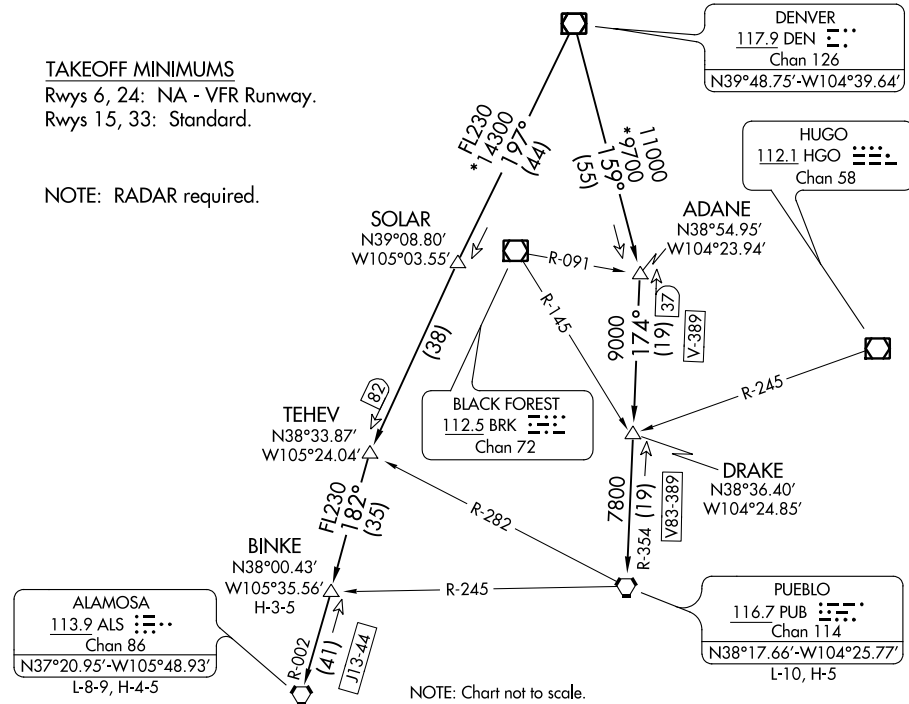
DENVER DEP CON
 134.85 251.125

**TOP ALTITUDE:
 ASSIGNED BY ATC**

TAKEOFF MINIMUMS

Rwys 6, 24: NA - VFR Runway.
 Rwys 15, 33: Standard.

NOTE: RADAR required.



DEPARTURE ROUTE DESCRIPTION

TAKEOFF RUNWAY 33: Climbing right turn to assigned altitude and heading between 350° CW 150° from DER, thence . . .

TAKEOFF RUNWAY 15: Climb to assigned altitude and heading between 180° CCW 350° from end of runway, thence . . .

. . . .RADAR vectors to assigned route. Expect filed altitude 10 minutes after departure.

LOST COMMUNICATIONS: If no transmissions are received within one minute after departure, maintain assigned heading until 7000 feet, then climb to filed altitude via direct DEN VOR/DME, thence via assigned transition. If filed altitude is above 10000 feet, cross DEN VOR/DME at or above 11000 feet.

ALAMOSA TRANSITION (PIKES2.ALS): From over DEN VOR/DME on DEN R-197 to TEHEV, then on ALS R-002 to ALS VORTAC.

BINKE TRANSITION (PIKES2.BINKE): From over DEN VOR/DME on DEN R-197 to TEHEV, then on ALS R-002 to BINKE.

PUEBLO TRANSITION (PIKES2.PUB): From over DEN VOR/DME on DEN R-159 to ADANE, then on PUB R-354 to PUB VORTAC.

PIKES TWO DEPARTURE
(PIKES2.DEN) 30JAN20

FORT COLLINS/LOVELAND, COLORADO
 NORTHERN COLORADO RGNL (FNL)

SW-1, 07 SEP 2023 to 05 OCT 2023

SW-1, 07 SEP 2023 to 05 OCT 2023