

WAAS CH 82403 W14A	APP CRS 138°	Rwy Idg TDZE Apt Elev	4650 1204 1204
--	------------------------	-----------------------------	---

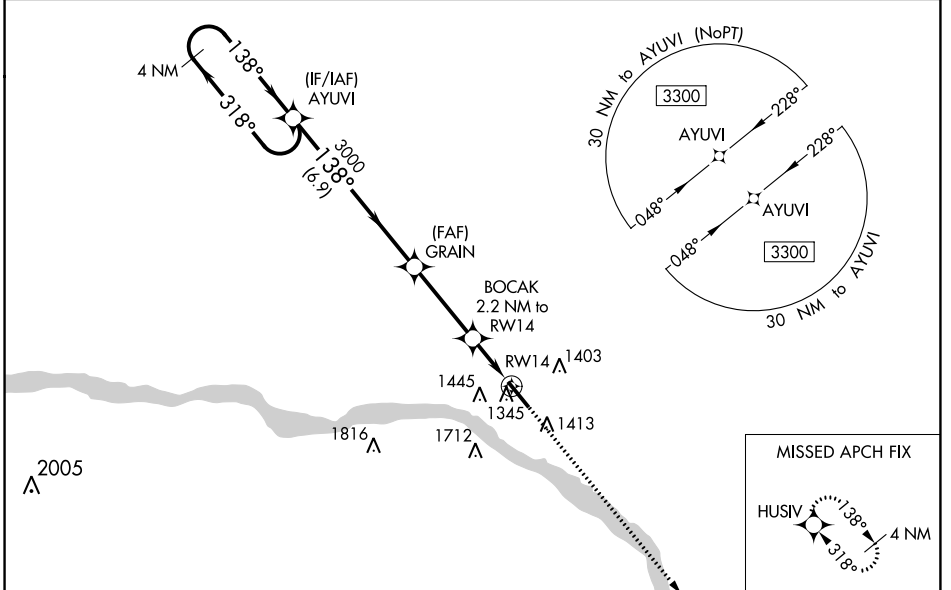
RNAV (GPS) RWY 14

FREMONT MUNI (F'ET)

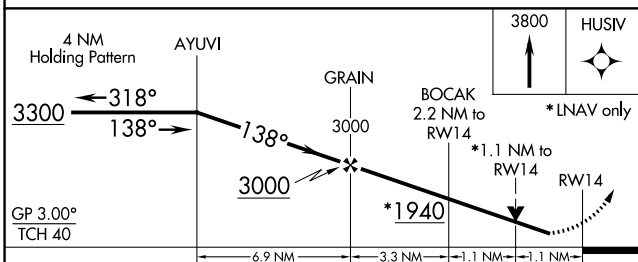
⚠ For uncompensated Baro-VNAV systems, LNAV/VNAV NA below -17°C (2°F) or above 54°C (130°F). DME/DME RNP-0.3 NA. Helicopter visibility reduction below 1 SM NA. When local altimeter setting not received, use Blair altimeter setting and increase all DA/MDA 60 feet; increase LNAV/VNAV all Cats visibility 1/8 mile, and LNAV Cat C visibility 1/4 mile. Baro-VNAV and VDP NA when using Blair altimeter setting.

MISSED APPROACH:
Climb to 3800 direct HUSIV and hold.

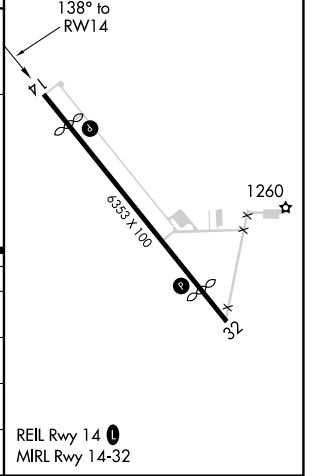
AWOS-3 121.275	OMAHA APP CON 120.1 354.05	UNICOM 122.8 (CTAF) 0
--------------------------	--------------------------------------	---------------------------------



ELEV 1204	D TDZE 1204
-----------	--------------------



CATEGORY	A	B	C	D
LPV DA	1454-1	250 (300-1)		NA
LNAV/VNAV DA	1496-1	292 (300-1)		NA
LNAV MDA	1600-1	396 (400-1)	1600-1/8 396 (400-1/8)	NA
C CIRCLING	1760-1	556 (600-1)	2020-2 1/2 816 (900-2 1/2)	NA



NC-2, 07 SEP 2023 to 05 OCT 2023

NC-2, 07 SEP 2023 to 05 OCT 2023