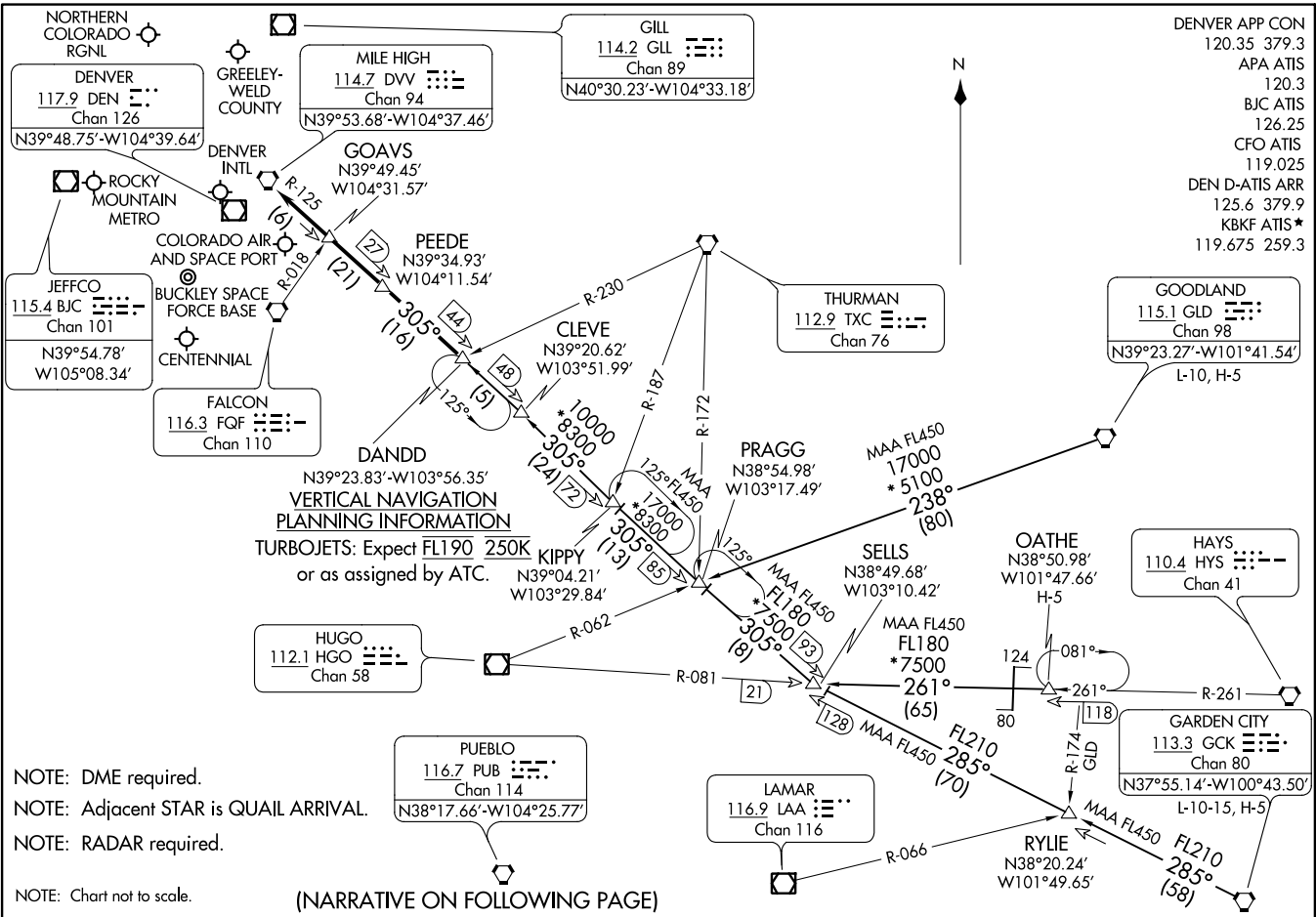


DANDD ONE ARRIVAL
(DANDD.DANDD1) 30JANZO

DENVER, COLORADO



NOTE: DME required.
 NOTE: Adjacent STAR is QUAIL ARRIVAL.
 NOTE: RADAR required.

NOTE: Chart not to scale. (NARRATIVE ON FOLLOWING PAGE)

(DANDD.DANDD1) 22307
DANDD ONE ARRIVAL

AL-9077 (FAAN)

DENVER, COLORADO

ARRIVAL ROUTE DESCRIPTION

GARDEN CITY TRANSITION (GCK.DANDD1): From over GCK VORTAC on GCK R-285 and DVV R-125 to DANDD. Thence. . . .

GOODLAND TRANSITION (GLD.DANDD1): From over GLD VORTAC on GLD R-238 and DVV R-125 to DANDD. Thence. . . .

OATHE TRANSITION (OATHE.DANDD1): From over OATHE on HYS R-261 and HGO R-081 to SELLS, then on DVV R-125 to DANDD. Thence. . . .

. . . .from over DANDD on DVV R-125 to DVV VORTAC. Expect RADAR vectors to the final approach course at or before DVV VORTAC.

SW-1, 07 SEP 2023 to 05 OCT 2023

SW-1, 07 SEP 2023 to 05 OCT 2023