

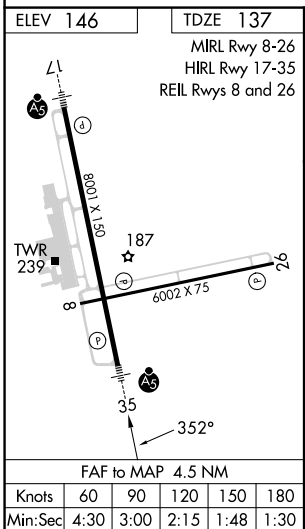
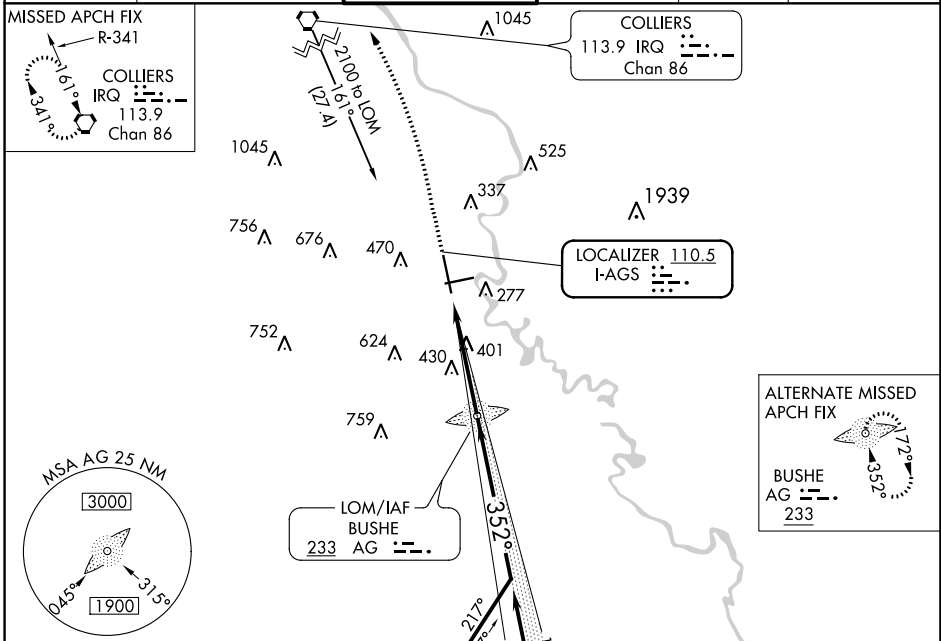
LOC I-AGS 110.5	APP CRS 352°	Rwy Idg TDZE Apt Elev	8001 137 146
---------------------------	------------------------	-----------------------------	---

ILS or LOC RWY 35

AUGUSTA RGNL AT BUSH FLD (AGS)

<p>When local altimeter setting not received, use Daniel Fld altimeter setting and increase S-ILS 35 DA to 392; increase all MDAs 60 feet and S-LOC 35 and Circling Cats C and D visibility 1/4 SM. Autopilot coupled approach NA below 940.</p>	MALSR	MISSED APPROACH: Climb to 600 then climbing left turn to 2100 direct IRQ VORTAC and hold.			
			<p>ATIS 132.75</p>	<p>AUGUSTA APP CON ★ 126.8 270.3</p>	<p>AUGUSTA TOWER ★ 118.7 (CTAF) 0 239.3</p>

<p>MISSED APCH FIX R-341</p> <p>COLLIERS IRQ 113.9 Chan 86</p>	<p>COLLIERS 113.9 IRQ Chan 86</p>	<p>LOCALIZER 110.5 I-AGS</p>	<p>ALTERNATE MISSED APCH FIX BUSHE AG 233</p>
--	---	----------------------------------	---



ELEV 146	TDZE 137	MIRL Rwy 8-26	HIRL Rwy 17-35	REIL Rws 8 and 26
<p>(IF) SHELBY R-281 3000 281° (8.8) R-281 116.7 ALD (IAF) SARDY IRQ 43.6</p>				
600	2100	IRQ	AG LOM	Remain within 10 NM
<p>VGSI and ILS glidepath not coincident (VGSI Angle 3.00/TCH 72).</p>				1648
				2000
				1700
<p>4.5 NM</p>				GS 3.00° TCH 56
CATEGORY	A	B	C	D
S-ILS 35	337/24		200 (200-1/2)	
S-LOC 35	660/24	523 (600-1/2)	660/55	523 (600-1)
<input checked="" type="checkbox"/> CIRCLING	780-1	634 (700-1)	780-1 3/4 634 (700-1 1/4)	940-2 1/2 794 (800-2 1/2)

SE-4, 30 NOV 2023 to 28 DEC 2023

SE-4, 30 NOV 2023 to 28 DEC 2023