

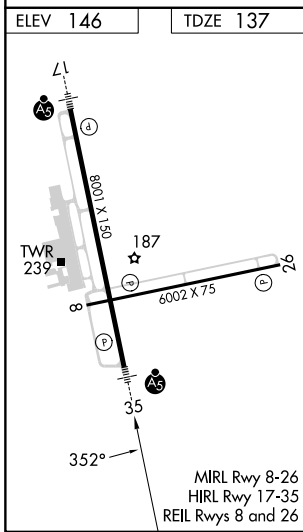
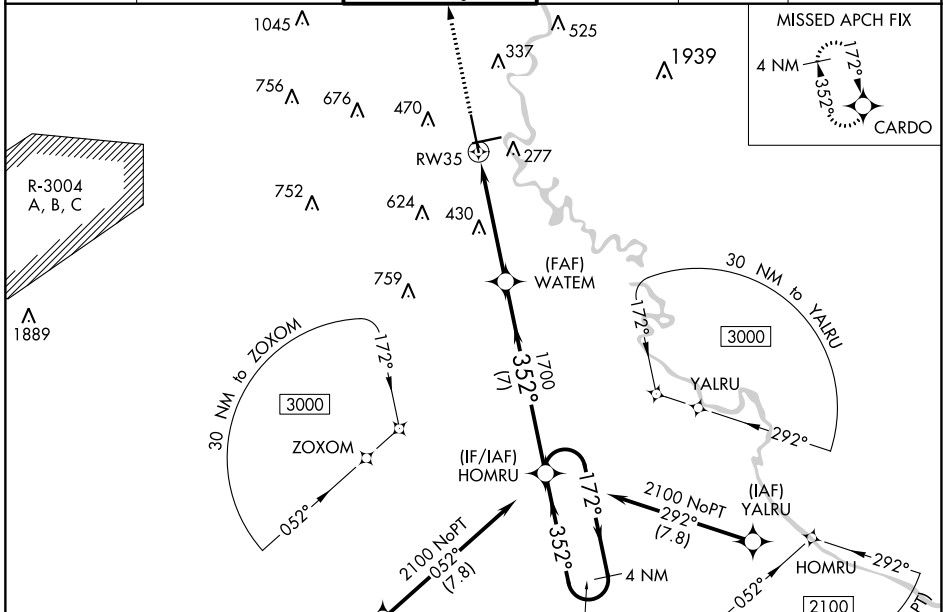
WAAS CH <b>97303</b> <b>W35A</b>	APP CRS <b>352°</b>	Rwy Idg TDZE <b>137</b> Apt Elev <b>146</b>	<b>8001</b>
--	------------------------	---	-------------

# RNAV (GPS) RWY 35

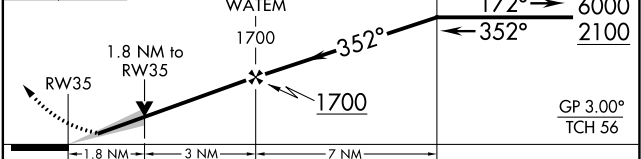
AUGUSTA RGNL AT BUSH FLD (AGS)

RNP APCH - GPS.		MALSR	MISSED APPROACH: Climb to 2400 direct CARDO and hold.
For uncompensated Baro-VNAV systems, LNAV/VNAV NA below -6°C or above 54°C.			

ATIS <b>132.75</b>	AUGUSTA APP CON ★ <b>126.8 270.3</b>	AUGUSTA TOWER ★ <b>118.7 (CTAF) 0 239.3</b>	GND CON <b>121.9 348.6</b>	CLNC DEL <b>118.65</b>	UNICOM <b>122.95</b>
-----------------------	---	--	-------------------------------	---------------------------	-------------------------



2400	CARD0	VGSI and RNAV glidepath not coincident (VGSI Angle 3.00/TCH 72).	4 NM
↑	✦		HOMRU Holding Pattern



CATEGORY	A	B	C	D
LPV DA	387/24		250 (300-½)	
LNAV/VNAV DA	668/55		531 (600-1)	
LNAV MDA	780/24	643 (700-½)	780-1⅜	643 (700-1⅜)
<input checked="" type="checkbox"/> CIRCLING	780-1	634 (700-1)	780-1⅞	940-2½ 794 (800-2½)

SE-4, 30 NOV 2023 to 28 DEC 2023

SE-4, 30 NOV 2023 to 28 DEC 2023