

WAAS CH 56419 W35A	APP CRS 353°	Rwy Idg TDZE Apt Elev	6099 1238 1258
--	------------------------	-----------------------------	---

RNAV (GPS) RWY 35

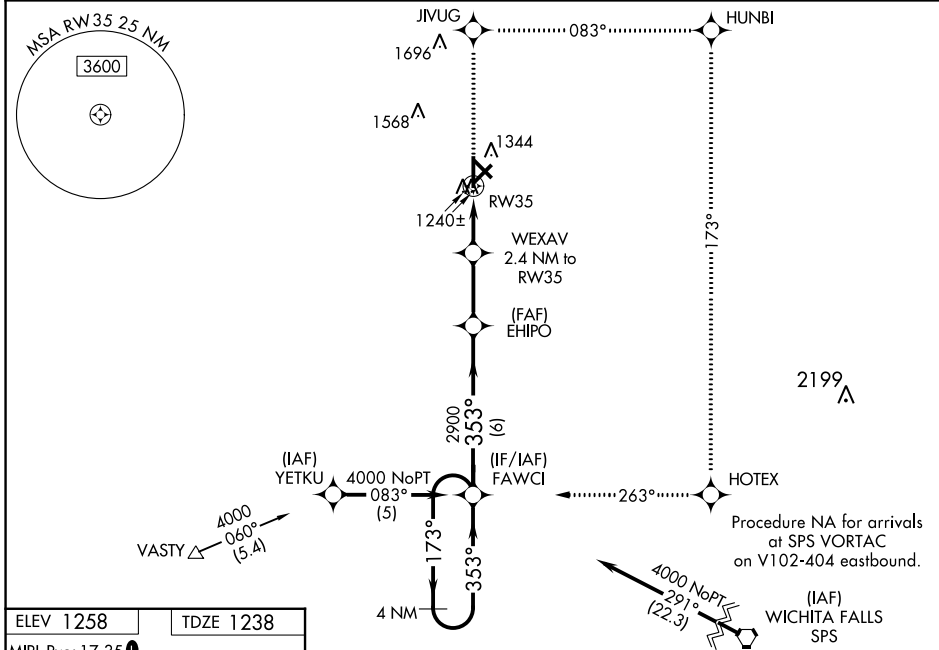
FREDERICK RGNL (F'DR)

RNP APCH-GPS.

▼ For uncompensated Baro-VNAV systems, LNAV/VNAV NA below -17°C or above 46°C.
 ▲ Baro-VNAV and VDP NA when using Vernon altimeter setting. When local altimeter setting not received, use Vernon altimeter setting: increase LPV DA to 1478 feet; increase LNAV/VNAV DA to 1540 feet; increase all MDAs 40 feet and visibility LNAV Cat C ¼ SM and Circling Cat D ¼ SM. Night landing: Rwy 3, 12, 17, 21, 30, NA.

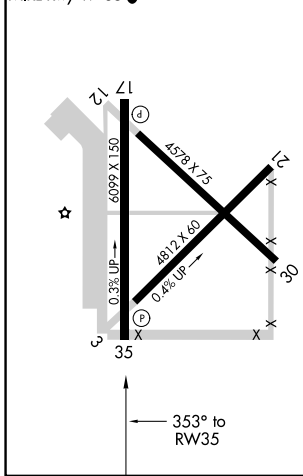
MISSED APPROACH: Climb to 4000 direct JIVUG and right turn on track 083° to HUNBI and right turn on track 173° to HOTEX and right turn on track 263° to FAWCI and hold.

ASOS 132.675	ALTUS APP CON * 125.1 353.7	UNICOM 123.05 (CTAF) 0
------------------------	---------------------------------------	----------------------------------

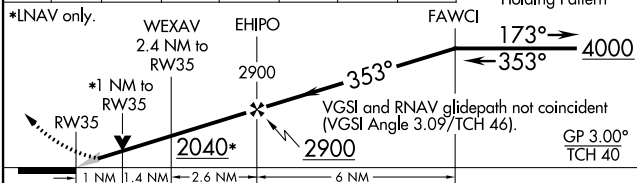


ELEV 1258	TDZE 1238
-----------	-----------

MIRL Rwy 17-35



4000	JIVUG	HUNBI	HOTEX	FAWCI
↑	tr 083°	tr 173°	tr 263°	



CATEGORY	A	B	C	D
LPV DA		1438-¾	200 (200-¾)	
LNAV/VNAV DA		1500-1	262 (300-1)	
LNAV MDA		1600-1	362 (400-1)	1600-1¼ 362 (400-1¼)
CIRCLING	1700-1 442 (500-1)	1720-1 462 (500-1)	1880-1¾ 622 (700-1¾)	1900-2 642 (700-2)

SC-1, 30 NOV 2023 to 28 DEC 2023

SC-1, 30 NOV 2023 to 28 DEC 2023