

CHARLOTTE APP CON  
125.35 257.2  
CLT D-ATIS ARR  
121.15

(JALIT.LINN3) 22307  
LINN THREE ARRIVAL

AL-78 (FAA)

CHARLOTTE, NORTH CAROLINA

NOTE: RADAR required.  
NOTE: VXV transition for turbojet aircraft only.  
NOTE: HMV and SOT transitions for turboprop/prop aircraft only.

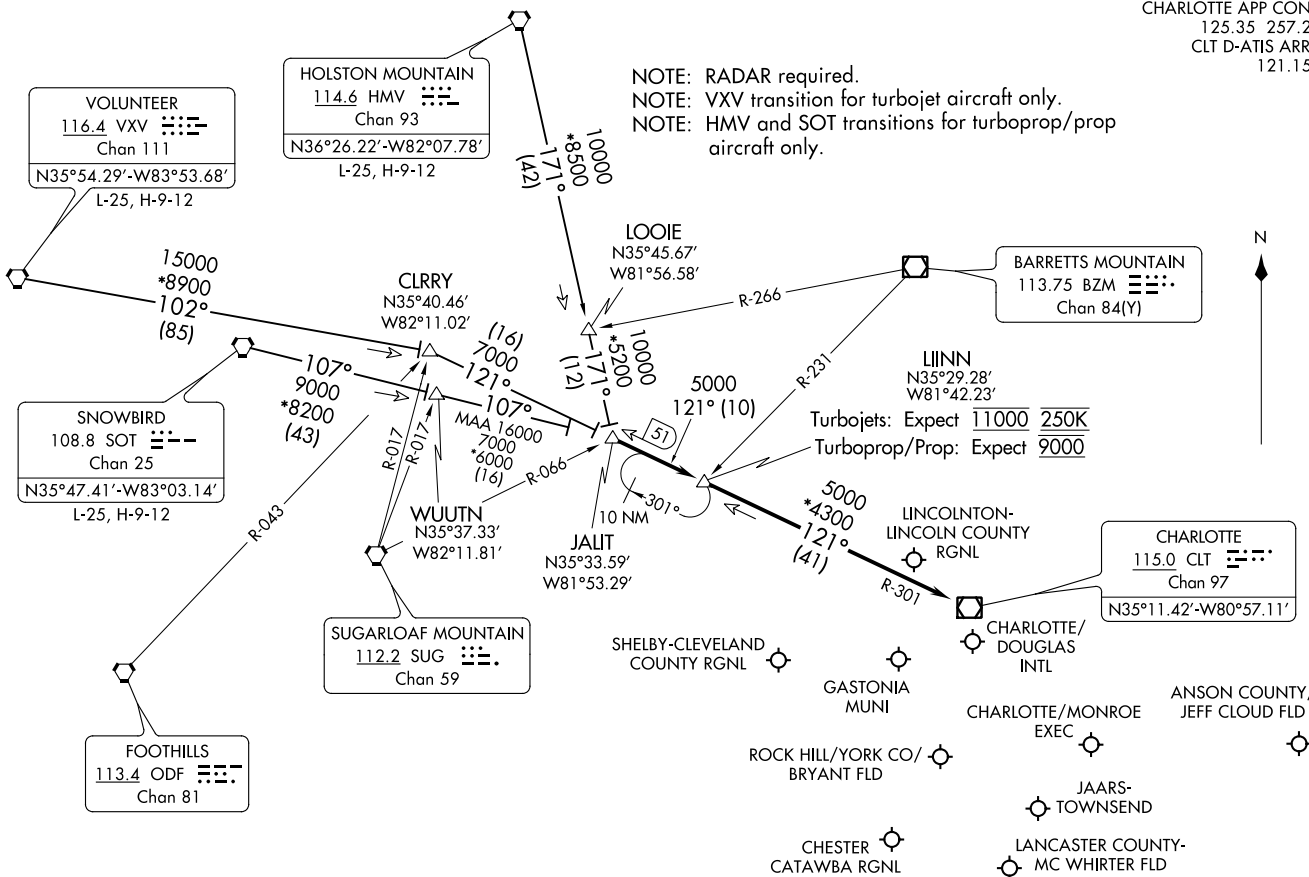


(NARRATIVE ON FOLLOWING PAGE)

NOTE: Chart not to scale.

LINN THREE ARRIVAL  
(JALIT.LINN3) 08NOV18

CHARLOTTE, NORTH CAROLINA



ARRIVAL ROUTE DESCRIPTION

HOLSTON MOUNTAIN TRANSITION (HMV.LIINN3): From over HMV VORTAC on HMV R-171 to JALIT. Thence . . . .

SNOWBIRD TRANSITION (SOT.LIINN3): From over SOT VORTAC on SOT R-107 to JALIT. Thence . . . .

VOLUNTEER TRANSITION (VXV.LIINN3): From over VXV VORTAC on VXV R-102 to CLRRY, then on CLT R-301 to JALIT. Thence . . . .

. . . . from JALIT on CLT R-301 to LIINN, then on CLT R-301 to CLT VOR/DME. Expect RADAR vectors to destination airport or final approach course prior to CLT VOR/DME.

SE-2, 30 NOV 2023 to 28 DEC 2023

SE-2, 30 NOV 2023 to 28 DEC 2023