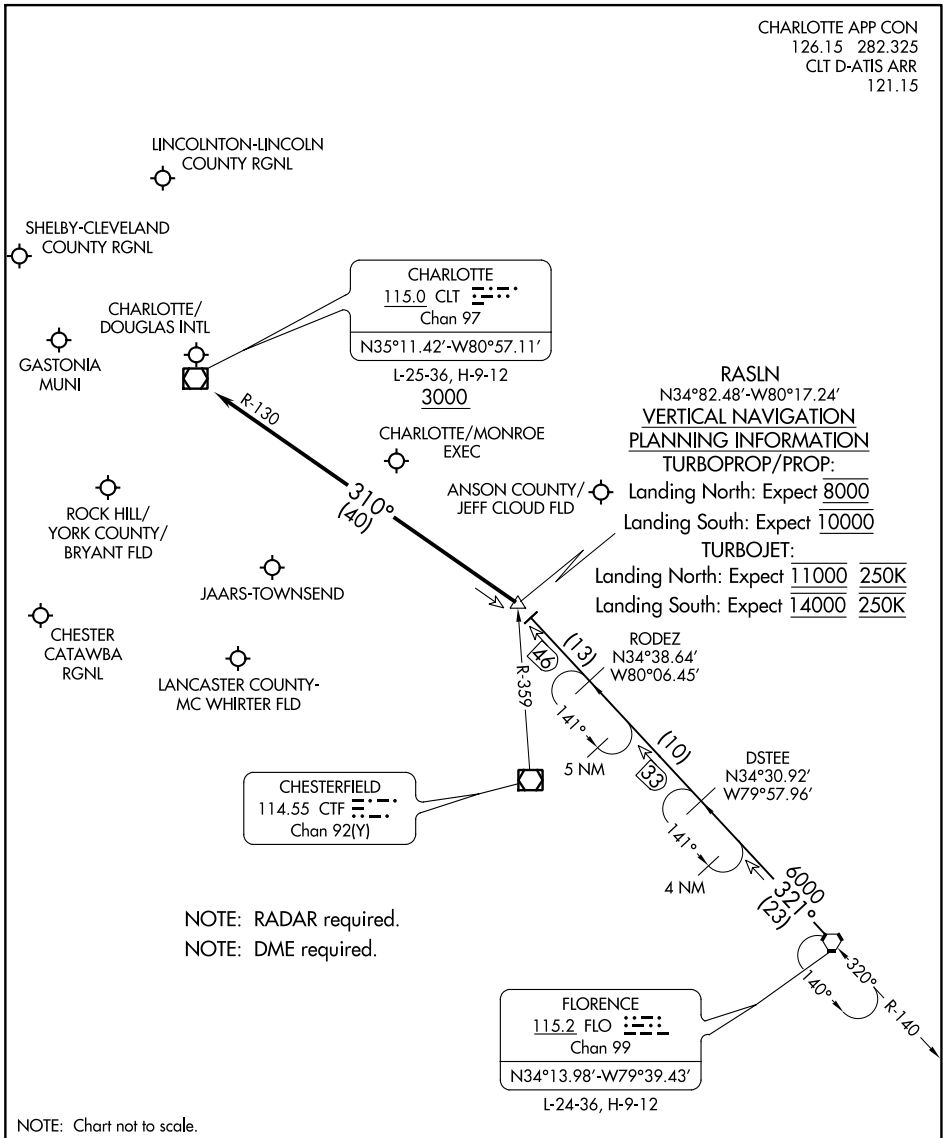


RASLN THREE ARRIVAL

CHARLOTTE, NORTH CAROLINA

CHARLOTTE APP CON
126.15 282.325
CLT D-ATIS ARR
121.15



SE-2, 30 NOV 2023 to 28 DEC 2023

SE-2, 30 NOV 2023 to 28 DEC 2023

NOTE: RADAR required.
NOTE: DME required.

NOTE: Chart not to scale.

ARRIVAL ROUTE DESCRIPTION

FLORENCE TRANSITION (FLO.RASLN3): From over FLO VORTAC on FLO R-321 to RASLN INT. Thence

. . . . from RASLN on CLT R-130 to cross CLT VOR/DME at or above 3000. Expect RADAR vectors to destination airport or final approach course prior to CLT VOR/DME.

RASLN THREE ARRIVAL

(RASLN.RASLN3) 17AUG17

CHARLOTTE, NORTH CAROLINA