

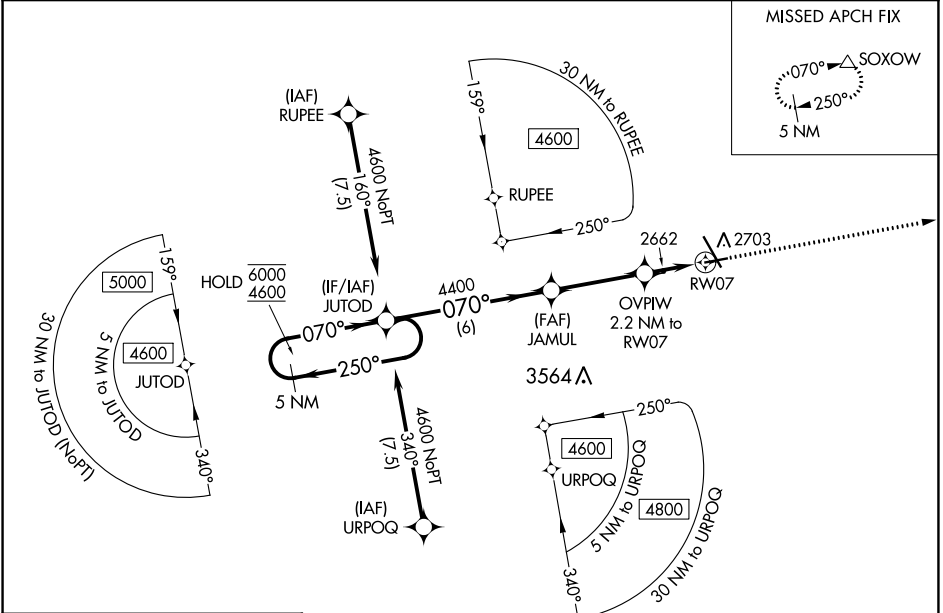
WAAS CH <b>90544</b> <b>W07A</b>	APP CRS <b>070°</b>	Rwy ldg <b>4700</b> TDZE <b>2583</b> Apt Elev <b>2592</b>
--	------------------------	---

# RNAV (GPS) RWY 7

DICKINSON/THEODORE ROOSEVELT RGNL (DIK)

RNP APCH - GPS.	MISSED APPROACH: Climb to 4600 direct SOXOW and hold.
<p><b>▼</b> Rwy 7 helicopter visibility reduction below 3/4 SM NA.</p> <p><b>▲</b> For uncompensated Baro-VNAV systems, LNAV/VNAV NA below -26°C or above 54°C.</p>	

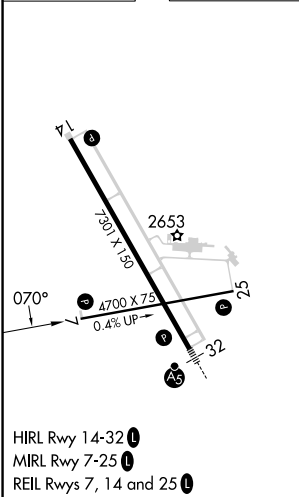
ASOS <b>118.375</b>	MINNEAPOLIS CENTER <b>124.25 236.825</b>	UNICOM <b>123.0 (CTAF) 0</b>
------------------------	---	---------------------------------



NC-1, 30 NOV 2023 to 28 DEC 2023

NC-1, 30 NOV 2023 to 28 DEC 2023

ELEV <b>2592</b>	<b>D</b>	TDZE <b>2583</b>
------------------	----------	------------------



VGSI and RNAV glidepath not coincident (VGSI Angle 3.00/TCH 28).				4600	SOXOW
5 NM Holding Pattern				↑	△
GP 3.00° TCH 45					
6000 ← 250° 4600 → 070°					
4400 → 070°					
3320 → 070°					
6 NM      3.4 NM      1.2 NM      1 NM					
CATEGORY	A	B	C	D	
LPV DA	2833-1		250 (300-1)		
LNAV/VNAV DA	2833-1		250 (300-1)		
LNAV MDA	2920-1		337 (400-1)		
CIRCLING	3060-1	468 (500-1)	3120-1½ 528 (600-1½)	3200-2 608 (700-2)	

# RNAV (GPS) RWY 7