

VORTAC DIK <b>112.9</b> Chan <b>76</b>	APP CRS <b>183°</b>	Rwy ldg TDZE Apt Elev <b>2592</b>	<b>N/A</b> <b>N/A</b>
----------------------------------------------	------------------------	--------------------------------------------	--------------------------

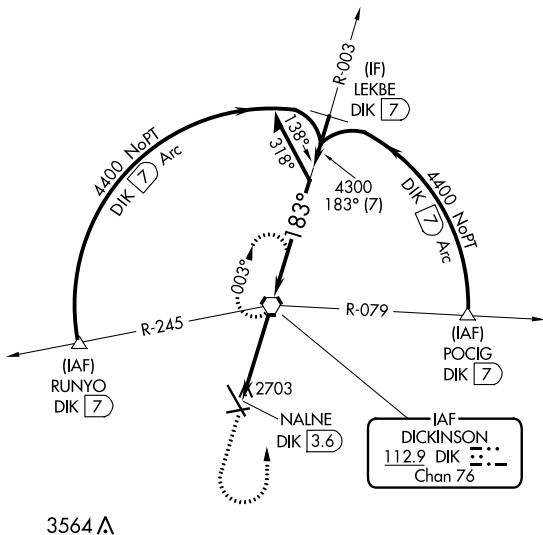
**VOR-A**

DICKINSON/THEODORE ROOSEVELT RGNL (DIK)

**⚠** When local altimeter setting not received, use Bowman altimeter setting and increase all MDAs 280 feet, increase Circling Cat C visibility 3/4 SM, Cat D visibility 1 SM.

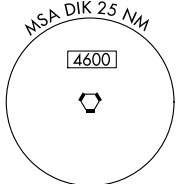
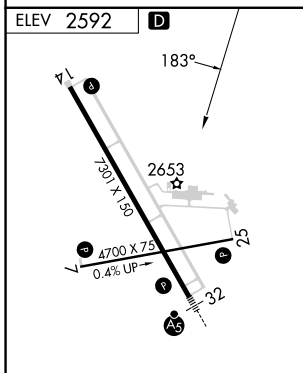
MISSED APPROACH: Climb to 4600 then turn left direct DIK VORTAC and hold.

ASOS <b>118.375</b>	MINNEAPOLIS CENTER <b>124.25 236.825</b>	UNICOM <b>123.0 (CTAF) 0</b>
------------------------	---------------------------------------------	---------------------------------



NC-1, 30 NOV 2023 to 28 DEC 2023

NC-1, 30 NOV 2023 to 28 DEC 2023

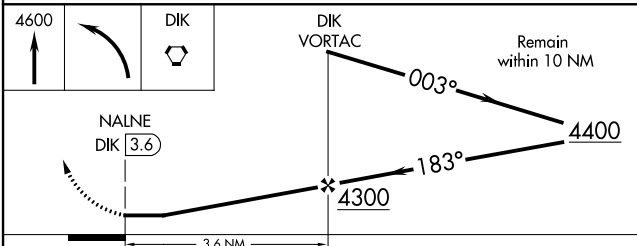


HIRL Rwy 14-32 **1**

MIRL Rwy 7-25 **1**

REIL Rws 7, 14 and 25 **1**

FAF to MAP 3.6 NM					
Knots	60	90	120	150	180
Min:Sec	3:36	2:24	1:48	1:26	1:12



CATEGORY	A	B	C	D
<b>C</b> CIRCLING	3080-1 488 (500-1)	3100-1 508 (600-1)	3120-1½ 528 (600-1½)	3220-2 628 (700-2)