

LOC/DME I-LLG <b>109.55</b> Chan 32(Y)	APP CRS <b>054°</b>	Rwy Idg TDZE <b>916</b> Apt Elev <b>926</b>	<b>9000</b>
--	------------------------	---	-------------

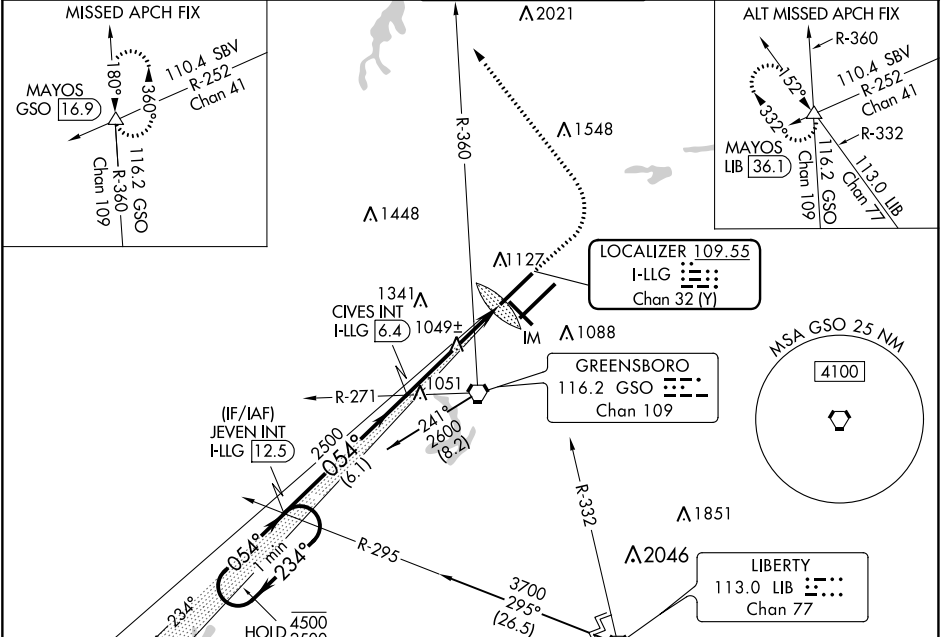
# ILS or LOC RWY 5L

PIEDMONT TRIAD INTL (GSO)

DME or RADAR required for procedure entry at LIB VORTAC. ALSF-2

**MISSED APPROACH:** Climb to 1400 then climbing left turn to 3100 on heading 330° and GSO VORTAC R-360 to MAYOS INT/GSO 16.9 DME and hold.

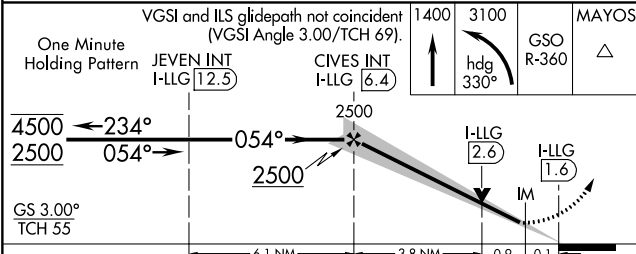
D-ATIS <b>128.55</b>	GREENSBORO APP CON <b>124.35 269.225</b> <b>126.6 327.075</b> (050°-249°)	GREENSBORO TOWER <b>119.1 290.325</b>	GND CON <b>121.9 348.6</b>	CLNC DEL <b>121.75</b>
-------------------------	--	--	-------------------------------	---------------------------



One Minute Holding Pattern

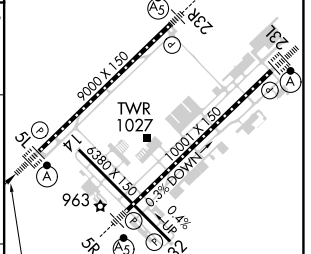
VEVSI and ILS glidepath not coincident (VEVSI Angle 3.00/TCH 69).

1400 3100 GSO MAYOS  
↑ hdg R-360 △  
330°



ELEV 926 **D** TDZE 916

TDZ/CL Rwy 5L, 23R and 23L  
REIL Rwy 32  
HIRL Rwy 14-32, 5R-23L and 5L-23R



CATEGORY	A	B	C	D
S-ILS 5L	1116/18		200 (200-½)	
S-LOC 5L	1300/24 384 (400-½)		1300/35 384 (400-¾)	
<b>C</b> CIRCLING	1440-1 514 (600-1)		1700-2¼ 774 (800-2¼) 1700-2½ 774 (800-2½)	

FAF to MAP 4.7 NM					
Knots	60	90	120	150	180
Min:Sec	4:42	3:08	2:21	1:53	1:34

SE-2, 30 NOV 2023 to 28 DEC 2023

SE-2, 30 NOV 2023 to 28 DEC 2023