

LOC/DME I-GFN 111.15 Chan 48 (Y)	APP CRS 325°	Rwy Idg TDZE Apt Elev 6380 902 926
---	------------------------	--

ILS Y or LOC Y RWY 32

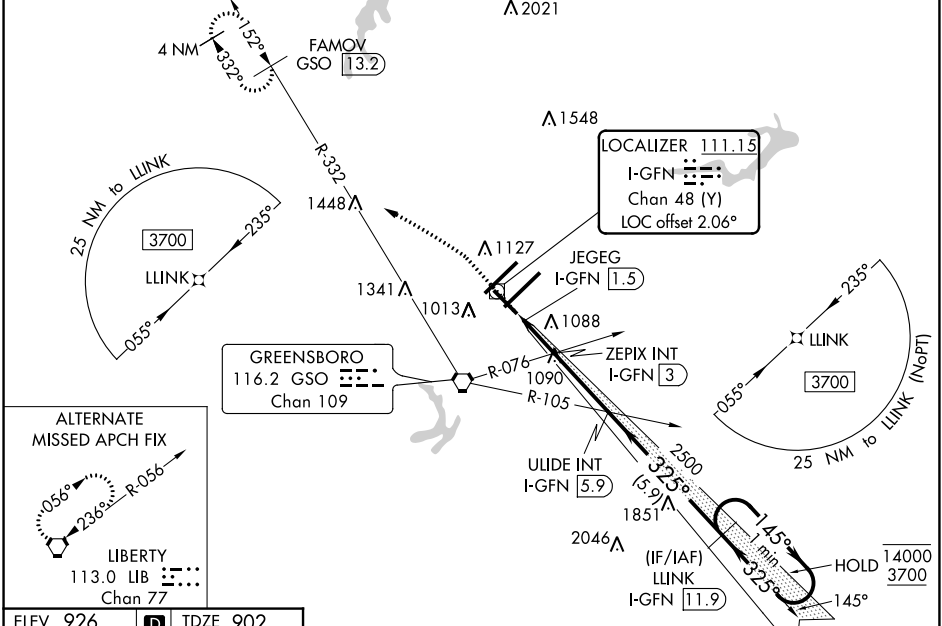
PIEDMONT TRIAD INTL (GSO)

RNAV 1-GPS or RADAR required for procedure entry.
DME required.

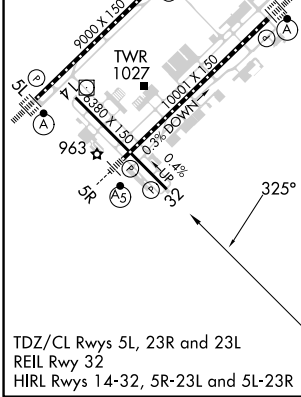
▼ Rwy 32 helicopter visibility reduction below ¾ SM NA.

MISSED APPROACH: Climb to 1400 then climbing left turn to 3700 on heading 307° and GSO VORTAC R-332 to FAMOV/GSO 13.2 DME and hold.

D-ATIS 128.55	GREENSBORO APP CON 124.35 269.225 (250°-049°) 126.6 327.075 (050°-249°)	GREENSBORO TOWER 119.1 290.325	GND CON 121.9 348.6	CLNC DEL 121.75
-------------------------	---	--	-------------------------------	---------------------------



ELEV 926	D	TDZE 902
----------	----------	----------



1400	3700	GSO R-332	FAMOV GSO 13.2	ULIDE INT I-GFN 5.9	LLINK I-GFN 11.9	One Minute Holding Pattern
1400	3700			2500	3700	4000
		JEGEG I-GFN 1.5	ZEPIX INT I-GFN 3	2500	3700	4000
		1600	1600	2500	3700	4000
		0.4	1 NM	0.6 NM	2.9 NM	5.9 NM
CATEGORY	A		B		C	
S-ILS 32	1152-3/4		250 (300-3/4)			
S-LOC 32	1400-1	498 (500-1)	1400-13/8		498 (500-13/8)	
C CIRCLING	1440-1	514 (600-1)	1700-2 1/4		1700-2 1/2	1700-2 1/2
			774 (800-2 1/4)		774 (800-2 1/2)	

SE-2, 30 NOV 2023 to 28 DEC 2023

SE-2, 30 NOV 2023 to 28 DEC 2023