

QUAKER EIGHT DEPARTURE

D-ATIS 128.55
 CLNC DEL 121.75
 GND CON
 121.9 348.6
 GREENSBORO TOWER
 119.1 290.325
 GREENSBORO DEP CON
 124.35 269.225 (250°-049°)
 126.6 327.075 (050°-249°)

LYNCHBURG
 109.2 LYH
 Chan 29
 N37°15.27' - W79°14.18'
 L-26-36, H-10-12

RADAR required.
 RICHMOND Transition requires DME.

SOUTH BOSTON
 110.4 SBV
 Chan 41
 N36°40.50' - W79°00.87'
 L-26-36, H-12

ROANOKE
 109.4 ROA
 Chan 31
 N37° 20.61'
 W80° 04.22'
 L-26, H-10-12

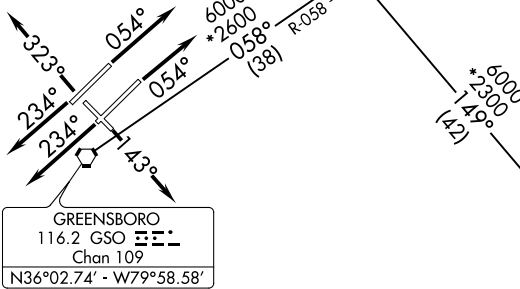
RICHMOND
 114.1 RIC
 Chan 88
 N37°30.14'
 W77°19.22'
 L-34-36, H-10-12

CREWE
 N37°01.38'
 W78°13.06'

**TOP ALTITUDE:
 ASSIGNED BY ATC**

JEANY
 N36°24.33'
 W79°20.27'

TAKEOFF MINIMUMS
 Rwy 5L/R, 14, 23L/R, 32: Standard.



NOTE: Chart not to scale.

DEPARTURE ROUTE DESCRIPTION

TAKEOFF RUNWAYS 5L/R: Climb on heading 054°, thence. . . .

TAKEOFF RUNWAY 14: Climb on heading 143°, thence. . . .

TAKEOFF RUNWAYS 23L/R: Climb on heading 234°, thence. . . .

TAKEOFF RUNWAY 32: Climb on heading 323°, thence. . . .

. . . .maintain altitude assigned by ATC. RADAR vectors will be provided to intercept assigned radial associated with the issued transition, or if no transition assigned, RADAR vectors will be provided to the appropriate fix. Expect requested altitude/flight level 10 minutes after departure.

LYNCHBURG TRANSITION (QUAK8.LYH): From over GSO VORTAC on GSO R-058 to JEANY then on LYH R-191 to LYH VOR/DME.

RALEIGH/DURHAM TRANSITION (QUAK8.RDU): From over GSO VORTAC on GSO R-058 to JEANY then on RDU R-329 to RDU VORTAC.

RICHMOND TRANSITION (QUAK8.RIC): From over GSO VORTAC on GSO R-058 to JEANY then on GSO R-058 and RIC R-246 to CREWE then on RIC R-246 to RIC VORTAC.

ROANOKE TRANSITION (QUAK8.ROA): From over GSO VORTAC on GSO R-058 to JEANY then on ROA R-152 to ROA VOR/DME.

SOUTH BOSTON TRANSITION (QUAK8.SBV): From over GSO VORTAC on GSO R-058 to JEANY then on SBV R-229 to SBV VORTAC.