

WAAS CH 93919 W14A	APP CRS 143°	Rwy Idg TDZE Apt Elev	6380 925 926
--	------------------------	-----------------------------	---

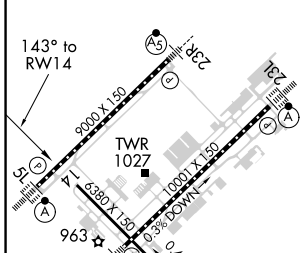
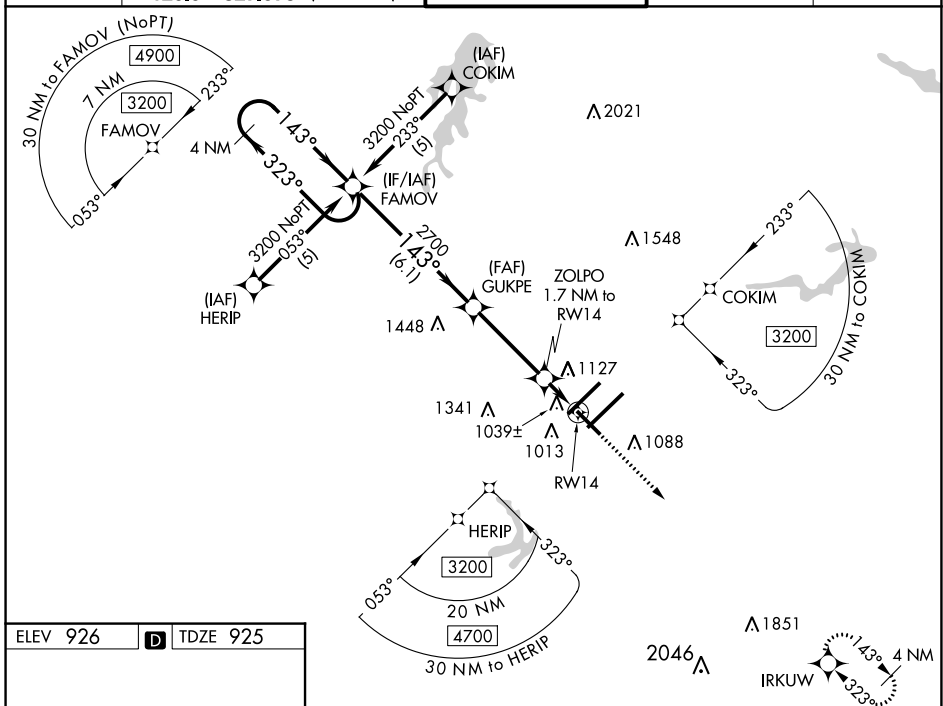
RNAV (GPS) RWY 14

PIEDMONT TRIAD INTL (GSO)

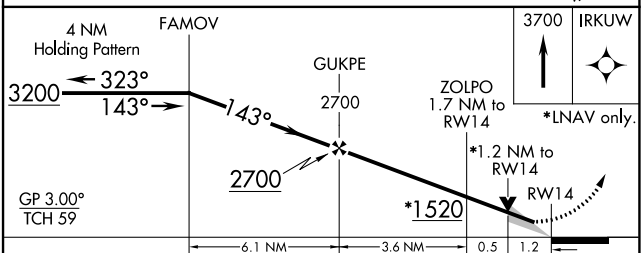
⚠ Baro-VNAV NA when using Winston-Salem altimeter setting. For uncompensated Baro-VNAV systems, LNAV/VNAV NA below -16°C (4°F) or above 47°C (116°F). DME/DME RNP-0.3 NA. When local altimeter setting not received, use Winston-Salem altimeter setting: increase LPV DA to 1163 feet; increase LNAV/VNAV DA to 1461 feet; increase all MDAs 40 feet and visibility Cats C and D ¼ SM. VDP NA with Winston-Salem altimeter setting.

MISSED APPROACH:
Climb to 3700 direct IRKUW and hold.

D-ATIS 128.55	GREENSBORO APP CON 124.35 269.225 126.6 327.075 (050°-049°)	GREENSBORO TOWER 119.1 290.325	GND CON 121.9 348.6	CLNC DEL 121.75
-------------------------	---	--	-------------------------------	---------------------------



TDZ/CL Rws 5L, 23R and 23L
REIL Rwy 32
HIRL Rws 14-32, 5R-23L and 5L-23R



CATEGORY	A	B	C	D
LPV DA		1125- ³ / ₄	200 (200- ³ / ₄)	
LNAV/VNAV DA		1423-1 ³ / ₄	498 (500-1 ³ / ₄)	
LNAV MDA	1360-1	435 (500-1)	1360-1 ¹ / ₄ 435 (500-1 ¹ / ₄)	1360-1 ¹ / ₂ 435 (500-1 ¹ / ₂)
C CIRCLING	1440-1	514 (600-1)	1700-2 ¹ / ₄ 774 (800-2 ¹ / ₄)	1700-2 ¹ / ₂ 774 (800-2 ¹ / ₂)

SE-2, 30 NOV 2023 to 28 DEC 2023

SE-2, 30 NOV 2023 to 28 DEC 2023