


WAAS CH 90315 W23B	APP CRS 234°	Rwy Idg TDZE 864 Apt Elev 926	9000
--	------------------------	---	-------------

RNAV (GPS) RWY 23R

PIEDMONT TRIAD INTL (GSO)

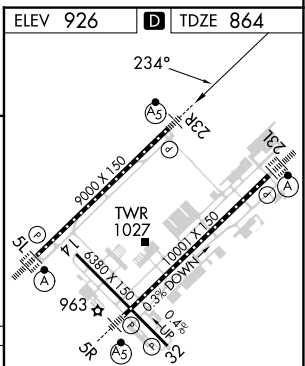
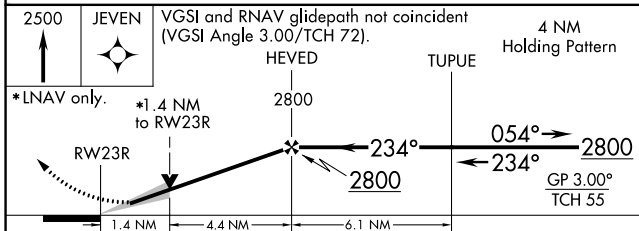
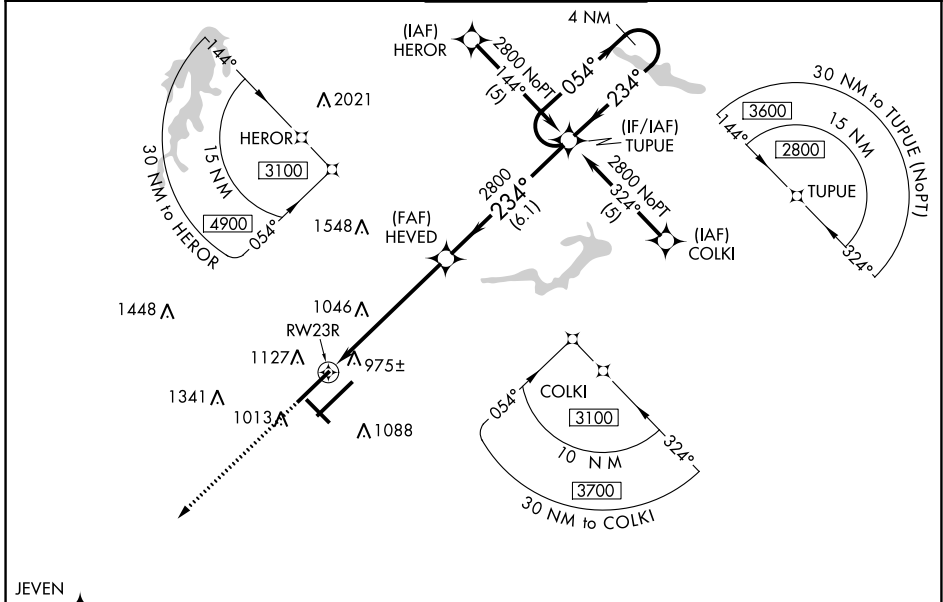
▼ For uncompensated Baro-VNAV systems, LNAV/VNAV NA below -16°C (4°F) or above 47°C (116°F). DME/DME RNP-0.3 NA. Simultaneous approach authorized with ILS or LOC RWY 23L, ILS RWY 23L CAT (II). LNAV procedure NA during simultaneous operations. Use of FD or AP providing RNAV track guidance required during simultaneous operations.

MALSR



MISSED APPROACH: Climb to 2500 direct JEVEN and hold.

D-ATIS 128.55	GREENSBORO APP CON 124.35 269.225 126.6 327.075 (050°-249°)	GREENSBORO TOWER 119.1 290.325	GND CON 121.9 348.6	CLNC DEL 121.75
-------------------------	---	--	-------------------------------	---------------------------



CATEGORY	A	B	C	D
LPV DA	1064/18		200 (200-½)	
LNAV/VNAV DA	1414-1½		550 (500-1½)	
LNAV MDA	1340/24 476 (500-½)		1340/50 476 (500-1)	
C CIRCLING	1440-1 514 (600-1)		1700-2¼ 774 (800-2¼)	

TDZ/CL Rwy 5L, 23R and 23L
REIL Rwy 32
HIRL Rwy 14-32, 5R-23L and 5L-23R

SE-2, 30 NOV 2023 to 28 DEC 2023

SE-2, 30 NOV 2023 to 28 DEC 2023