

WAAS CH 61035 W32A	APP CRS 323°	Rwy Idg 6380 TDZE 902 Apt Elev 926
--	------------------------	---

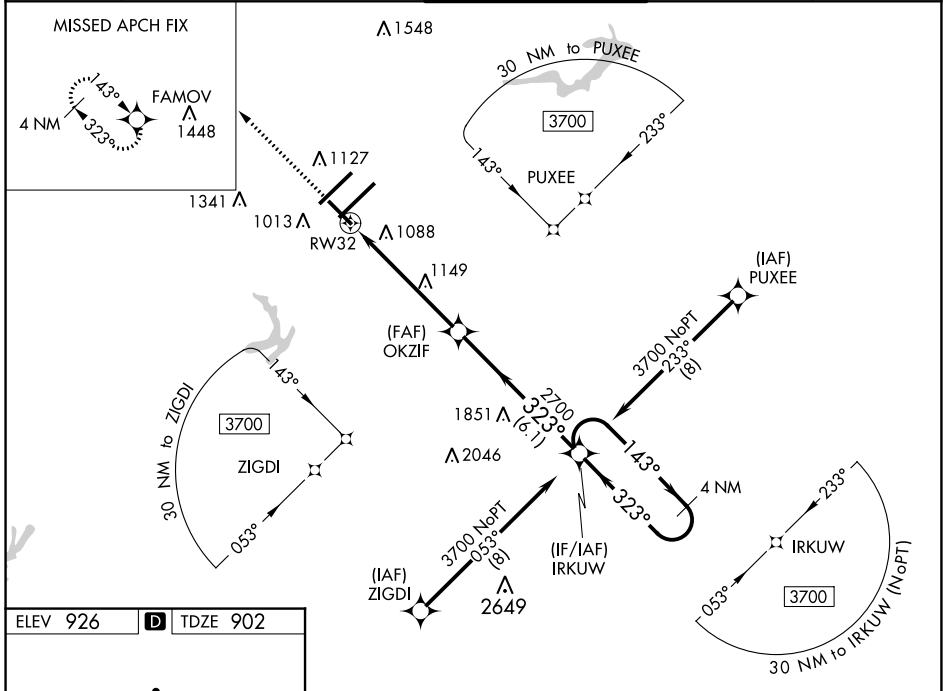
RNAV (GPS) RWY 32

PIEDMONT TRIAD INTL (GSO)

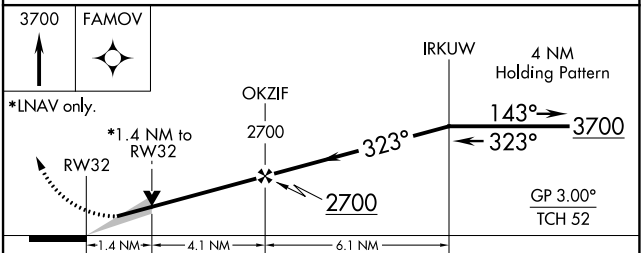
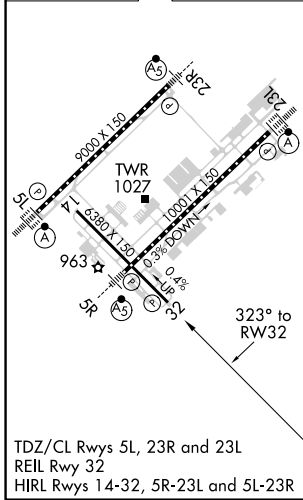
⚠ For uncompensated Baro-VNAV systems, LNAV/VNAV NA below -10°C (14°F) or above 54°C (130°F). DME/DME RNP-0.3 NA. Baro-VNAV and VDP NA when using Smith Reynolds altimeter setting. When local altimeter setting is not received use Smith Reynolds altimeter setting: increase all DA 38 feet and all MDA 40 feet, increase LNAV/VNAV all Cats and LNAV Cats C/D visibilities 1/8 mile, increase Circling Cats C/D visibility 1/4 mile.

MISSED APPROACH:
Climb to 3700 direct
FAMOV and hold.

D-ATIS 128.55	GREENSBORO APP CON 124.35 269.225 126.6 327.075 (250°-049°) (050°-249°)	GREENSBORO TOWER 119.1 290.325	GND CON 121.9 348.6	CLNC DEL 121.75
-------------------------	---	--	-------------------------------	---------------------------



ELEV 926	D TDZE 902
----------	-------------------



CATEGORY	A	B	C	D
LPV DA		1102-3/4	200 (200-3/4)	
LNAV/VNAV DA		1419-1 3/4	517 (500-1 3/4)	
LNAV MDA	1400-1	498 (500-1)	1400-1 3/8	498 (500-1 3/8)
C CIRCLING	1440-1	514 (600-1)	1700-2 1/4 774 (800-2 1/4)	1700-2 1/2 774 (800-2 1/2)

SE-2, 30 NOV 2023 to 28 DEC 2023

SE-2, 30 NOV 2023 to 28 DEC 2023