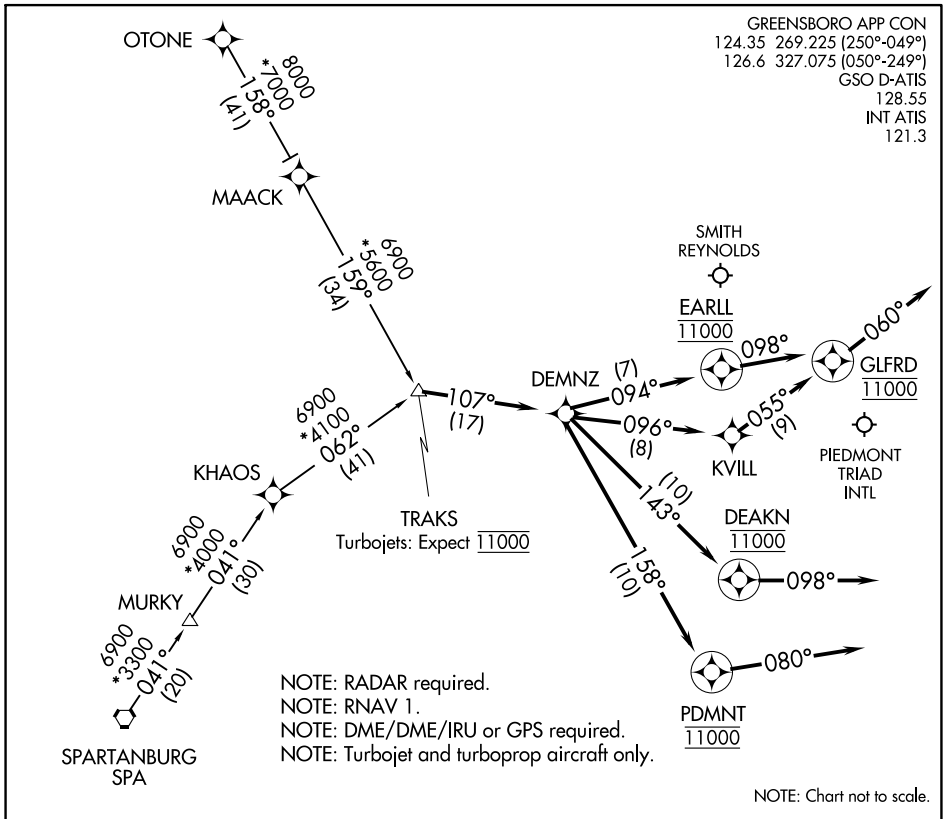


# TRAKS THREE ARRIVAL (RNAV)

GREENSBORO, NORTH CAROLINA



SE-2, 30 NOV 2023 to 28 DEC 2023

SE-2, 30 NOV 2023 to 28 DEC 2023

## ARRIVAL ROUTE DESCRIPTION

OTONE TRANSITION (OTONE.TRAKS3)

SPARTANBURG TRANSITION (SPA.TRAKS3)

GSO: From TRAKS on track 107° to DEMNZ.

LANDING RUNWAY 05L: From DEMNZ on track 143° to cross DEAKN at 11000, then on heading 098°. Expect RADAR vectors to final approach course.

LANDING RUNWAY 05R: From DEMNZ on track 158° to cross PDMNT at 11000, then on heading 080°. Expect RADAR vectors to final approach course.

LANDING RUNWAYS 14/32: From DEMNZ on track 094° to cross EARLL at 11000, then on heading 098°. Expect RADAR vectors to final approach course.

LANDING RUNWAYS 23L/R: From DEMNZ on track 096° to KVILL, then on track 055° to cross GLFRD at 11000, then on heading 060°. Expect RADAR vectors to final approach course.

LANDING INT: From TRAKS on track 107° to DEMNZ, then on track 143° to cross DEAKN at 11000, then on heading 098°. Expect RADAR vectors to final approach course.

# TRAKS THREE ARRIVAL (RNAV)

GREENSBORO, NORTH CAROLINA