

OGDEN, UTAH

TACAN X RWY 14

TACAN HIF Chan 49	APCH CRS 131°	Rwy ldg TDZE Arprt Elev	13,500 4786 4789
----------------------	------------------	-------------------------------	------------------------

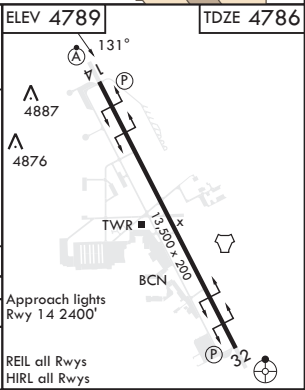
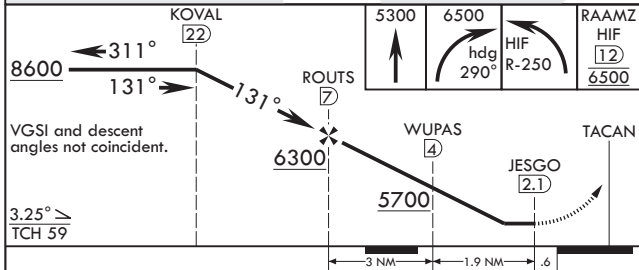
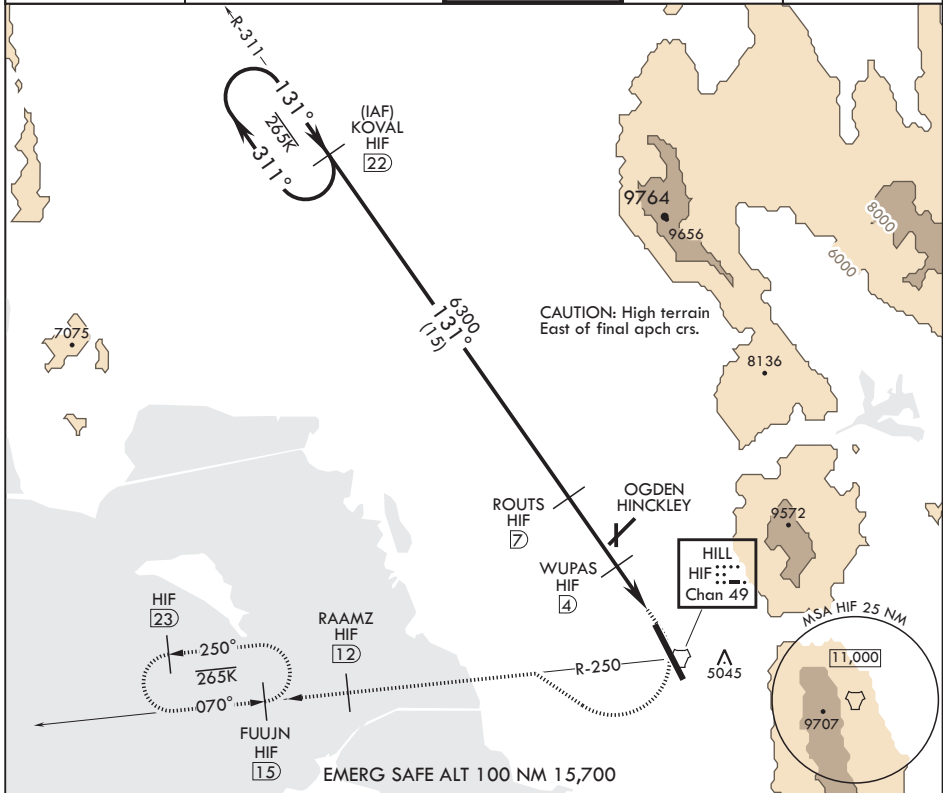
AL-296 (USAF)

HILL AFB (KHIF)

▼ * When ALS inop, increase RVR to 55, vis to 1 mile.
** Circling not authorized in sector NE of Rwy 14-32.

ALS-F-2
MISSED APPROACH: Climb to 5300, then turn right heading 290°, remain within HIF TACAN 5.7 DME until established on 290° heading. Intercept HIF R-250 outbound. Cross RAAMZ at 6500, then climb and maintain 7200 direct to FUJUN and hold.

ATIS 134.925 397.9	SALT LAKE CITY APP CON 121.1 319.25	TOWER 127.15 263.15	GND CON 121.6 275.8	CLNC DEL 124.1 335.8
-----------------------	--	------------------------	------------------------	-------------------------



CATEGORY	A	B	C	D	E
S-14*	5160/24 374 (400-½)		5160/40 374		(400-¾)
CIRCLING**	5280-1 491 (500-1)		5280-1½ 491 (500-1½)	5340-2 551 (600-2)	5900-3 1111 (1200-3)

OGDEN, UTAH
Amdt 7 05OCT23

41°07'N - 111°58'W

HILL AFB (KHIF)

TACAN X RWY 14

SW-4, 30 NOV 2023 to 28 DEC 2023

SW-4, 30 NOV 2023 to 28 DEC 2023