

# BLYTHE FIVE ARRIVAL

AL-322 (FAA)

PHOENIX, ARIZONA

SW-4, 30 NOV 2023 to 28 DEC 2023

## ARRIVAL ROUTE DESCRIPTION

**BLYTHE TRANSITION (BLH.BLH5):** From over BLH VORTAC on BLH R-082 to SALOM, then on GBN R-285 and IWA R-256 to ARLIN. Thence . . . .

**PHOENIX SKY HARBOR INTL:** Rwy 7L/R or 8: From over ARLIN, expect vectors to final approach course; Rwy 25L/R or 26: From over ARLIN, on IWA R-256 to TUKEE. Expect vectors to final approach course prior to TUKEE.

**SATELLITE AIRPORTS:** Expect vectors after passing SALOM.

**LOST COMMUNICATIONS:** After ARLIN, on IWA R-256 and PXR R-143 to PXR VORTAC.

### SALOM VERTICAL NAVIGATION PLANNING INFORMATION

Turboprop expect 17000  
Turboprop landing KPHX expect vectors after SALOM.

10000  
082° (44)  
BLYTHE  
117.4 BLH  
Chan 121

BUCKEYE  
110.6 BKK  
Chan 43

PHOENIX  
115.6 PXR  
Chan 103

PHOENIX APP CON  
124.1 256.9  
PHOENIX TOWER  
118.7 278.8 (Rwy 8-26)  
PHOENIX GND CON  
119.75 269.2  
CHD ATIS  
128.325  
FFZ ATIS  
118.25  
DVT ATIS  
126.5  
IWA ATIS \*  
133.5 270.275  
PHX D-ATIS  
127.575  
SDL ATIS \*  
118.6

FALCON  
FLD

SCOTTSDALE

PHOENIX-DEER  
VALLEY

PHOENIX-SKY  
HARBOR INTL

PHOENIX-ARLIN

ARLIN

HYDRR

SADIL

TUKEE

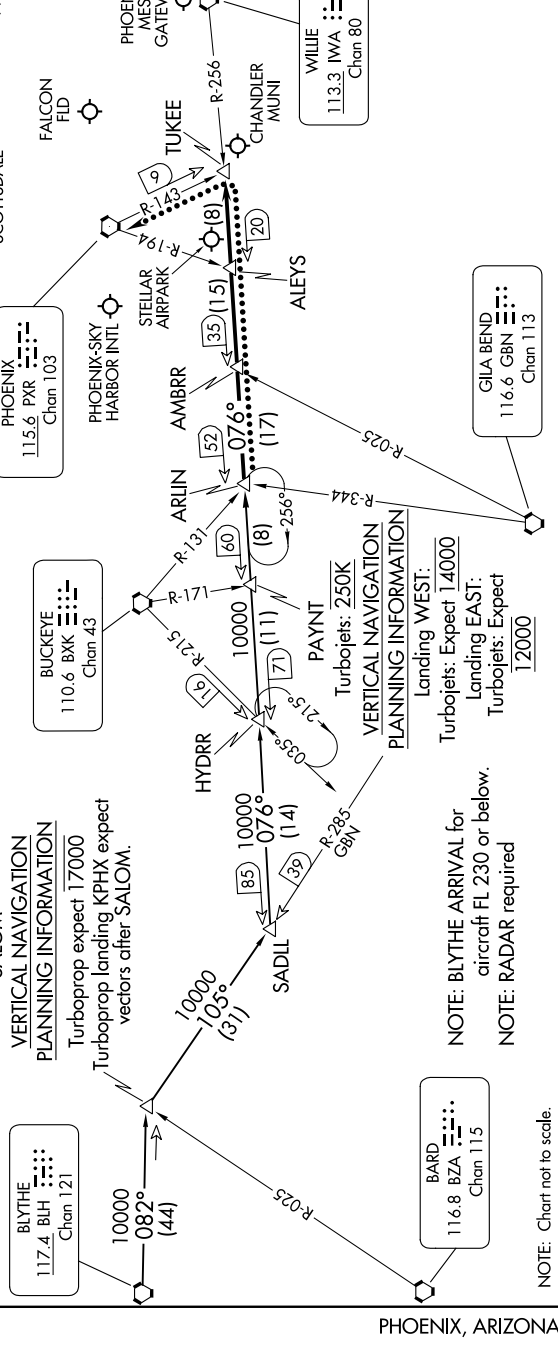
CHANDLER  
MUNI

PHOENIX-  
MESA  
GATEWAY

WILLIE  
113.3 IWA  
Chan 80

GILA BEND  
116.6 GBN  
Chan 113

BARD  
116.8 BZA  
Chan 115



# BLYTHE FIVE ARRIVAL

PHOENIX, ARIZONA

SW-4, 30 NOV 2023 to 28 DEC 2023