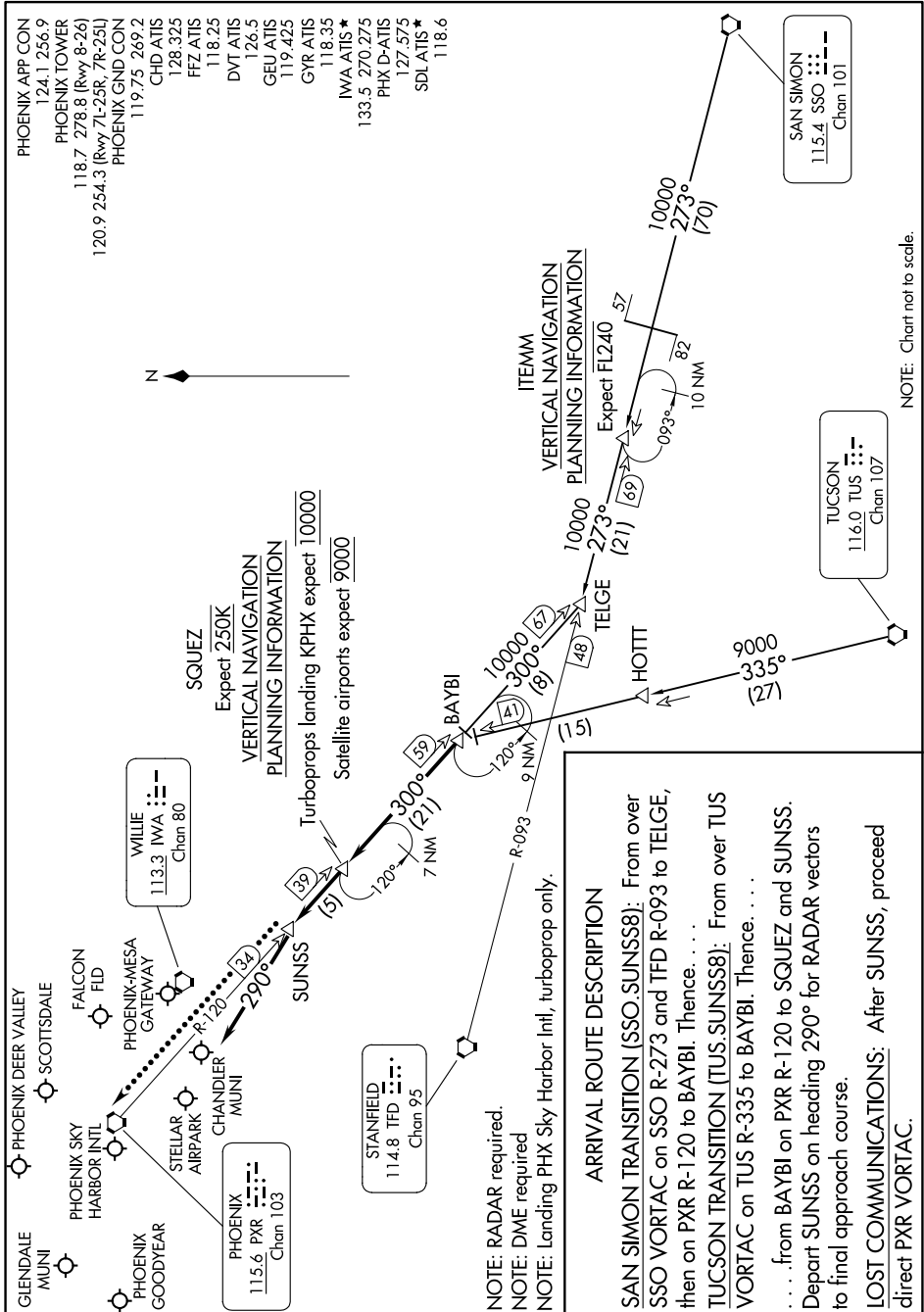


SUNSS EIGHT ARRIVAL

AL-322 (FAA)

PHOENIX, ARIZONA

SW-4, 30 NOV 2023 to 28 DEC 2023



NOTE: RADAR required.
 NOTE: DME required
 NOTE: Landing PHX Sky Harbor Intl, turboprop only.

ARRIVAL ROUTE DESCRIPTION

SAN SIMON TRANSITION (SSO.SUNSS8): From over SSO VORTAC on SSO R-273 and TFD R-093 to TELGE, then on PXR R-120 to BAYBI. Thence. . . .

TUCSON TRANSITION (TUS.SUNSS8): From over TUS VORTAC on TUS R-335 to BAYBI. Thence. . . .

. . . . from BAYBI on PXR R-120 to SQUEZ and SUNSS. Depart SUNSS on heading 290° for RADAR vectors to final approach course.

LOST COMMUNICATIONS: After SUNSS, proceed direct PXR VORTAC.

- PHOENIX APP CON 124.1 256.9
- PHOENIX TOWER 118.7 278.8 (Rwy 8-26)
- 118.7 278.8 (Rwy 7L-25R, 7R-25L)
- 120.9 254.3 (Rwy 7L-25R, 7R-25L)
- PHOENIX GND CON 119.75 269.2
- CHD ATIS 128.325
- FFZ ATIS 118.25
- DVT ATIS 126.5
- GEU ATIS 119.425
- GYP ATIS 118.35
- 118.35
- IWA ATIS ★ 133.5 270.275
- PHX D-ATIS 127.575
- SDL ATIS ★ 118.6

SAN SIMON
 115.4 SSO
 Chan 101

TUCSON
 116.0 TUS
 Chan 107

NOTE: Chart not to scale.

SUNSS EIGHT ARRIVAL

PHOENIX, ARIZONA

SW-4, 30 NOV 2023 to 28 DEC 2023