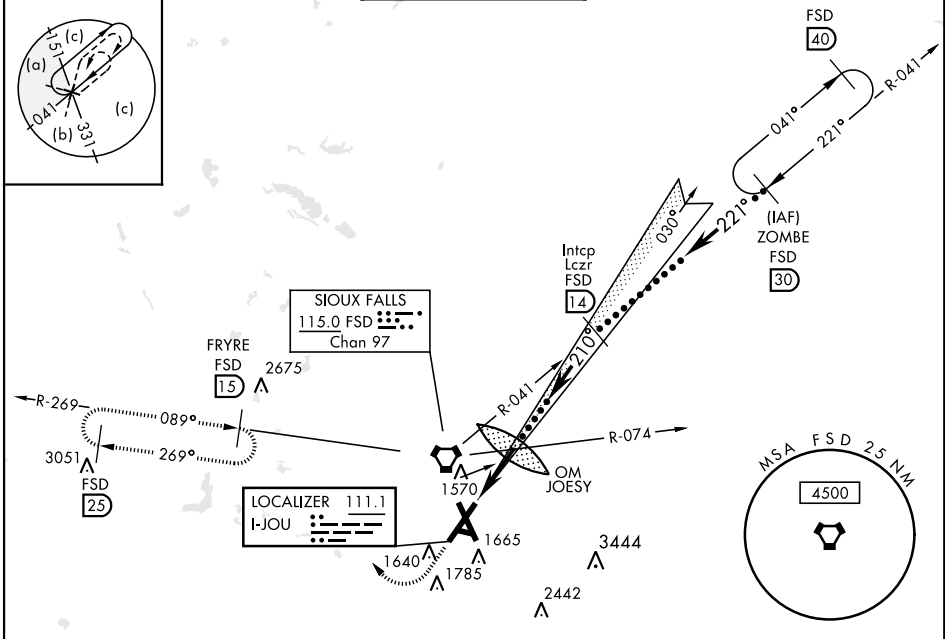


SIoux FALLS, SOUTH DAKOTA

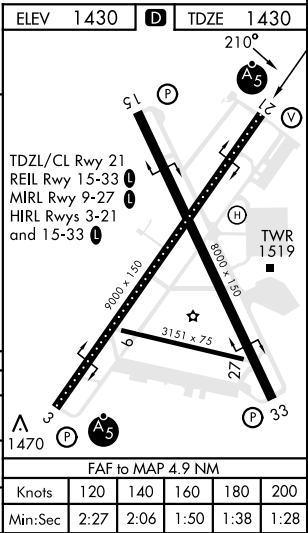
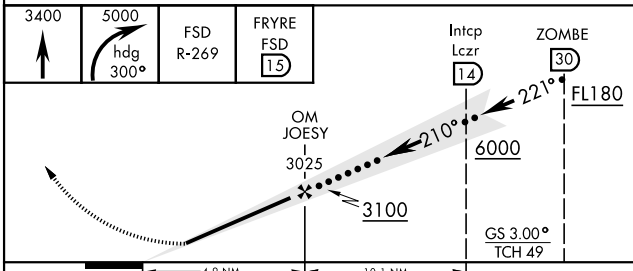
# HI-ILS or LOC RWY 21

LOC I-JOU <b>111.1</b>	APCH CRS <b>210°</b>	Rwy ldg <b>8999</b> TDZE <b>1430</b> Arprt Elev <b>1430</b>	AL-396 [USAF]	JOE FOSS FLD (KFSD)
DME required. RADAR required for procedure entry.			MALSR	MISSED APPROACH: Climb to 3400 then climbing right turn to 5000 on heading 300° and FSD R-269 to FRYRE 1.5 DME and hold.
**When ALS inop, increase RVR to 40 and vis to 3/4 miles. **When ALS inop, increase CAT CDE vis to 1 1/8 miles.				

ATIS <b>126.6</b>	SIoux FALLS APP CON <b>125.8 306.2</b>	SIoux FALLS TOWER ★ <b>118.3(CTAF) 257.8</b>	GND CON <b>121.9 348.6</b>	ASR
----------------------	---	---	-------------------------------	-----



EMERG SAFE ALT 100 NM 4600



CATEGORY	C	D	E
S-ILS 21*	1630/18	200	(200-1/2)
S-LOC 21**	1920/50 490	(500-1)	1920/60 490 (500-1 1/2)
CIRCLING	2060-1 3/4 630 (700-1 3/4)	2200-2 1/2 770 (800-2 1/2)	2300-3 870 (900-3)

SIoux FALLS, SOUTH DAKOTA

43° 35' N - 96° 45' W

JOE FOSS FLD (KFSD)

Amdt 6C 04NOV21

# HI-ILS or LOC RWY 21

NC-1, 30 NOV 2023 to 28 DEC 2023

NC-1, 30 NOV 2023 to 28 DEC 2023