

SIoux FALLS, SOUTH DAKOTA

HI-ILS or LOC RWY 3

LOC I-FSD 109.9	APCH CRS 030°	Rwy ldg 8999 TDZE 1424 Arpt Elev 1430
---------------------------	-------------------------	--

AL-396 [USAF]

JOE FOSS FLD (KFSD)

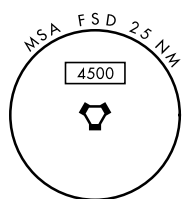
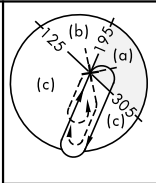
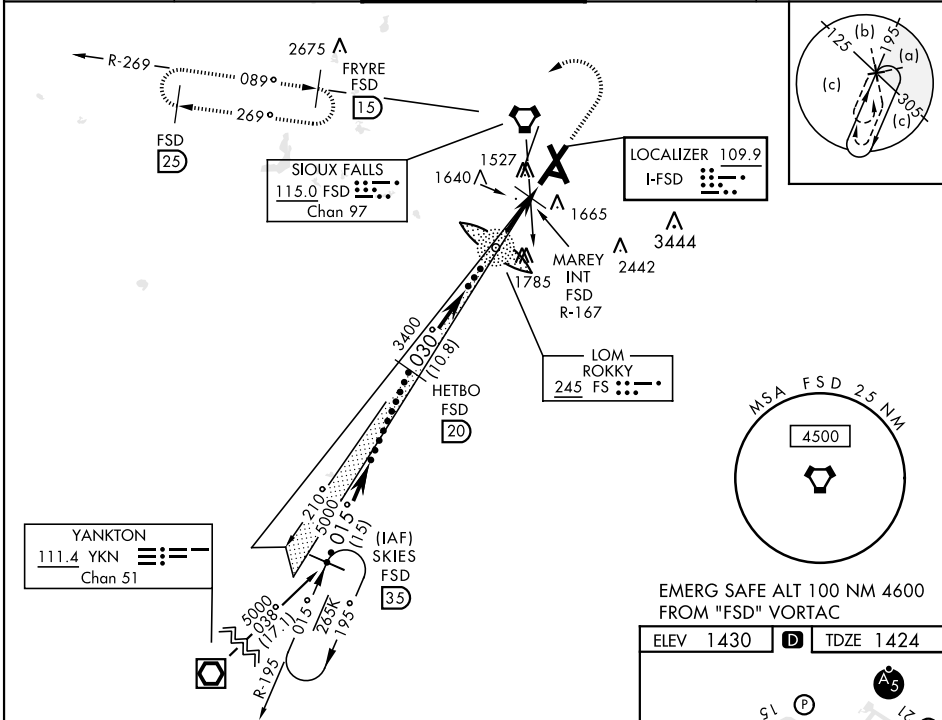
DME required.

- When ALS inop, increase CAT CDE RVR to 40, vis to ¼ mile.
- When ALS inop, increase CAT CDE vis to 1 ½ mile.
- When ALS inop, increase CAT CDE RVR to 55, vis to 1 mile.

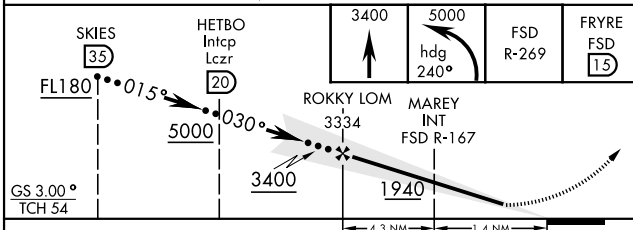


MISSED APPROACH: Climb to 3400, then climbing left turn to 5000 on heading 240° and FSD VORTAC R-269 to FRYRE (FSD 15 DME) and hold.

ATIS 126.6	SIoux FALLS APP CON 125.8 306.2	SIoux FALLS TOWER ★ 118.3(CTAF) 257.8	GND CON 121.9 348.6	ASR
----------------------	---	---	-------------------------------	-----



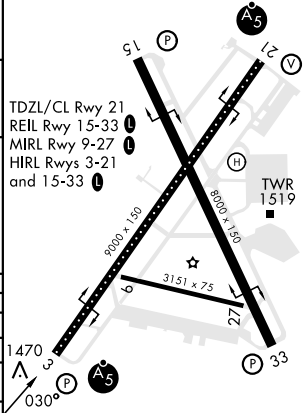
EMERG SAFE ALT 100 NM 4600 FROM "FSD" VORTAC



ELEV 1430	TDZE 1424
-----------	-----------

CATEGORY	C	D	E
S-ILS 3*	1674/24	250	(300-1/2)
S-LOC 3**	1940/55 516 (600-1)	1940/60 516	(600-1 1/2)
CIRCLING	2060-1 3/4 630 (700-1 3/4)	2200-2 1/2 770 (800-2 1/2)	2300-3 870 (900-3)

MAREY FIX MINIMA			
S-LOC 3***	1780/30 356 (400-3/4)	1780/40 356	(400-3/4)
CIRCLING	2060-1 3/4 630 (700-1 3/4)	2200-2 1/2 770 (800-2 1/2)	2300-3 870 (900-3)



FAF to MAP 5.7 NM					
Knots	120	140	160	180	200
Min:Sec	2:51	2:27	2:08	1:54	1:43

SIoux FALLS, SOUTH DAKOTA

43°35'N-96°45'W

JOE FOSS FLD (KFSD)

Amtd 9B 04NOV21

HI-ILS or LOC RWY 3

NC-1, 30 NOV 2023 to 28 DEC 2023

NC-1, 30 NOV 2023 to 28 DEC 2023