

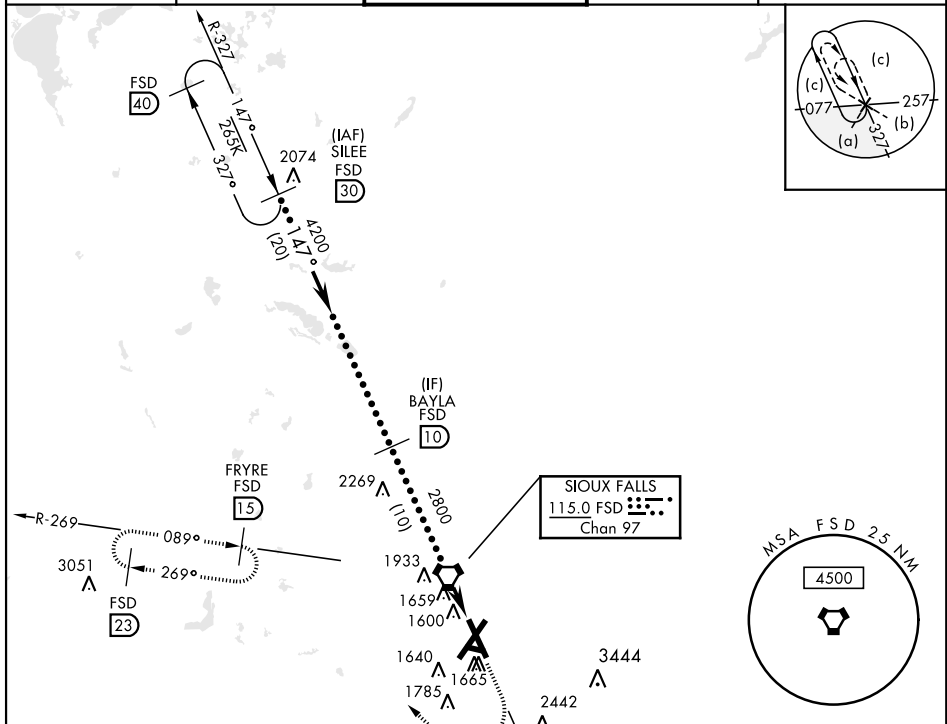
SIoux FALLS, SOUTH DAKOTA

HI-TACAN RWY 15

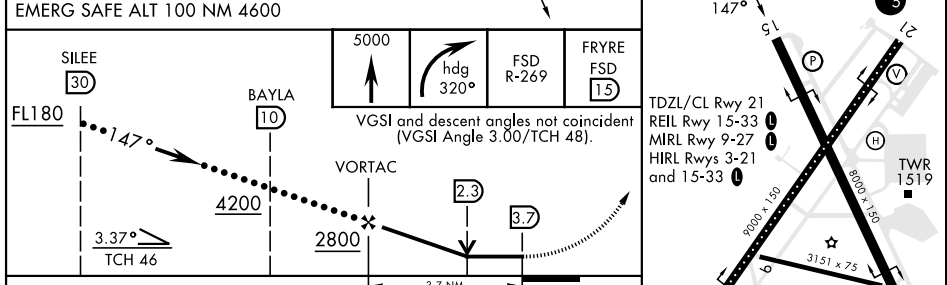
VORTAC FSD 115.0 Chan 97	APCH CRS 147°	Rwy Idg 8000 TDZE 1429 Arprt Elev 1430	AL-396 [USAF]	JOE FOSS FLD (KFSD)
--	-------------------------	---	---------------	---------------------

MISSED APPROACH: Climb to 5000 then right turn on heading 320° and FSD R-269 to FRYRE 15 DME and hold.

ATIS 126.6	SIoux FALLS APP CON 125.8 306.2	SIoux FALLS TOWER ★ 118.3(CTAF) 257.8	GND CON 121.9 348.6	ASR
----------------------	---	---	-------------------------------	-----



ELEV 1430	TDZE 1429
-----------	-----------



EMERG SAFE ALT 100 NM 4600			
SILEE 30	BAYLA 10	VORTAC	FRYRE 15
FL180	4200	2800	2300
3.37° TCH 46		3.7 NM	
TDZL/CL Rwy 21	REIL Rwy 15-33	MIRL Rwy 9-27	HIRL Rwys 3-21 and 15-33
8000 x 150	8000 x 150	3151 x 75	TWR 1519
1470	1470	1470	1470

SIoux FALLS, SOUTH DAKOTA 43° 35'N-96° 45'W JOE FOSS FLD (KFSD)

HI-TACAN RWY 15

Amtd 8C 04NOV21

NC-1, 30 NOV 2023 to 28 DEC 2023

NC-1, 30 NOV 2023 to 28 DEC 2023