

RNAV (GPS) RWY 9

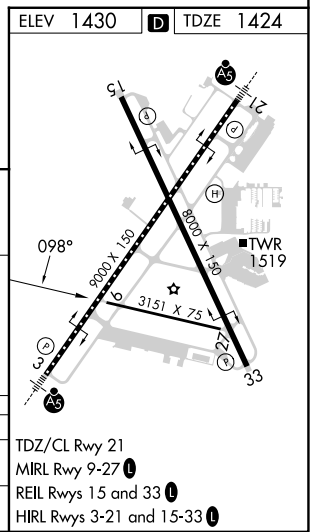
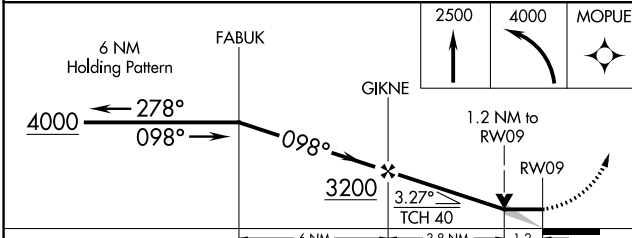
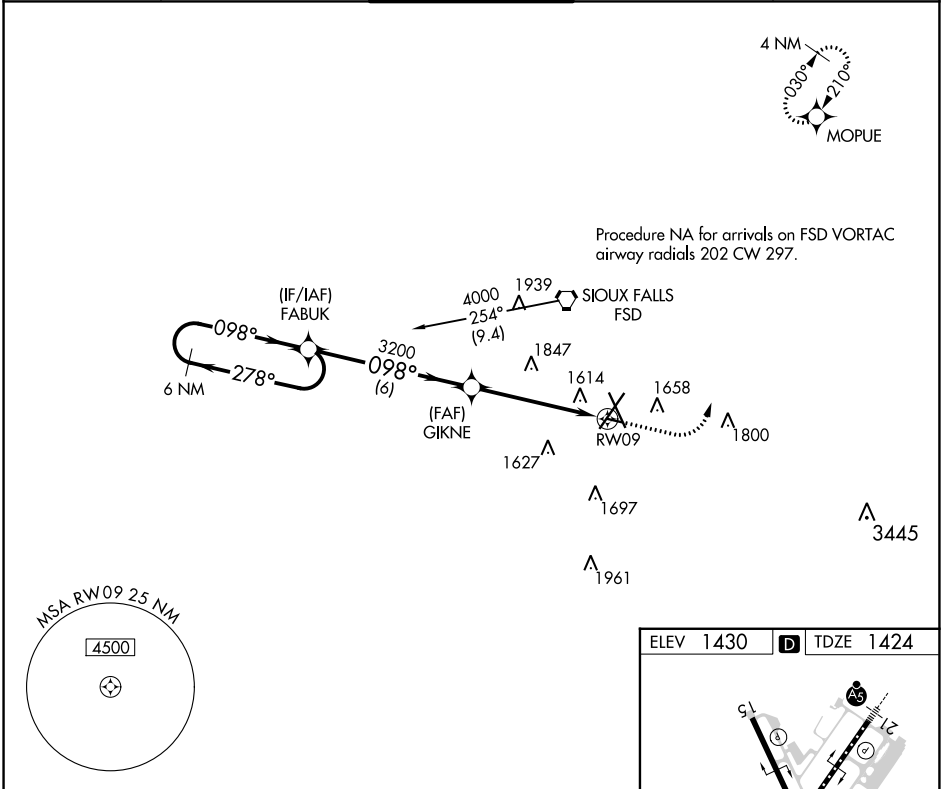
JOE FOSS FLD (FSD)

APP CRS 098°	Rwy Idg TDZE 1424 Apt Elev 1430
------------------------	---

RNP APCH.
 ▼ ASR Rwy 9 helicopter visibility reduction below 3/4 SM NA.
 ❄️ -31°C

MISSED APPROACH: Climb to 2500 then climbing left turn to 4000 direct MOPUE WP and hold.

ATIS 126.6	SIoux FALLS APP CON* 125.8 306.2	SIoux FALLS TOWER* 118.3 (CTAF) 257.8	GND CON 121.9 348.6	UNICOM 122.95
----------------------	--	---	-------------------------------	-------------------------



CATEGORY	A	B	C	D
LNAV MDA	1880-1	456 (500-1)		NA
CIRCLING	1960-1 530 (600-1)	1980-1 550 (600-1)		NA

ELEV 1430 TDZE 1424

TDZ/CL Rwy 21
 MRL Rwy 9-27
 REIL Rws 15 and 33
 HIRL Rws 3-21 and 15-33

NC-1, 30 NOV 2023 to 28 DEC 2023

NC-1, 30 NOV 2023 to 28 DEC 2023