

VORTAC FSD <b>115.0</b> Chan <b>97</b>	APP CRS <b>326°</b>	Rwy Idg TDZE Apt Elev	<b>8000</b> <b>1424</b> <b>1430</b>
--	------------------------	-----------------------------	---

# VOR/DME or TACAN RWY 33

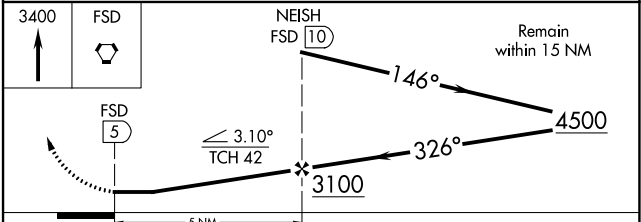
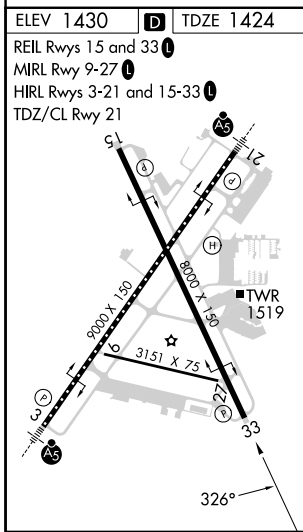
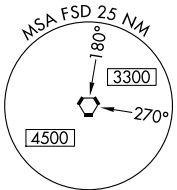
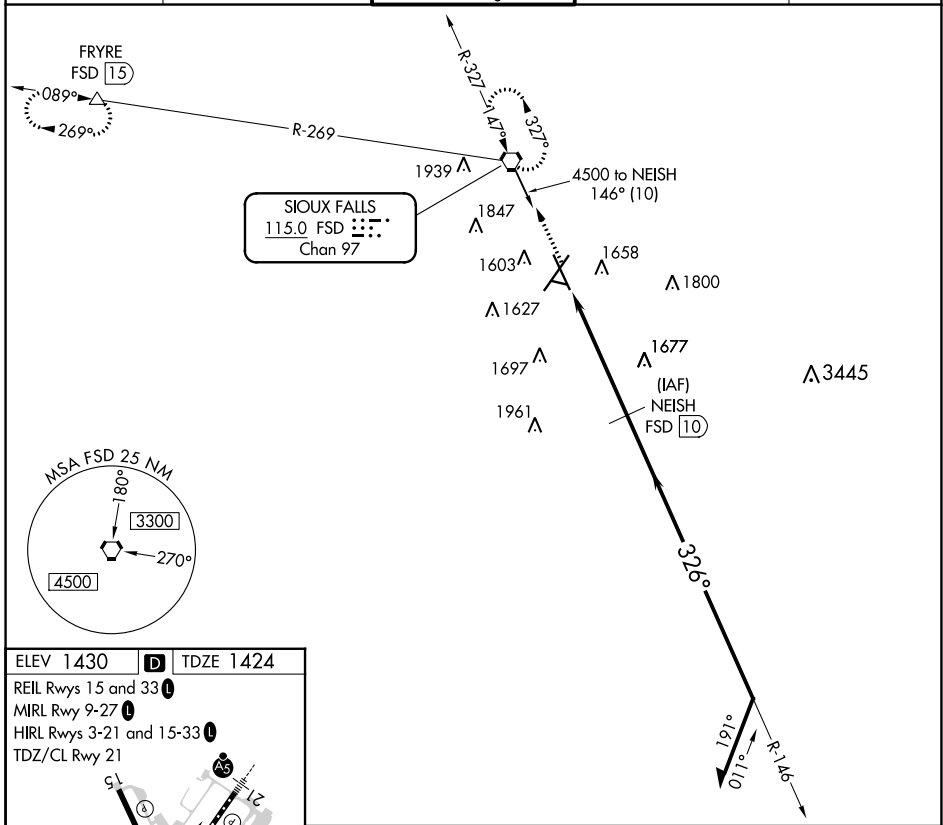
JOE FOSS FLD (FSD)

**ASR** Rwy 33 helicopter visibility reduction below 3/4 SM NA.

Temperature: **-31°C**

MISSED APPROACH: Climb to 3400 direct FSD VORTAC and hold. (TACAN aircraft continue climb to 5000 via FSD R-269 to FRYRE 15 DME and hold west, right turns, 089° inbound.)

ATIS <b>126.6</b>	SIoux FALLS APP CON* <b>125.8 306.2</b>	SIoux FALLS TOWER* <b>118.3 (CTAF) 257.8</b>	GND CON <b>121.9 348.6</b>	UNICOM <b>122.95</b>
----------------------	--	---	-------------------------------	-------------------------



CATEGORY	A	B	C	D	E
S-33	1940-1	516 (600-1)	1940-1 3/8 516 (600-1 3/8)		
<b>C</b> CIRCLING	1960-1 530 (600-1)	1980-1 550 (600-1)	2060-1 3/4 630 (700-1 3/4)	2200-2 1/2 770 (800-2 1/2)	2300-3 870 (900-3)

NC-1, 30 NOV 2023 to 28 DEC 2023

NC-1, 30 NOV 2023 to 28 DEC 2023