

VORTAC FSD 115.0 Chan 97	APP CRS 147°	Rwy Idg 8000 TDZE 1429 Apt Elev 1430
--	------------------------	---

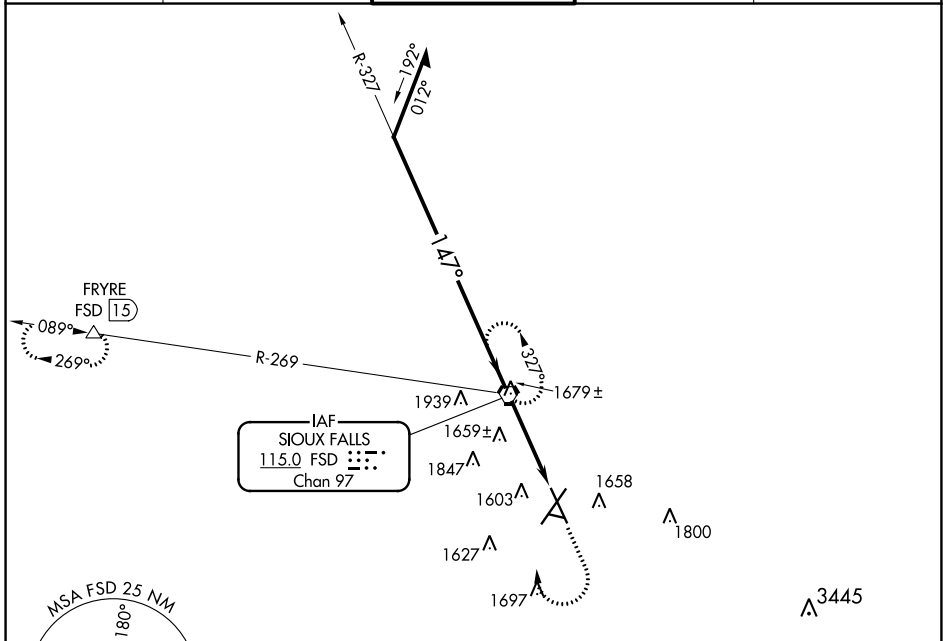
VOR or TACAN RWY 15

JOE FOSS FLD (FSD)

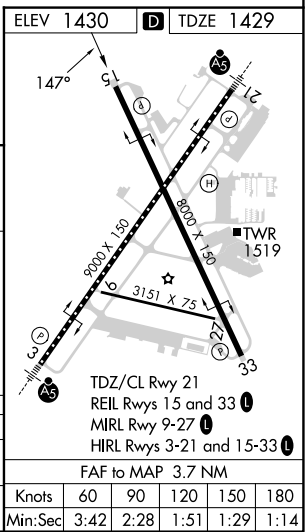
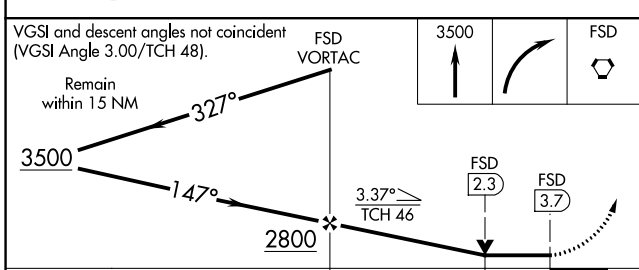
▲ Rwy 15 helicopter visibility reduction below ¼ SM NA.
ASR **-31°C**

MISSED APPROACH: Climb to 3500 then right turn direct FSD VORTAC and hold. (TACAN aircraft continue climb to 5000 via FSD R-269 to FRYRE 15 DME and hold west, right turns, 089° inbound)

ATIS 126.6	SIoux FALLS APP CON* 125.8 306.2	SIoux FALLS TOWER* 118.3(CTAF) 257.8	GND CON 121.9 348.6	UNICOM 122.95
----------------------	--	--	-------------------------------	-------------------------



VGSI and descent angles not coincident (VGSI Angle 3.00/TCH 48).
 Remain within 15 NM



CATEGORY	A	B	C	D	E	
S-15	1920-1	491 (500-1)	1920-1 3/8	491 (500-1 3/8)		
CIRCLING	1960-1 530 (600-1)	1980-1 550 (600-1)	2060-1 3/4 630 (700-1 3/4)	2200-2 1/2 770 (800-2 1/2)	2300-3 870 (900-3)	
	Knots	60	90	120	150	180
	Min:Sec	3:42	2:28	1:51	1:29	1:14

FAF to MAP 3.7 NM

NC-1, 30 NOV 2023 to 28 DEC 2023

NC-1, 30 NOV 2023 to 28 DEC 2023