

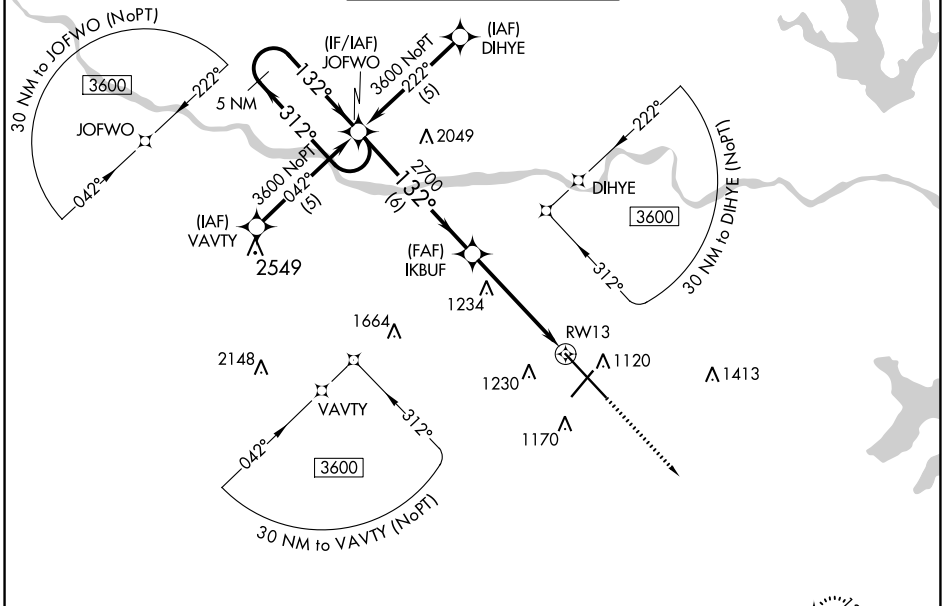
| | | |
|--|------------------------|--|
| WAAS CH 66100 W13A | APP CRS 132° | Rwy ldg 12803 TDZE 1066 Apt Elev 1078 |
|--|------------------------|--|

RNAV (GPS) RWY 13

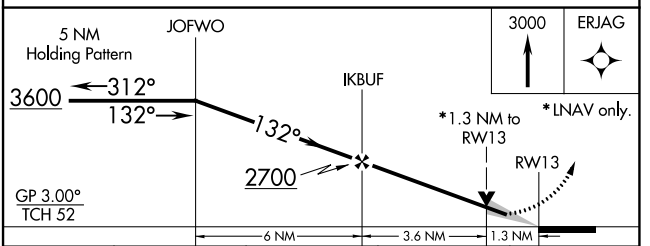
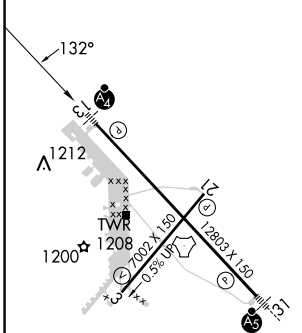
TOPEKA RGNL (F0E)

| | | |
|--|-------|--|
| RNP APCH. | MALSF | MISSED APPROACH: Climb to 3000 direct ERJAG and hold. |
| <p>When local altimeter setting not received, use Philip Billard Muni altimeter setting and increase all DA/MDA 60 feet, increase LPV all Cats visibility 1/8 SM, LNAV Cat C visibility 1/8 SM and Circling Cat D visibility 1/4 SM. Baro-VNAV and VDP NA when using Philip Billard Muni altimeter setting. For uncompensated Baro-VNAV systems, LNAV/VNAV NA below -17°C or above 54°C.</p> | | |

| | | | | |
|-----------------------|--|--|---------------------------------|-------------------------|
| ATIS 128.25 | KANSAS CITY CENTER 123.8 343.7 | FORBES TOWER* 120.8 (CTAF) 340.2 | GND CON 118.425 275.8 | UNICOM 122.95 |
|-----------------------|--|--|---------------------------------|-------------------------|



| | | |
|-----------|----------|-----------|
| ELEV 1078 | D | TDZE 1066 |
|-----------|----------|-----------|



| CATEGORY | A | B | C | D |
|-------------------|-----------------------|-----------------------|-------------------------------|-------------------------------|
| LPV DA | | 1316-3/4 | 250 (300-3/4) | |
| LNAV/VNAV DA | | 1506-1 1/2 | 440 (500-1 1/2) | |
| LNAV MDA | 1540-1 | 474 (500-1) | 1540-1 3/8 474 (500-1 3/8) | 1540-1 1/2 474 (500-1 1/2) |
| C CIRCLING | 1540-1 462 (500-1) | 1580-1 502 (600-1) | 1580-1 1/2 502 (600-1 1/2) | 1700-2 622 (700-2) |

REIL Rwy 3, 13 and 21
MIRL Rwy 3-21
HIRL Rwy 13-31

NC-2, 30 NOV 2023 to 28 DEC 2023

NC-2, 30 NOV 2023 to 28 DEC 2023