

DOVER, DELAWARE

ILS or LOC or RNAV (GPS) RWY 1

DOVER AFB (KDOV)

SBAS CH 52207 W01A	APCH CRS 015°	Rwy Idg 9602 TDZE 25 Arpt Elev 29
--	-------------------------	--

AL-562 [USAF]

RNP APCH. RNAV1 - GPS or RADAR required for ILS, LOC.

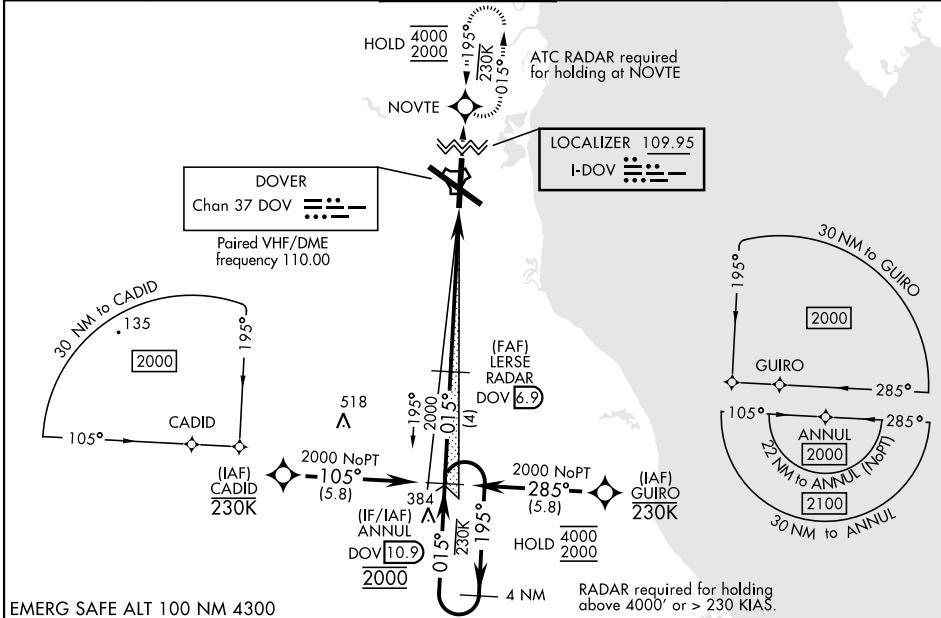
- ▼ * When TDZL/CL inop, increase RVR to 24, RVR of 18 authorized with use of FD or AP or HUD to DA. When ALS inop, increase RVR to 40, vis to ¼ mile.
- ** When ALS inop, increase CAT AB RVR to 55, vis to 1 mile, CAT CDE vis to 1⅓ miles.
- *** When ALS inop, increase CAT AB RVR to 55, vis to 1 mile, CAT CD vis to 1⅓ miles.



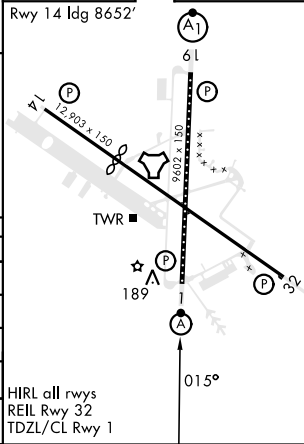
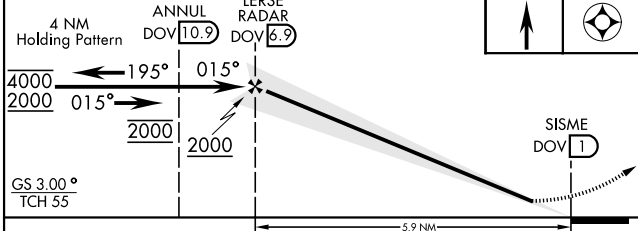
MISSED APPROACH: Climb to 2000 direct NOVTE and hold.

ALTERNATE MISSED APPROACH: Fly runway heading, climb and maintain 2000, expect radar vectors from ATC.

ATIS 127.825 273.5	APP CON 132.425 257.875	TOWER 126.35 279.625	GND CON 118.875 225.4	CINC DEL 125.55 289.4
------------------------------	-----------------------------------	--------------------------------	---------------------------------	---------------------------------



4 NM Holding Pattern	ANNUL DOV 10.9	LERSE RADAR DOV 6.9	2000	NOVTE	ELEV 29	TDZE 25
----------------------	----------------	---------------------	------	-------	---------	---------



CATEGORY	A	B	C	D	E
S-ILS 1*	225/18		200	(200-½)	
LPV DA*	225/18		200	(200-½) NA	
S-LOC 1**	500/24	475 (500-½)	500/50	475	(500-1)
LNAV MDA***	500/24	475 (500-½)	500/50	475 (500-1)	NA
CIRCLING	540-1	511 (600-1)	620-1½ 591 (600-½)	620-2 591 (600-2)	1080-3 1051 (1100-3)

HIRL all rwy's
REIL Rwy 32
TDZL/CL Rwy 1

DOVER, DELAWARE

39° 08' N-75° 28' W

DOVER AFB (KDOV)

Amtd 1 10AUG23

ILS or LOC or RNAV (GPS) RWY 1

NE-3, 30 NOV 2023 to 28 DEC 2023

NE-3, 30 NOV 2023 to 28 DEC 2023