

DOVER, DELAWARE

# ILS or LOC or RNAV (GPS) RWY 19

SBAS CH <b>52208</b> <b>W19A</b>	APCH CRS <b>195°</b>	Rwy ldg <b>9602</b> TDZE <b>23</b> Arprt Elev <b>29</b>
--	-------------------------	---

AL-562 [USAF]

DOVER AFB (KDOV)

RNP APCH. RNAV1 - GPS or RADAR required for ILS, LOC

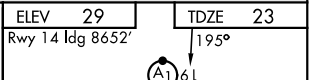
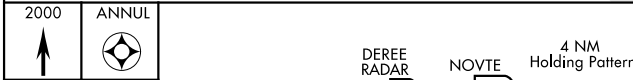
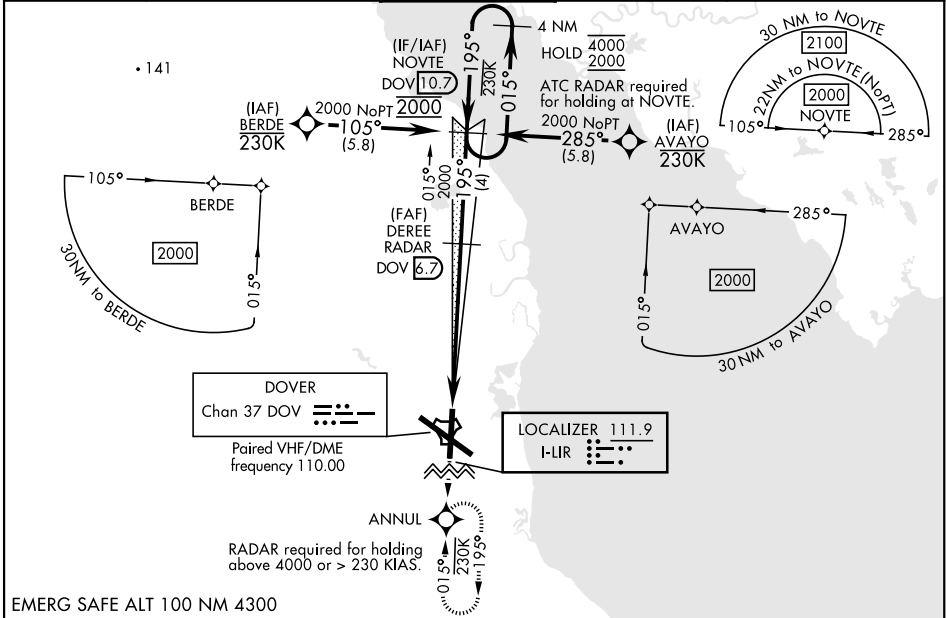
- \* When ALS inop, increase RVR to 40, vis to 3/4 mile. RVR of 18 authorized with use of FD or AP or HUD to DA.
- \*\* When ALS inop, increase CAT AB RVR to 55, vis to 1 mile, CAT CDE vis to 1 3/8 miles.
- \*\*\* When ALS inop, increase CAT AB RVR to 55, vis to 1 mile, CAT CD vis to 1 3/8 miles.



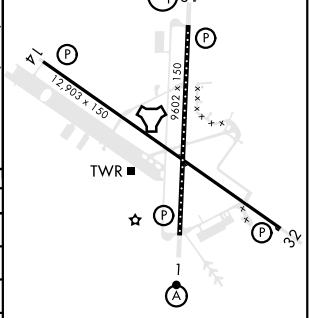
MISSED APPROACH: Climb to 2000 direct ANNUL and hold.

ALTERNATE MISSED APPROACH: Fly runway heading, climb and maintain 2000, expect radar vectors from ATC.

ATIS <b>127.825 273.5</b>	APP CON <b>132.425 257.875</b>	TOWER <b>126.35 279.625</b>	GND CON <b>118.875 225.4</b>	CINC DEL <b>125.55 289.4</b>
------------------------------	-----------------------------------	--------------------------------	---------------------------------	---------------------------------



CATEGORY	A	B	C	D	E
S-ILS 19*	223/24		200	(200-1/2)	
LPV DA*	223/24		200	(200-1/2) NA	
S-LOC 19**	480/24	457 (500-1/2)	480/45	457	(500-7/8)
LNAV MDA***	480/24	457 (500-1/2)	480/45	457	(500-7/8) NA
CIRCLING	540-1	511 (600-1)	620-1 1/2 591 (600-1/2)	620-2 591 (600-2)	1080-3 1051 (1100-3)



HIRL all rwys	REL Rwy 32	TDZL/CL Rwy 1
---------------	------------	---------------

DOVER, DELAWARE  
Amdt 3 10AUG23

39°08'N-75°28'W

DOVER AFB (KDOV)

# ILS or LOC or RNAV (GPS) RWY 19

NE-3, 30 NOV 2023 to 28 DEC 2023

NE-3, 30 NOV 2023 to 28 DEC 2023