

DOVER, DELAWARE

RNAV (GPS) RWY 32

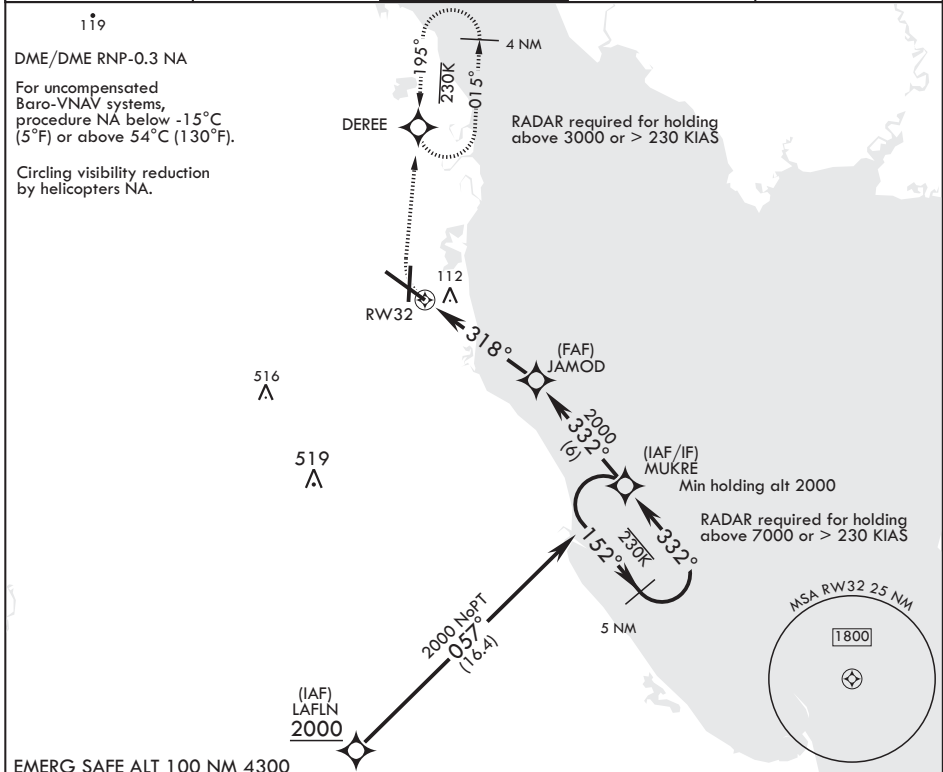
WAAS CH 91360 W32A	APCH CRS 318°	Rwy ldg 12,903 TDZE 26 Arpt Elev 29
--------------------------	------------------	---

AL-562 (USAF)

DOVER AFB (KDOV)

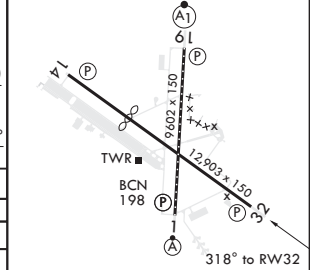
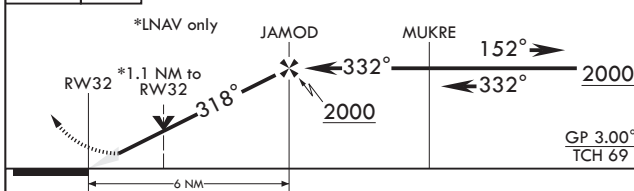
⚠ MISSED APPROACH: Climbing right turn to 2000 direct DERE and hold, continue climb-in-hold to 2000.

ATIS 127.825 273.5	APP CON 132.425 257.875	TOWER 126.35 279.625	GND CON 118.875 225.4	CLNC DEL 125.55 289.4
-----------------------	----------------------------	--------------------------------	--------------------------	--------------------------



EMERG SAFE ALT 100 NM 4300

2000 **DEREE** **5 NM holding pattern** **ELEV 29** **TDZE 26**
Rwy 14 ldg 8652'



CATEGORY	A	B	C	D
LPV DA	276-¾	250	(300-¾)	
LNAV/VNAV DA	456-1¼	430	(500-1¼)	
LNAV MDA	460-1 434 (500-1)	460-1¼ 434 (500-1¼)		
C CIRCLING	540-1 511 (600-1)	620-1½ 591 (600-1½)	620-2 591 (600-2)	

REIL Rwy 32
HIRL all Rwys
TDZL/CL Rwy 1

DOVER, DELAWARE
Amdt 5 11AUG22

39°08'N - 75°28'W

DOVER AFB (KDOV)

RNAV (GPS) RWY 32

NE-3, 30 NOV 2023 to 28 DEC 2023

NE-3, 30 NOV 2023 to 28 DEC 2023