

GULFPORT, MISSISSIPPI

HI-TACAN Y RWY 14

VORTAC GPT 109.0 Chan 27	APCH CRS 140°	Rwy Idg TDZE Arpt Elev 9002 27 28
--	-------------------------	---

AL-576 [USAF]

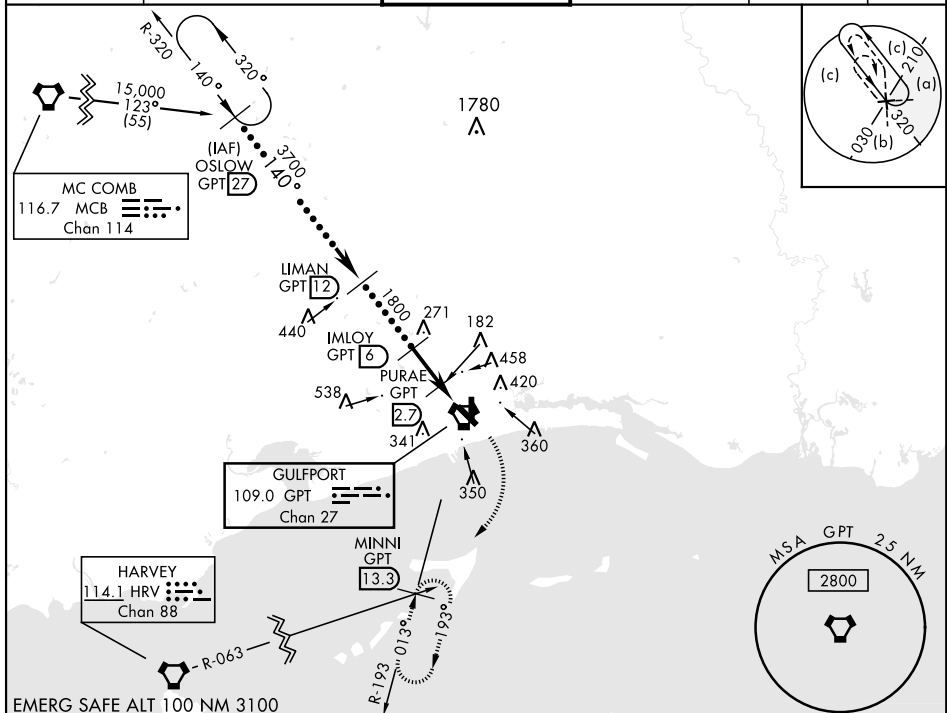
GULFPORT-BILOXI INTL (KGPT)

⚠ * When ALS inop, increase RVR to 6000.
⚠ ** When ALS inop, increase vis to 1 1/8 miles.

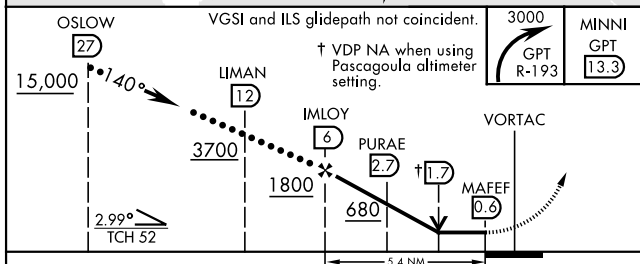
MALSR
A5

MISSED APPROACH: Climbing right turn to 3000 on GPT R-193 to MINNI/13.3 DME and hold.

ATIS ★ 119.45	GULFPORT APP CON 124.6 354.1 130°-309° 127.5 254.25 310°-129°	GULFPORT TOWER ★ 123.7 CTAF 0 339.8	GND CON 120.4 348.6	UNICOM 122.95	ASR
-------------------------	---	--	-------------------------------	-------------------------	-----

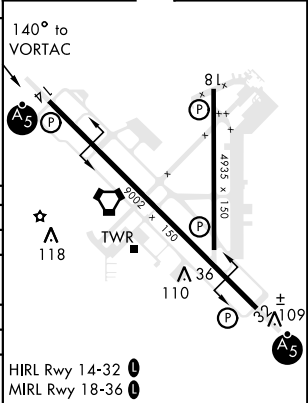


EMERG SAFE ALT 100 NM 3100



ELEV 28	TDZE 27
---------	---------

CATEGORY	C	D	E
S-14 *	440/40	413 (500-3/4)	
CIRCLING	820-2 1/4 792 (800-2 1/4)	820-2 1/2 792 (800-2 1/2)	820-2 3/4 792 (800-2 3/4)
PASCAGOULA ALTIMETER MINIMUMS			
S-14 **	520/50	413 (500-1)	
CIRCLING	900-2 1/2 792 (800-2 1/2)	900-2 3/4 792 (800-2 3/4)	900-3 792 (800-3)



GULFPORT, MISSISSIPPI

30° 24' N-89° 04' W

GULFPORT-BILOXI INTL (KGPT)

Amdt 7A 31DEC20

HI-TACAN Y RWY 14

SC-4, 30 NOV 2023 to 28 DEC 2023

SC-4, 30 NOV 2023 to 28 DEC 2023