

LOC I-GPT 110.9	APP CRS 137°	Rwy Idg TDZE Apt Elev	9002 27 28
---------------------------	------------------------	-----------------------------	---------------------------------------

ILS Z or LOC Z RWY 14

GULFPORT-BILOXI INTL (GPT)

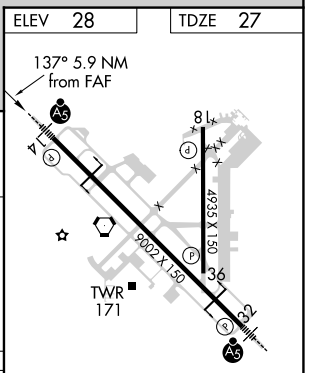
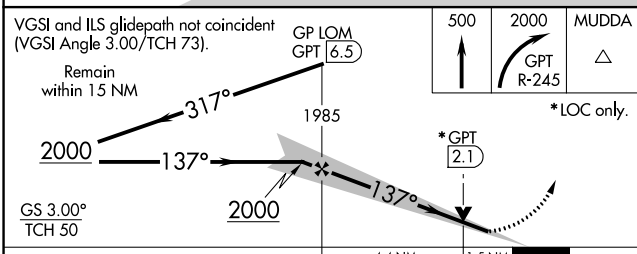
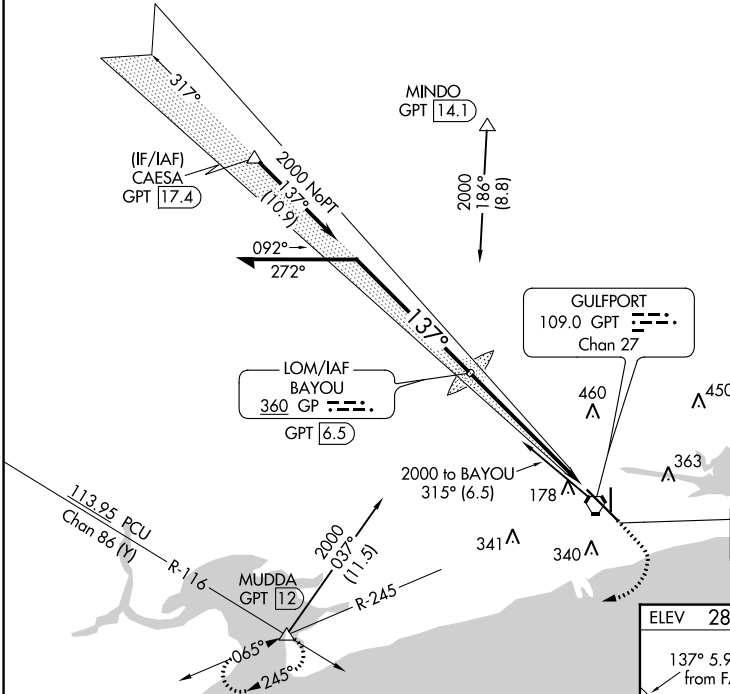
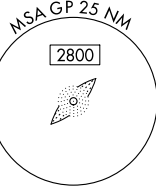
<p>▼ For inop ALS, increase S-ILS 14 Cat E visibility to RVR 4000 and S-LOC 14 Cat E visibility to 1½ SM.</p> <p>▲ ASR **RVR 1800 authorized with use of FD or AP or HUD to DA.</p>	<p>MALSR</p>	<p>MISSED APPROACH: Climb to 500 then climbing right turn to 2000 on GPT VORTAC R-245 to MUDDA INT/12 DME and hold.</p>
--	---------------------	--

<p>ATIS 119.45</p>	<p>GULFPORT APP CON * 127.5 254.25</p>	<p>GULFPORT TOWER * 123.7 (CTAF) 0 339.8</p>	<p>GND CON 120.4 348.6</p>	<p>UNICOM 122.95</p>
--------------------------------------	--	--	--	--

Procedure NA for arrivals at CAESA on V552 westbound.

1549

ALTERNATE MISSED APCH FIX



CATEGORY	A	B	C	D	E	<p>HIRL Rwy 14-32 Ⓛ</p> <p>MIRL Rwy 18-36 Ⓛ</p> <p>FAF to MAP 5.9 NM</p>
	227/24		200 (200-½)			
S-ILS 14**	227/24		200 (200-½)			<p>Knots: 60 90 120 150 180</p> <p>Min:Sec: 5:54 3:56 2:57 2:22 1:58</p>
S-LOC 14	560/24	533 (600-½)	560/55 533 (600-1)			
CIRCLING	560-1	640-1	820-2¼	820-2½	820-2¾	
	532 (600-1)	612 (700-1)	792 (800-2¼)	792 (800-2½)	792 (800-2¾)	

SC-4, 30 NOV 2023 to 28 DEC 2023

SC-4, 30 NOV 2023 to 28 DEC 2023