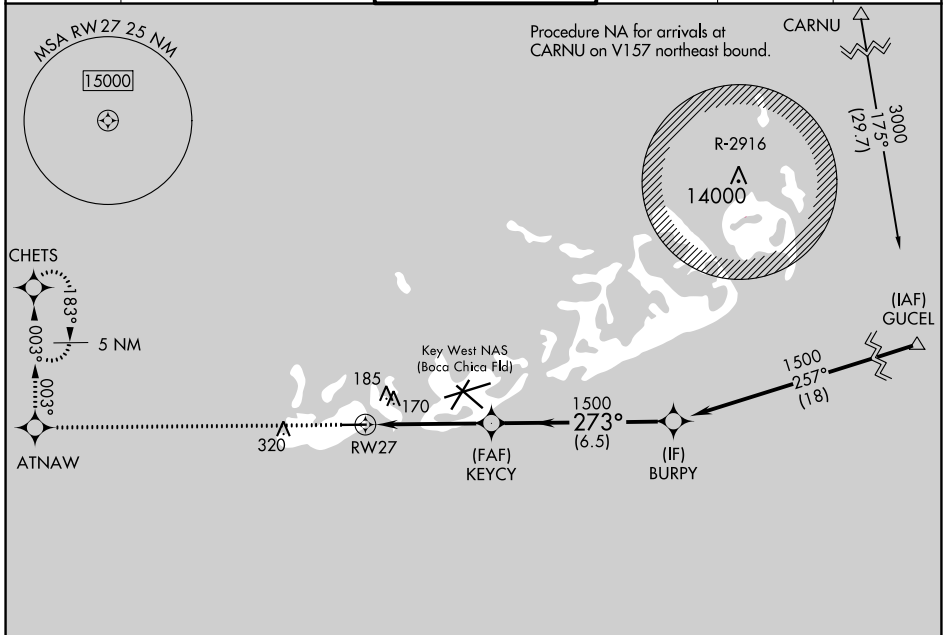


WAAS CH <b>82100</b> <b>W27A</b>	APP CRS <b>273°</b>	Rwy Idg TDZE Apt Elev	<b>4801</b> <b>3</b> <b>3</b>
--	------------------------	-----------------------------	-------------------------------------

# RNAV (GPS) RWY 27

KEY WEST INTL (EYW)

RNP APCH-GPS.		MISSED APPROACH: Climb to 2400 direct ATNAW and via 003° track to CHETS and hold.		
When local altimeter setting not received, use Key West NAS (Boca Chica Fld) altimeter setting. Rwy 27 helicopter visibility reduction below 3/4 SM NA.				
ATIS <b>119.675</b>	NAVY KEY WEST APP CON * <b>124.025 313.7</b>	KEY WEST TOWER * <b>118.2 (CTAF) 0 257.8</b>	GND CON <b>121.9</b>	CLNC DEL <b>121.9</b>
		UNICOM <b>122.95</b>		



SE-3, 30 NOV 2023 to 28 DEC 2023

SE-3, 30 NOV 2023 to 28 DEC 2023

ELEV 3	D	TDZE 3		
2400 ATNAW CHETS ↑ ✨ ✨ 003° tr 003°		VGSi and RNAV glidepath not coincident (VGSi Angle 3.00/TCH 34). KEYCY BURPY Procedure Turn NA		
5076 X 100 TWR 79 71 273° to RW27		RW27 273° 1500 GP 3.00° TCH 45		
		4.5 NM 6.5 NM		
CATEGORY	A	B	C	D
LPV DA	253-1		250 (300-1)	
LNAV MDA	460-1	457 (500-1)	460-1 3/8	457 (500-1 3/8)
CIRCLING	500-1	497 (500-1)	620-1 3/4 617 (700-1 3/4)	620-2 617 (700-2)