

APP CRS	Rwy Idg	<b>7000</b>
<b>120°</b>	TDZE	<b>1225</b>
	Apt Elev	<b>1249</b>

# RNAV (RNP) RWY 12

PANGBORN MEML (EAT)

**▽** For uncompensated Baro-VNAV systems, procedure NA below -10°C (14°F) or above 54°C (130°F). RF required. GPS required. FD or HUD required.

MALSR

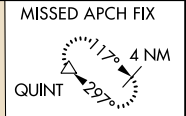
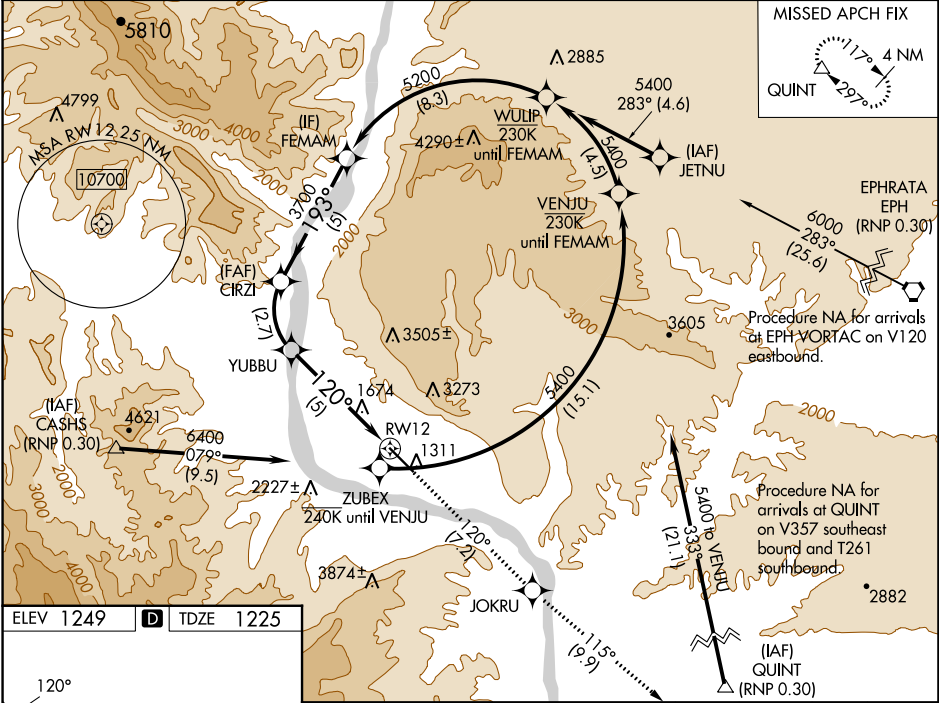


**MISSED APPROACH:** Climb to 5400 on track 120° to JOKRU and on track 115° to QUINT and hold.  
 \*Missed approach requires a minimum climb of 319 feet per NM to 3700.  
 #Missed approach requires a minimum climb of 295 feet per NM to 3700.

ASOS  
**119.925**

SEATTLE CENTER  
**126.1**

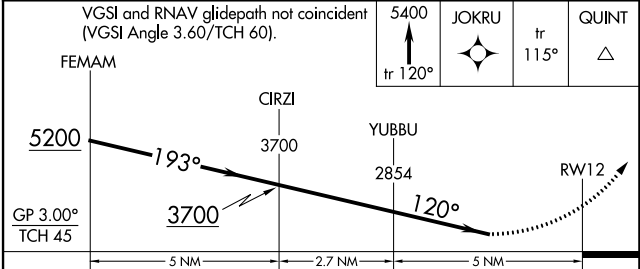
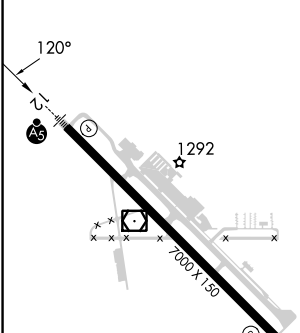
UNICOM  
**123.0 (CTAF) 0**



NW-1, 30 NOV 2023 to 28 DEC 2023

NW-1, 30 NOV 2023 to 28 DEC 2023

ELEV 1249	<b>D</b>	TDZE 1225
-----------	----------	-----------



CATEGORY	A	B	C	D
RNP 0.15 DA*		1995-3	770 (800-3)	
RNP 0.19 DA#		2072-3	847 (900-3)	
RNP 0.30 DA		2417-5	1192 (1200-5)	

**AUTHORIZATION REQUIRED**