

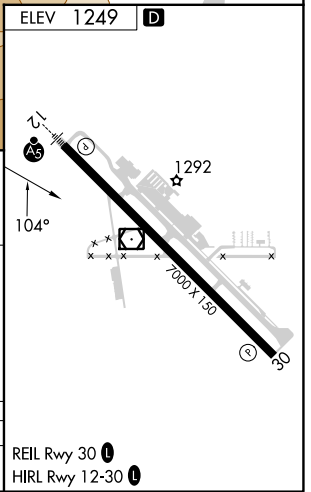
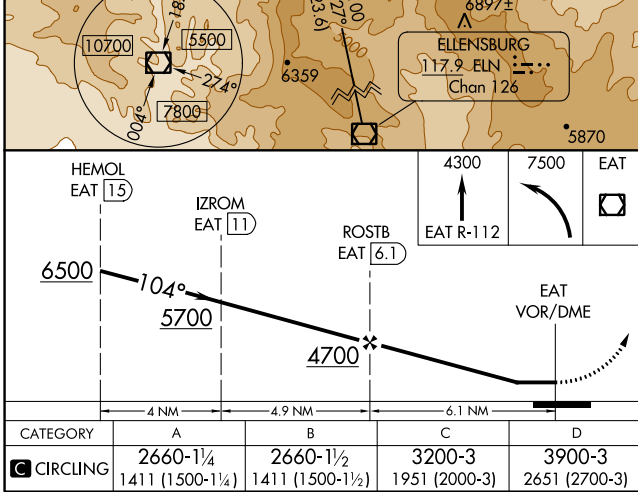
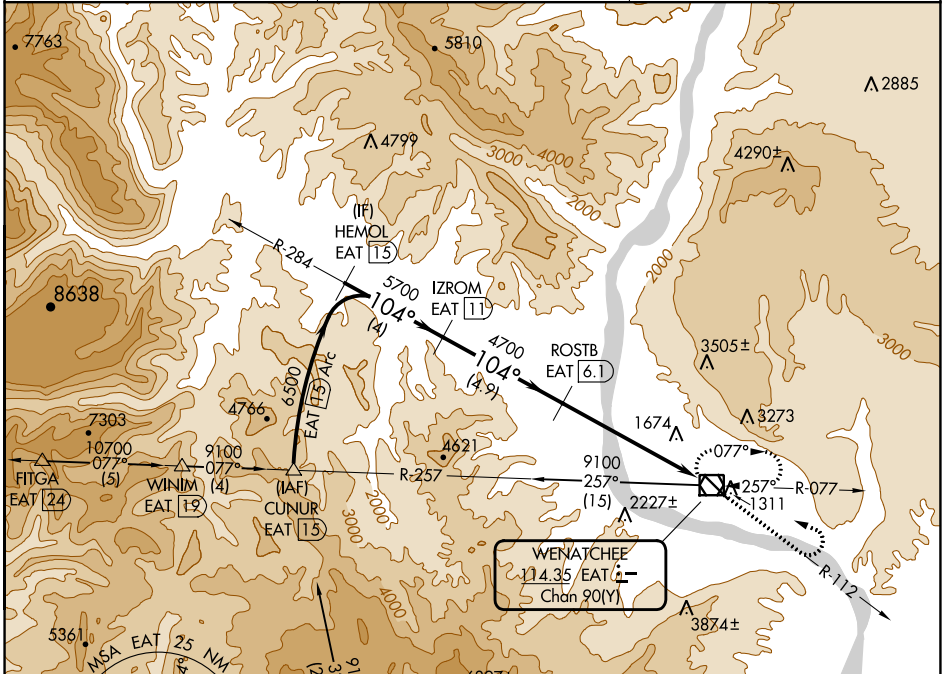
VOR/DME EAT 114.35 Chan 90(Y)	APP CRS 104°	Rwy Idg TDZE Apt Elev 1249	N/A N/A N/A
---	------------------------	--------------------------------------	-------------------

VOR-B

PANGBORN MEML (EAT)

 DME required. Circling NA northeast of Rwy 12-30.	MISSED APPROACH: Climb to 4300 on EAT VOR/DME R-112 then climbing left turn to 7500 direct EAT VOR/DME and hold, continue climb-in-hold to 7500.
--	---

ASOS 119.925	SEATTLE CENTER 126.1	UNICOM 123.0 (CTAF)
------------------------	--------------------------------	-------------------------------



CATEGORY	A	B	C	D	REIL Rwy 30	HIRL Rwy 12-30
CIRCLING	2660-1¼ 1411 (1500-1¼)	2660-1½ 1411 (1500-1½)	3200-3 1951 (2000-3)	3900-3 2651 (2700-3)		

NW-1, 30 NOV 2023 to 28 DEC 2023

NW-1, 30 NOV 2023 to 28 DEC 2023