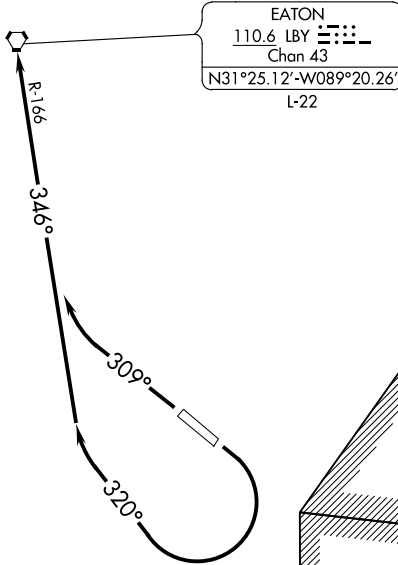


EATON TWO DEPARTURE

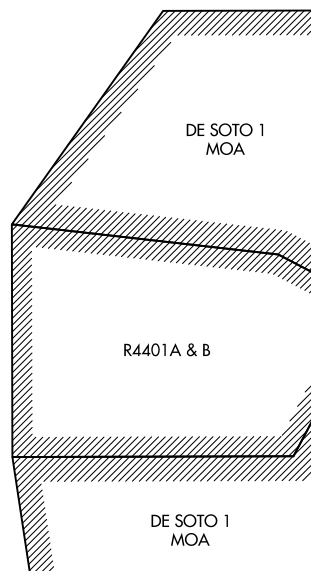
ASOS 135.425
HOUSTON CENTER
126.8 327.8
CTAF 122.8

**TOP ALTITUDE:
3000**



TAKEOFF MINIMUMS:

- Rwy 13: ATC climb of 300' per NM to 600.
- Rwy 13: Do not exceed 230K until established on heading 320°.
- Rwy 31: Standard.



SC-4, 30 NOV 2023 to 28 DEC 2023

SC-4, 30 NOV 2023 to 28 DEC 2023

NOTE: Chart not to scale.



DEPARTURE ROUTE DESCRIPTION

TAKEOFF RWY 13: Climbing right turn heading 320° and LBY VORTAC R-166 to LBY VORTAC. Thence. . .

TAKEOFF RWY 31: Climb heading 309° and LBY VORTAC R-166 to LBY VORTAC. Thence. . .

. . . maintain 3000 or ATC assigned altitude. Expect clearance to filed altitude 10 minutes after departure.

EATON TWO DEPARTURE

(LBY2.LBY) 21JUL16