


WAAS CH <b>60916</b> <b>W29A</b>	APP CRS <b>286°</b>	Rwy Idg <b>7504</b> TDZE <b>122</b> Apt Elev <b>151</b>
--	------------------------	---

# RNAV (GPS) RWY 29

GAINESVILLE RGNL (G.V.)

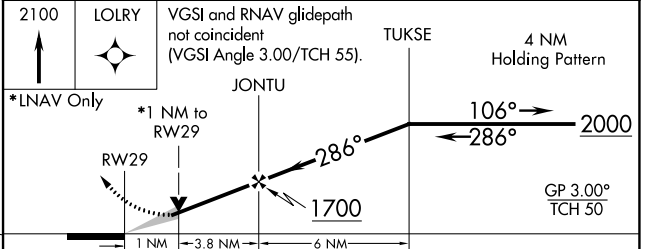
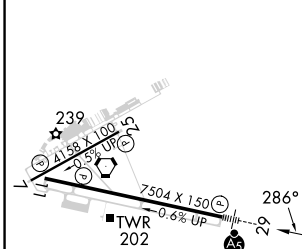
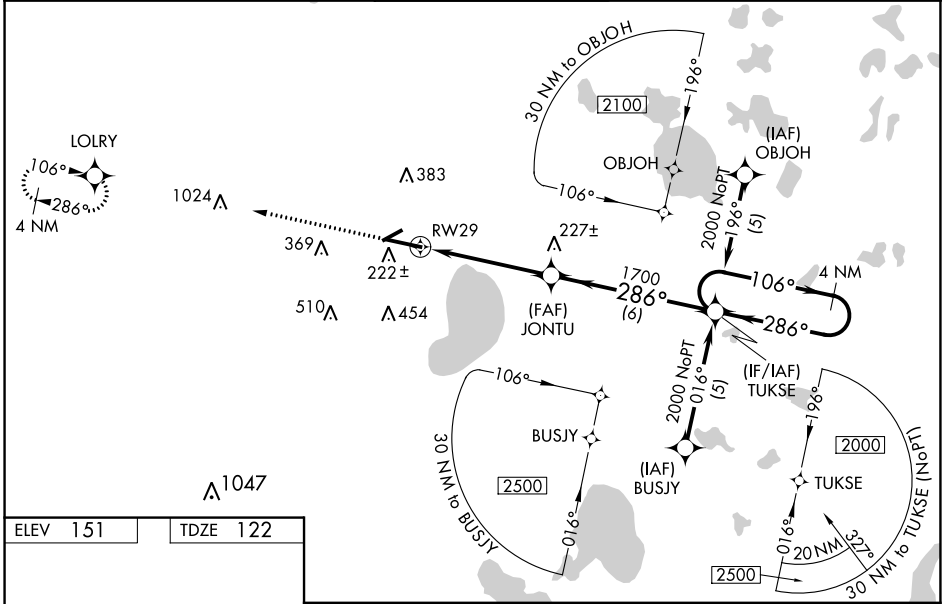
**⚠** DME/DME RNP-0.3 NA. For inoperative MALS, increase LPV all Cats visibility to RVR 5000 and increase LNAV Cat D visibility to RVR 6000. For inoperative MALS using Ocala Intl-Jim Taylor Fld altimeter setting, increase LPV all Cats visibility to 1½ mile. When local altimeter setting not received, use Ocala Intl-Jim Taylor Fld altimeter setting and increase LPV DA to 501 feet and all Cats visibility to RVR 5000; increase LNAV/VNAV DA to 561 feet and all Cats visibility to RVR 5000; increase all MDAs 100 feet and increase LNAV Cat C visibility to RVR 4000; increase Circling Cat C visibility ¼ SM and Circling Cat D ½ SM. For uncompensated Baro-VNAV systems, LNAV/VNAV NA below -15°C (5°F) or above 48°C (118°F). Baro-VNAV and VDP NA when using Ocala Intl-Jim Taylor Fld altimeter setting. When VGSI inoperative, Circling Rwy 25 NA at night.

MALS



MISSED APPROACH:  
Climb to 2100 direct LOLRY and hold.

ATIS <b>127.15</b>	JACKSONVILLE APP CON <b>118.175 338.25</b>	GAINESVILLE TOWER★ <b>119.55 (CTAF) 0 353.7</b>	GND CON <b>121.7</b>	UNICOM <b>122.95</b>
-----------------------	---	--	-------------------------	-------------------------



ELEV 151	TDZE 122			
CATEGORY	A	B	C	D
LPV DA		420/24	298 (300-½)	
LNAV/VNAV DA		480/40	358 (400-¾)	
LNAV MDA		500/24	378 (400-½)	500/50 378 (400-1)
CIRCLING	620-1 469 (500-1)	700-1 549 (600-1)	760-1¾ 609 (700-1¾)	820-2 669 (700-2)

SE-3, 30 NOV 2023 to 28 DEC 2023

SE-3, 30 NOV 2023 to 28 DEC 2023