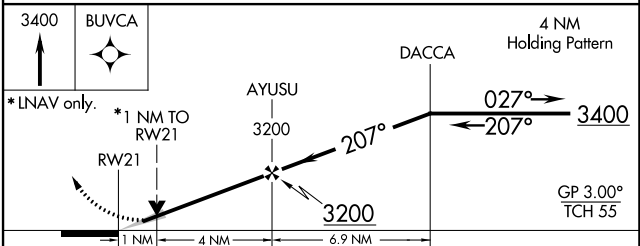
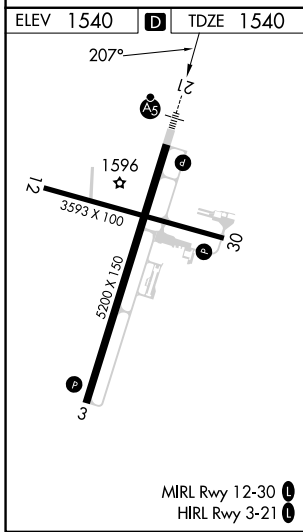
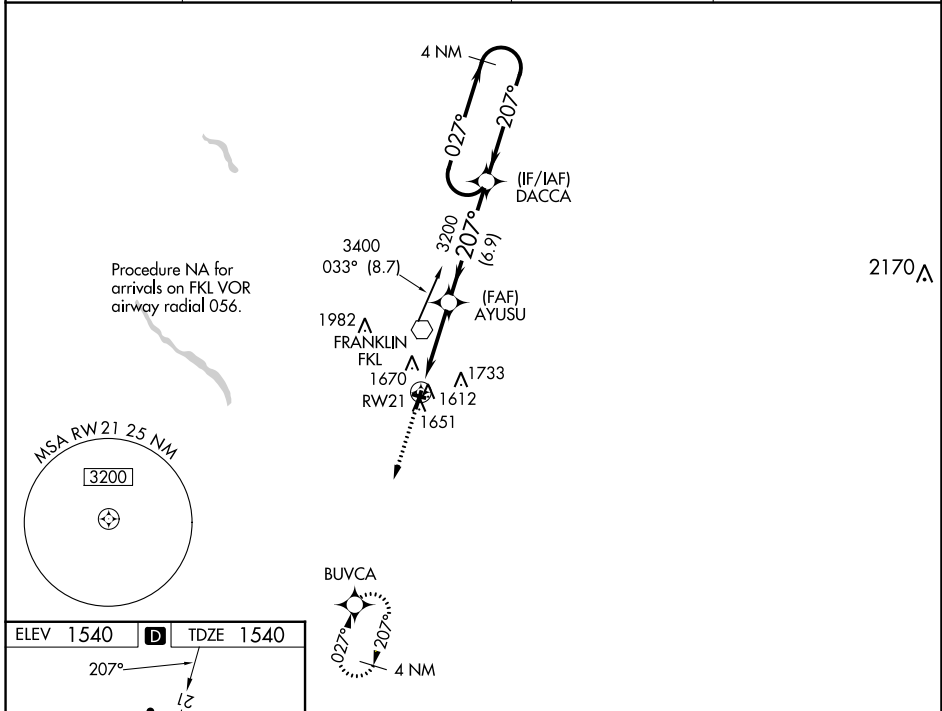


WAAS CH 77501 W21A	APP CRS 207°	Rwy Idg TDZE Apt Elev	5200 1540 1540
--	------------------------	-----------------------------	---

RNAV (GPS) RWY 21

VENANGO RGNL (F'KL)

RNP APCH.		MALSR	MISSED APPROACH: Climb to 3400 direct BUVCA and hold.
<p>⚠ For uncompensated Baro-VNAV systems, LNAV/VNAV NA below -18°C (0°F) or above 45°C (114°F). Circling Rwy 12 NA at night. For inop ALS, increase LPV all Cats visibility to 7/8 SM and LNAV Cats C/D visibility to 1 SM.</p>			
AWOS-3PT 118.175	YOUNGSTOWN APP CON * 126.25 322.3	CLNC DEL 126.25	UNICOM 122.7 (CTAF) 0



CATEGORY	A	B	C	D
LPV DA		1803-1/2	263 (300-1/2)	
LNAV/VNAV DA		1901-3/4	361 (400-3/4)	
LNAV MDA	1900-1/2	360 (400-1/2)	1900-5/8	360 (400-5/8)
CIRCLING	1960-1 1/4 420 (500-1 1/4)	2000-1 1/4 460 (500-1 1/4)	2040-1 1/2 500 (500-1 1/2)	2100-2 560 (600-2)