

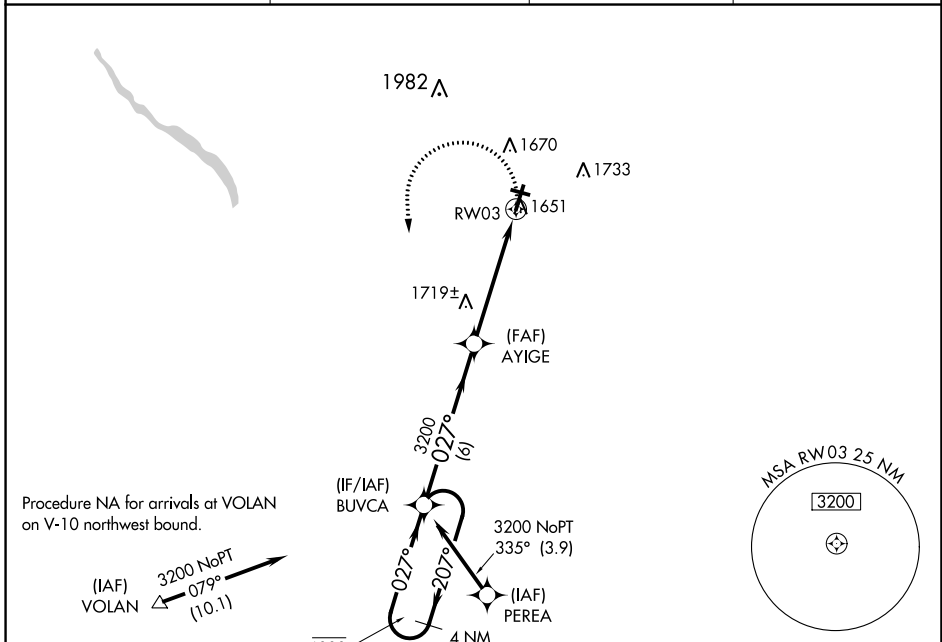
RNAV (GPS) RWY 3

VENANGO RGNL (F'KL)

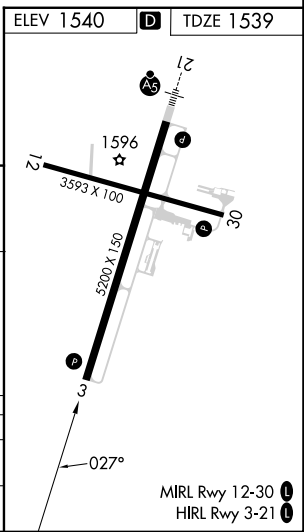
APP CRS 027°	Rwy Idg 5200
	TDZE 1539
	Apt Elev 1540

RNP APCH.	MISSED APPROACH: Climbing left turn to 3200 direct BUVCA and hold.
Rwy 3 helicopter visibility reduction below 3/4 SM NA.	
Circling Rwy 12 NA at night.	

AWOS-3PT 118.175	YOUNGSTOWN APP CON ★ 126.25 322.3	CLNC DEL 126.25	UNICOM 122.7 (CTAF)
----------------------------	---	---------------------------	-------------------------------



4 NM Holding Pattern	Visual Segment-Obstacles.			3200	BUVCA
	BUVCA	AYIGE			
$\overline{6000}$ $\overline{3200}$	$\xrightarrow{027^\circ}$	$\xrightarrow{027^\circ}$	$\xrightarrow{027^\circ}$	1.3 NM to RWY 03	RWY 03
	6 NM	3.7 NM	1.3		
CATEGORY	A	B	C	D	
LNVA MDA	1980-1	441 (500-1)	1980-1 $\frac{3}{8}$	441 (500-1 $\frac{3}{8}$)	
CIRCLING	1980-1 440 (500-1)	2000-1 460 (500-1)	2040-1 $\frac{1}{2}$ 500 (500-1 $\frac{1}{2}$)	2100-2 560 (600-2)	



NE-4, 30 NOV 2023 to 28 DEC 2023

NE-4, 30 NOV 2023 to 28 DEC 2023