

LOC/DME I-FFT <b>109.95</b>	APP CRS <b>249°</b>	Rwy Idg TDZE <b>790</b> Apt Elev <b>812</b>
Chan <b>36 (Y)</b>		

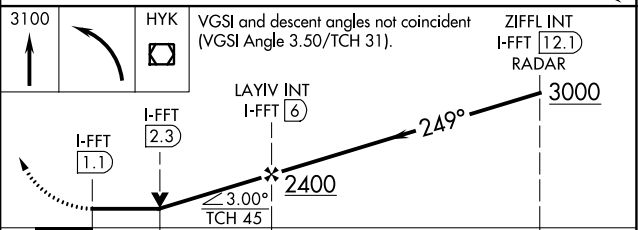
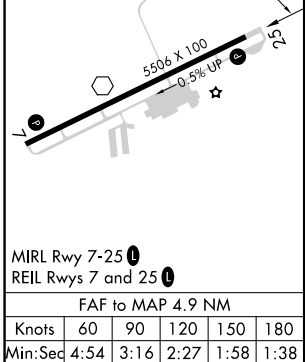
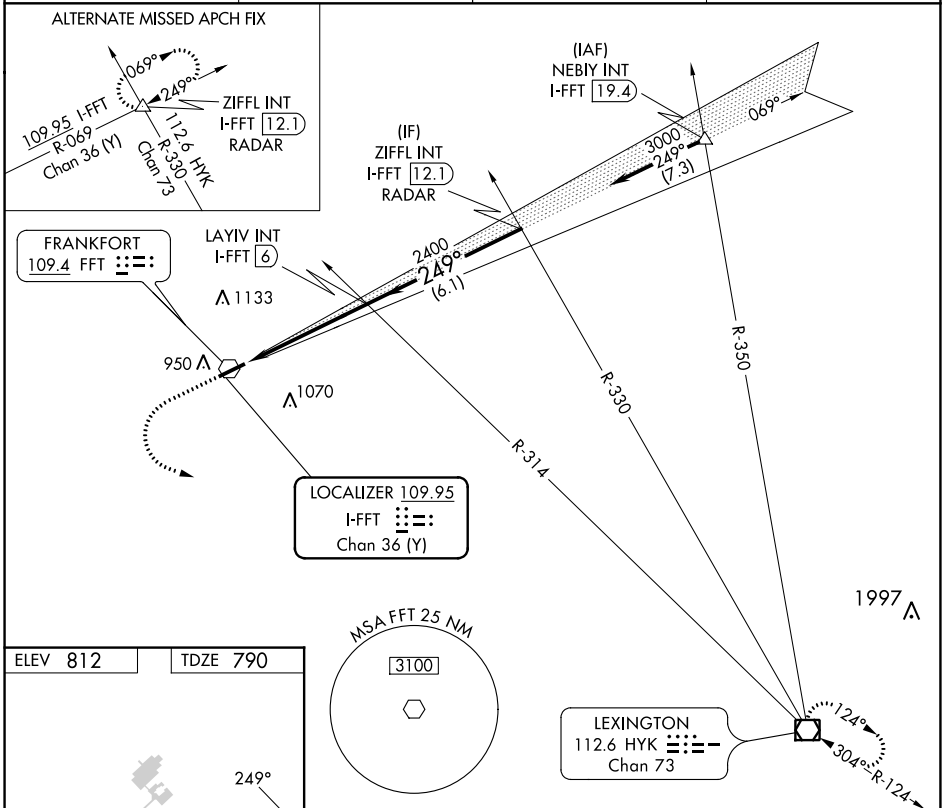
# LOC RWY 25

CAPITAL CITY (F'F'T)

**NA** Rwy 25 helicopter visibility reduction below 3/4 SM NA. When local altimeter setting not received, use Lexington altimeter setting and increase all MDA 80 feet. Increase S-25 Cats C/D visibility to 1 1/2 mile and Circling Cat C and D visibility 1/4 mile.

**MISSED APPROACH:** Climb to 3100 then left turn direct HYK VOR/DME and hold.

ASOS <b>119.275</b>	LEXINGTON APP CON <b>120.75 298.9</b>	CLNC DEL <b>118.65</b>	UNICOM <b>122.8 (CTAF)</b>
------------------------	--	---------------------------	-------------------------------



CATEGORY	A	B	C	D
S-25	1280-1	490 (500-1)	1280-1 3/8	490 (500-1 3/8)
<b>C</b> CIRCLING	1280-1 468 (500-1)	1380-1 568 (600-1)	1440-1 3/4 628 (700-1 3/4)	1440-2 628 (700-2)

SE-1, 30 NOV 2023 to 28 DEC 2023

SE-1, 30 NOV 2023 to 28 DEC 2023