

WAAS CH 56531 W25A	APP CRS 249°	Rwy Idg TDZE Apt Elev	5506 790 812
--	------------------------	-----------------------------	---

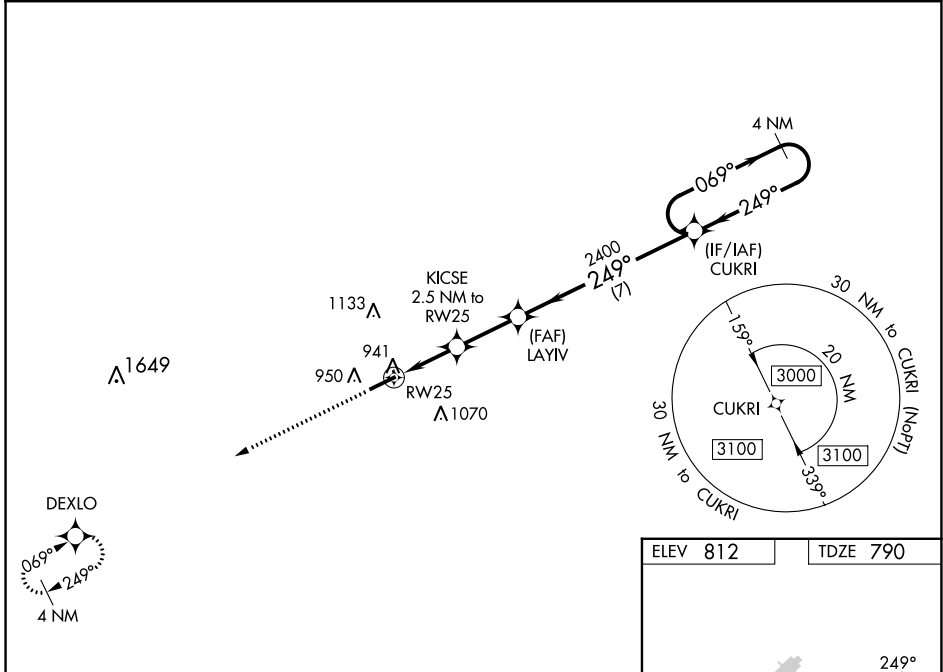
RNAV (GPS) RWY 25

CAPITAL CITY (F'T)

⚠ For uncompensated Baro-VNAV systems, LNAV/VNAV NA below -16°C (4°F) or above 54°C (130°F). DME/DME RNP-0.3 NA. When local altimeter setting not received, use Lexington altimeter setting and increase all LPV DA to 1160 feet and LNAV/VNAV DA to 1171 feet and all LPV visibilities ¼ mile, all LNAV/VNAV visibilities ⅓ mile; increase all MDAs 80 feet and visibility Cats C and D ¼ mile. VDP and Baro-VNAV NA with Lexington altimeter setting. Helicopter visibility reduction below ¾ SM NA.

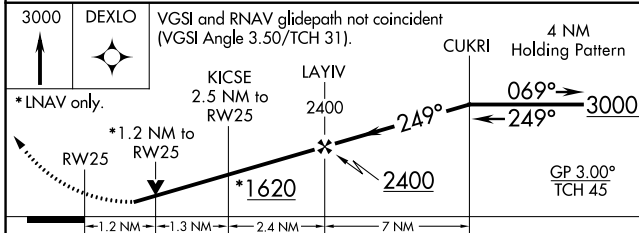
MISSED APPROACH:
Climb to 3000 direct DEXLO and hold.

ASOS 119.275	LEXINGTON APP CON 120.75 298.9	CLNC DEL 118.65	UNICOM 122.8 (CTAF) 0
------------------------	--	---------------------------	---------------------------------

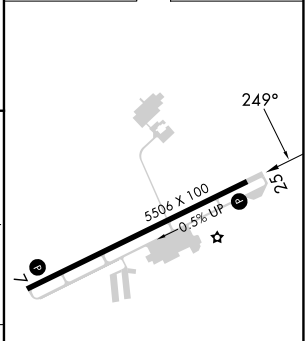


SE-1, 30 NOV 2023 to 28 DEC 2023

SE-1, 30 NOV 2023 to 28 DEC 2023



ELEV 812	TDZE 790
----------	----------



CATEGORY	A	B	C	D
LPV DA	1098-1	308 (300-1)		
LNAV/VNAV DA	1109-1½	319 (300-1½)		
LNAV MDA	1200-1	410 (400-1)	1200-1½	410 (400-1½)
CIRCLING	1280-1 468 (500-1)	1380-1 568 (600-1)	1440-1¾ 628 (700-1¾)	1440-2 628 (700-2)

MIRL Rwy 7-25 0
REIL Rws 7 and 25 0