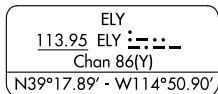


ASOS  
120.625  
SALT LAKE CENTER  
133.45 317.625  
UNICOM  
122.8

TAKEOFF MINIMUMS

- Rwy 12: Standard with minimum climb of 280' per NM to 10600, or 5100-3 for climb in visual conditions.
- Rwy 18: Standard with minimum climb of 267' per NM to 10600, or 5100-3 for climb in visual conditions.
- Rwy 30: Standard with minimum climb of 539' per NM to 10600, or 5100-3 for climb in visual conditions.
- Rwy 36: Standard with minimum climb of 238' per NM to 10600, or 5100-3 for climb in visual conditions.



TAKEOFF OBSTACLE NOTES

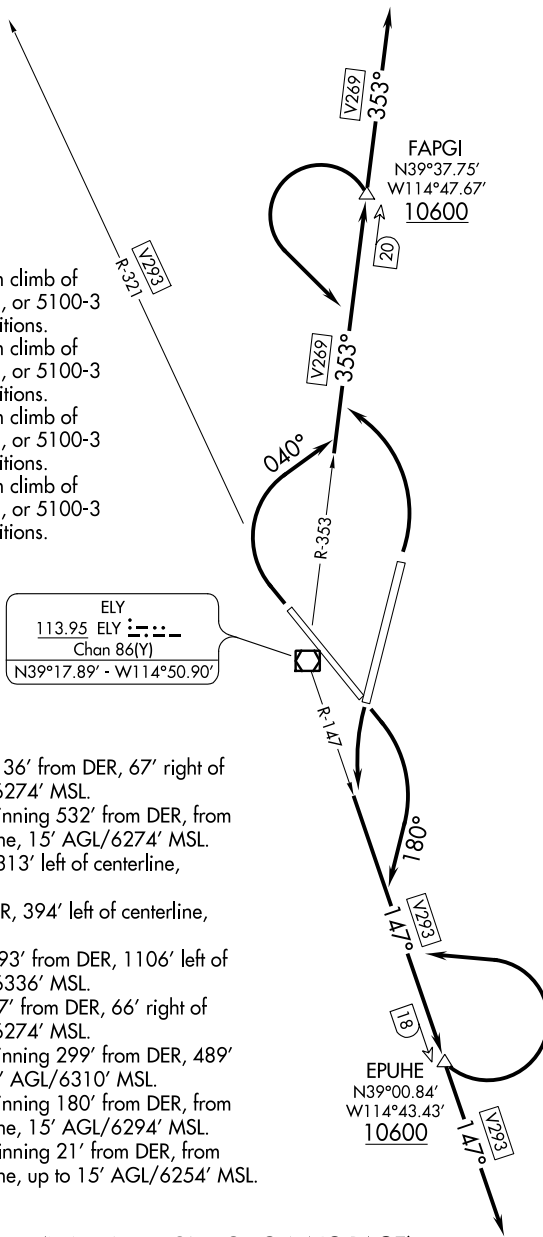
- Rwy 12: Aircraft on taxiway, 136' from DER, 67' right of centerline, 15' AGL/6274' MSL. Vehicles on road beginning 532' from DER, from left to right of centerline, 15' AGL/6274' MSL. Pole 981' from DER, 313' left of centerline, 40' AGL/6295' MSL. Tower 2617' from DER, 394' left of centerline, 64' AGL/6334' MSL. Antenna on tower 2893' from DER, 1106' left of centerline, 66' AGL/6336' MSL.
- Rwy 18: Aircraft on taxiway 17' from DER, 66' right of centerline, 15' AGL/6274' MSL. Multiple hangars beginning 299' from DER, 489' right of centerline, 35' AGL/6310' MSL. Vehicles on road beginning 180' from DER, from left to right of centerline, 15' AGL/6294' MSL.
- Rwy 30: Vehicles on road beginning 21' from DER, from left to right of centerline, up to 15' AGL/6254' MSL.

NOTE: Chart not to scale.

(NARRATIVE ON FOLLOWING PAGE)

SW-4, 30 NOV 2023 to 28 DEC 2023

SW-4, 30 NOV 2023 to 28 DEC 2023



DEPARTURE ROUTE DESCRIPTION

TAKEOFF RUNWAY 12: Climbing right turn heading 180° to intercept ELY VOR/DME R-147 to EPUHE/ELY 18 DME, cross EPUHE at or above 10600. Departures V293 southeast bound, continue climb on course to MEA. Departures V269 or V293 northbound, climbing left turn to intercept ELY VOR/DME R-147, continue climb to 12000 to ELY VOR/DME then proceed on course. Do not exceed 250K until completion of turn at EPUHE; or for climb in visual conditions, cross Ely Airport at or above 11200 before proceeding on course.

TAKEOFF RUNWAY 18: Climbing left turn to intercept ELY VOR/DME R-147 to EPUHE, cross EPUHE at or above 10600. Departures V293 southeast bound, continue climb on course to MEA. Departures V269 or V293 northbound, climbing left turn to intercept ELY VOR/DME R-147, continue climb to 12000 to ELY VOR/DME then proceed on course. Do not exceed 250K until completion of turn at EPUHE; or for climb in visual conditions, cross Ely Airport at or above 11200 before proceeding on course.

TAKEOFF RUNWAY 30: Climbing right turn heading 040° to intercept ELY VOR/DME R-353 to FAPGI/ELY 20 DME, cross FAPGI at or above 10600. Departures V269 northbound proceed on course; departures V293 northwest or southeast bound climbing left turn to intercept ELY VOR/DME R-353, continue climb to 12000 to ELY VOR/DME then proceed on course. Do not exceed 250K until completion of turn at FAPGI; or for climb in visual conditions, cross Ely Airport at or above 11200 before proceeding on course.

TAKEOFF RUNWAY 36: Climbing left turn to intercept ELY VOR/DME R-353 to FAPGI, cross FAPGI at or above 10600. Departures V269 northbound proceed on course; departures V293 northwest or southeast bound climbing left turn to intercept ELY VOR/DME R-353, continue climb to 12000 to ELY VOR/DME then proceed on course. Do not exceed 250K until completion of turn at FAPGI; or for climb in visual conditions, cross Ely Airport at or above 11200 before proceeding on course.

SW-4, 30 NOV 2023 to 28 DEC 2023

SW-4, 30 NOV 2023 to 28 DEC 2023