

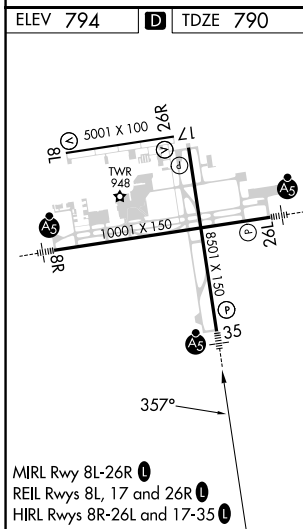
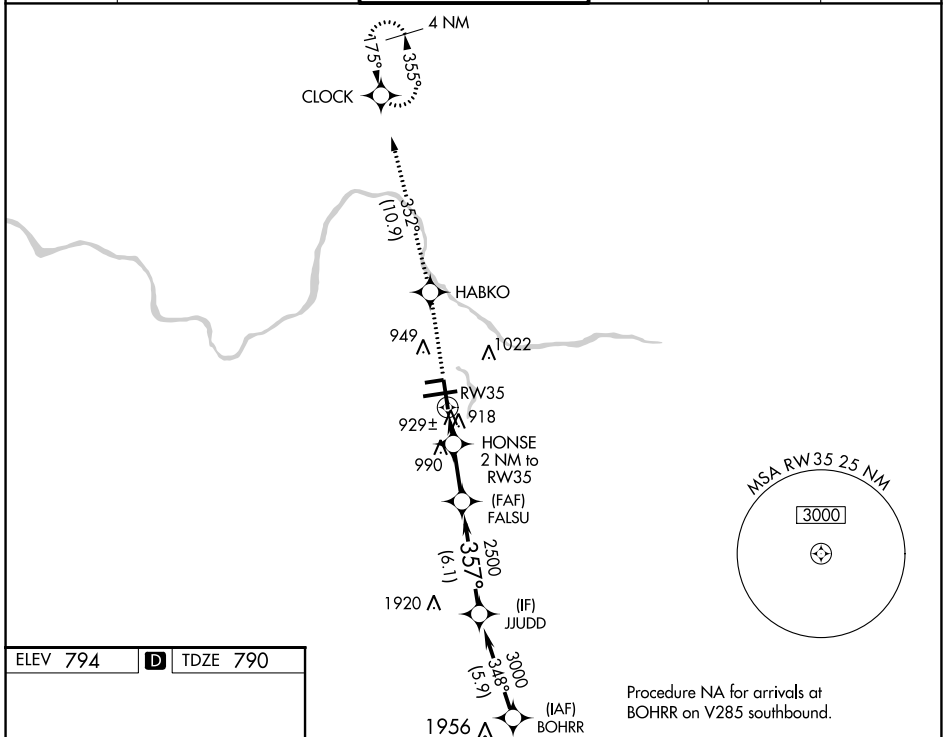
WAAS CH <b>87112</b> <b>W35A</b>	APP CRS <b>357°</b>	Rwy Idg <b>8501</b> TDZE <b>790</b> Apt Elev <b>794</b>
--	------------------------	---

# RNAV (GPS) RWY 35

GERALD R FORD INTL (G.R.R.)

RNP APCH. ▼ For uncompensated Baro-VNAV systems, LNAV/VNAV NA below -16°C or above 54°C. For inop ALS, increase LNAV Cat D visibility to RVR 6000. ** RVR 1800 authorized with use of FD or AP or HUD to DA.	MALSR AS	MISSED APPROACH: Climb to 3000 direct HABKO and track 352° to CLOCK and hold.
---	-------------	---

ATIS <b>118.725</b>	GREAT LAKES APP CON * <b>128.4 257.6</b>	GRAND RAPIDS TOWER * <b>135.65 (CTAF) 0 339.8</b>	GND CON <b>121.8</b>	CLNC DEL <b>119.3</b>	UNICOM <b>122.95</b>
------------------------	---	--	-------------------------	--------------------------	-------------------------



ELEV 794	D	TDZE 790		
3000	HABKO	CLOCK	Procedure NA for arrivals at BOHRR on V285 southbound.	
↑	tr 352°	↑	VGSI and RNAV glidepath not coincident (VGSI Angle 3.00/TCH 74).	
* LNAV only.	HONSE 2 NM to RW35	FALSU 2500	JJUDD 3000	
	* 1 NM to RW35	* 1480	GP 3.00° TCH 55	
	1 NM	3.1 NM	6.1 NM	
CATEGORY	A	B	C	D
LPV DA**	990/24 200 (200-½)			
LNAV/VNAV DA	1236/50 446 (500-1)			
LNAV MDA	1180/24	390 (400-½)	1180/35	1180/50
			390 (400-¾)	390 (400-1)
CIRCLING	1260-1	466 (500-1)	1340-1½	1360-2
			546 (600-1½)	566 (600-2)

EC-1, 30 NOV 2023 to 28 DEC 2023

EC-1, 30 NOV 2023 to 28 DEC 2023