

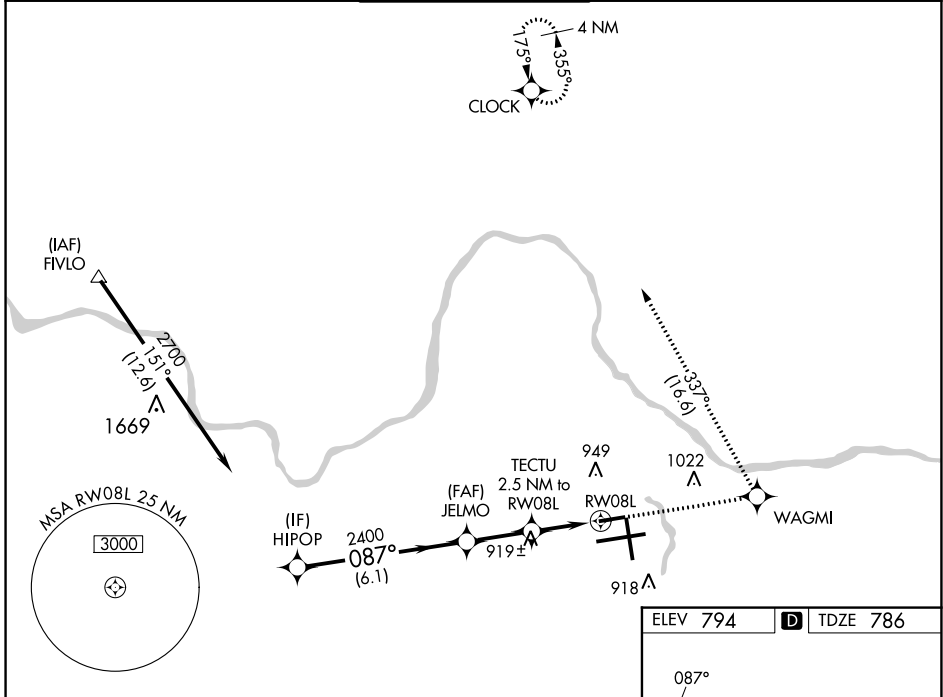
WAAS CH 40213 W08A	APP CRS 087°	Rwy Idg TDZE Apt Elev	5001 786 794
--	------------------------	-----------------------------	---

RNAV (GPS) RWY 8L

GERALD R FORD INTL (G.R.)

RNP APCH.		MISSED APPROACH: Climb to 3000 direct WAGMI and left turn on track 337° to CLOCK and hold.		
<p>T Rwy 8L helicopter visibility reduction below ¾ SM NA. A For uncompensated Baro-VNAV systems, LNAV/VNAV NA below -16°C or above 54°C.</p>				

ATIS 118.725	GREAT LAKES APP CON * 128.4 257.6	GRAND RAPIDS TOWER * 135.65 (CTAF) 0 339.8	GND CON 121.8	CLNC DEL 119.3	UNICOM 122.95
------------------------	---	--	-------------------------	--------------------------	-------------------------



EC-1, 30 NOV 2023 to 28 DEC 2023

EC-1, 30 NOV 2023 to 28 DEC 2023

ELEV 794		D TDZE 786	
<p>HIPOP 2700</p> <p>JELMO 2400</p> <p>TECTU 2.5 NM to RW08L</p> <p>WAGMI 3000</p> <p>CLOCK</p> <p>GP 3.00° TCH 45</p> <p>087°</p> <p>2400</p> <p>*1620</p> <p>*1.1 NM to RW08L</p> <p>RW08L</p> <p>tr 337°</p> <p>*LNAV only.</p>			
6.1 NM		2.4 NM	
1.4 NM		1.1 NM	
CATEGORY	A	B	C
LPV DA	1036-1 250 (300-1)		
LNAV/VNAV DA	1203-1½ 417 (500-1½)		
LNAV MDA	1180-1 394 (400-1)	1180-1¼ 394 (400-1½)	1180-1¼ 394 (400-1¼)
C CIRCLING	1260-1 466 (500-1)	1340-1½ 546 (600-1½)	1360-2 566 (600-2)

MIRL Rwy 8L-26R **I**
 REIL Rws 8L, 17 and 26R **I**
 HIRL Rws 8R-26L and 17-35 **I**