

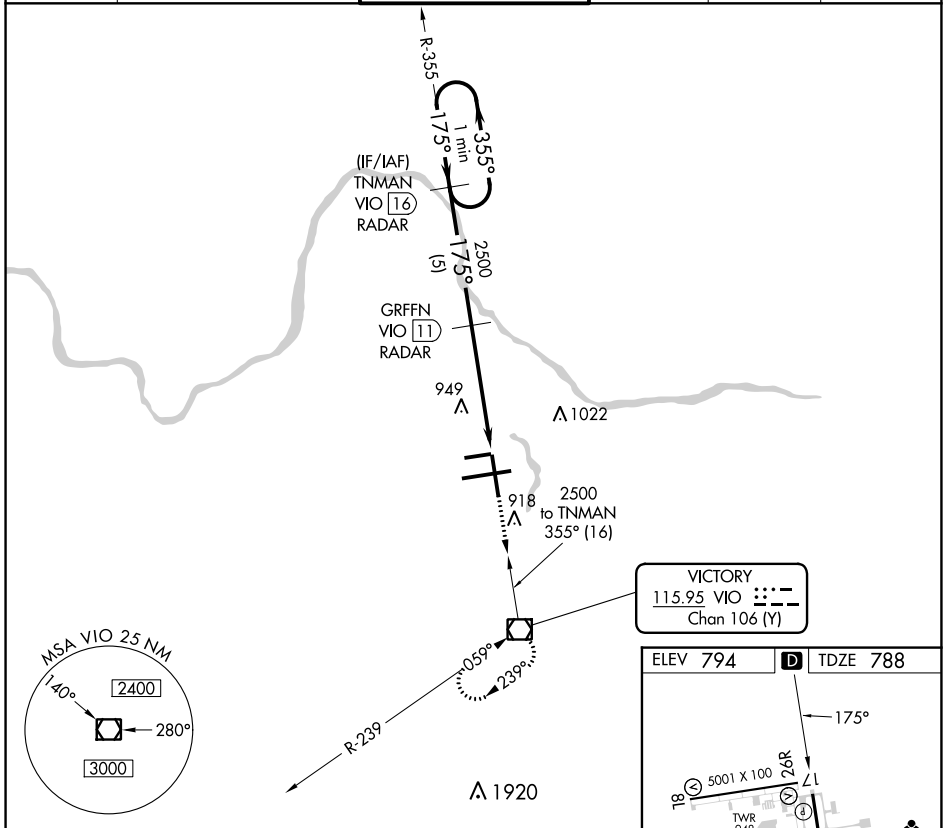
VOR/DME VIO	APP CRS	Rwy Idg	<b>8501</b>
<b>115.95</b>	<b>175°</b>	TDZE	<b>788</b>
Chan <b>106 (Y)</b>		Apt Elev	<b>794</b>

# VOR RWY 17

GERALD R FORD INTL (G.R.)

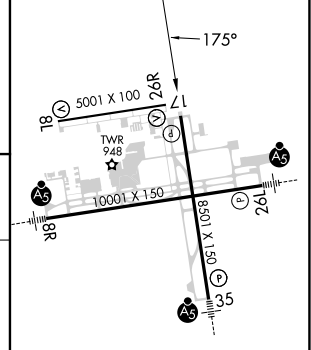
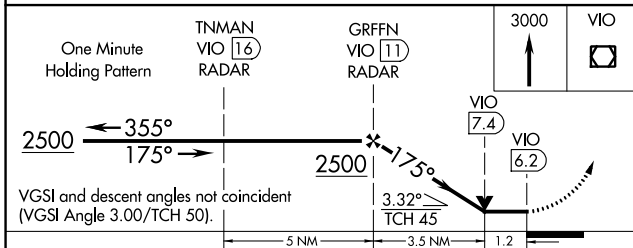
DME or RADAR required.		MISSED APPROACH: Climb to 3000 direct VIO VOR/DME and hold.		
<p><b>⚠</b> When local altimeter setting not received, use Holland altimeter setting and increase all MDAs 80 feet and increase S-17 Cat D visibility ¼ SM. Rwy 17 helicopter visibility reduction below ¼ SM NA.</p>				

ATIS <b>118.725</b>	GREAT LAKES APP CON * <b>128.4 257.6</b>	GRAND RAPIDS TOWER * <b>135.65 (CTAF) 0 339.8</b>	GND CON <b>121.8</b>	CLNC DEL <b>119.3</b>	UNICOM <b>122.95</b>
------------------------	---	--	-------------------------	--------------------------	-------------------------



**VICTORY**  
115.95 VIO ---  
Chan 106 (Y)

ELEV 794	<b>D</b> TDZE 788
----------	-------------------



MIRL Rwy 8L-26R  
REIL Rws 8L, 26R and 17  
HIRL Rws 8R-26L and 17-35

CATEGORY	A	B	C	D
S-17	1200-1	412 (500-1)	1200-1¼	412 (500-1¼)
<b>C</b> CIRCLING	1280-1	486 (500-1)	1340-1½	1360-2 566 (600-2)

FAF to MAP 4.7 NM					
Knots	60	90	120	150	180
Min:Sec	4:42	3:08	2:21	1:53	1:34

EC-1, 30 NOV 2023 to 28 DEC 2023

EC-1, 30 NOV 2023 to 28 DEC 2023