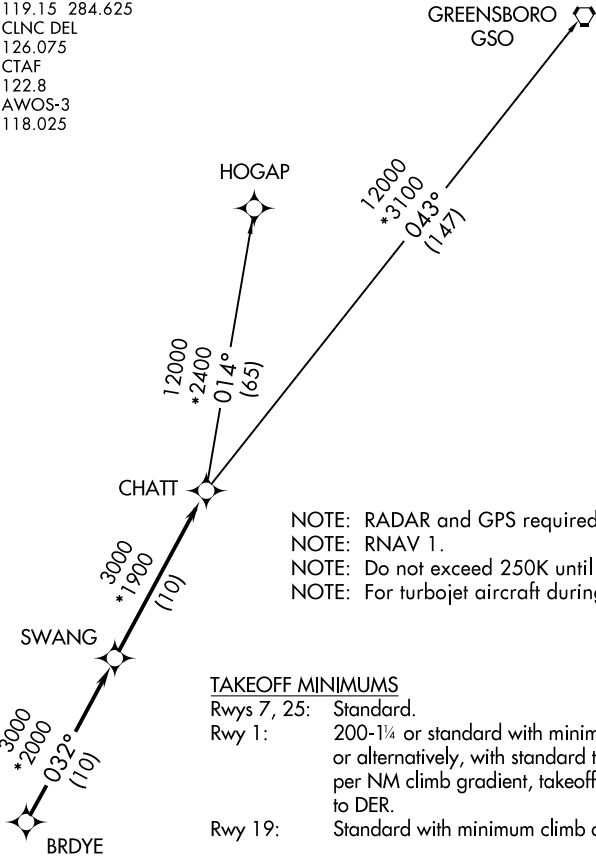


AUGUSTA DEP CON ★  
119.15 284.625  
CLNC DEL  
126.075  
CTAF  
122.8  
AWOS-3  
118.025

TOP ALTITUDE:  
ASSIGNED BY ATC



NOTE: RADAR and GPS required.  
NOTE: RNAV 1.  
NOTE: Do not exceed 250K until advised by ATC.  
NOTE: For turbojet aircraft during Masters golf tournament week.

TAKEOFF MINIMUMS

Rwys 7, 25: Standard.  
Rwy 1: 200-1¼ or standard with minimum climb of 220' per NM to 800, or alternatively, with standard takeoff minimums and a normal 200' per NM climb gradient, takeoff must occur no later than 1400' prior to DER.  
Rwy 19: Standard with minimum climb of 201' per NM to 1300'.

NOTE: Chart not to scale.

**DEPARTURE ROUTE DESCRIPTION**  
TAKEOFF RUNWAY 1, 7, 19, 25: Climb on assigned heading for RADAR vectors to BRDYE, then on depicted route to CHATT, thence . . .  
. . . maintain altitude assigned by ATC. Expect clearance to filed altitude/flight level within 10 minutes after departure.  
GREENSBORO TRANSITION (CHATT6.GSO)  
HOGAP TRANSITION (CHATT6.HOGAP)

SE-2, 30 NOV 2023 to 28 DEC 2023

SE-2, 30 NOV 2023 to 28 DEC 2023